

# RIVER BOAT

## ADJUSTMENT SHEET

TO MAKE GAME MORE CONSERVATIVE --- MOVE POSTS 3/16", AS SHOWN IN SKETCH. SPOTTING HOLES ARE PROVIDED AND CAN BE SEEN ON REMOVAL OF POSTS.

### NO. MATCH ON-OFF JACK,

located in back box. When plug is in 'ON' position, number match will pay 10% or 1 game in 10 for one player matching last number in point score to number that appears on back glass when game is over. In 'OFF' position, match lites will not lite on completion of game.

### 25¢ ADJUSTMENT JACK,

located on panel, will provide for -2 -3-4 or -5 plays for 25¢. Insert phone tip in female jack opposite number of plays required.

### 3-5 BALL ADJUSTMENT JACK,

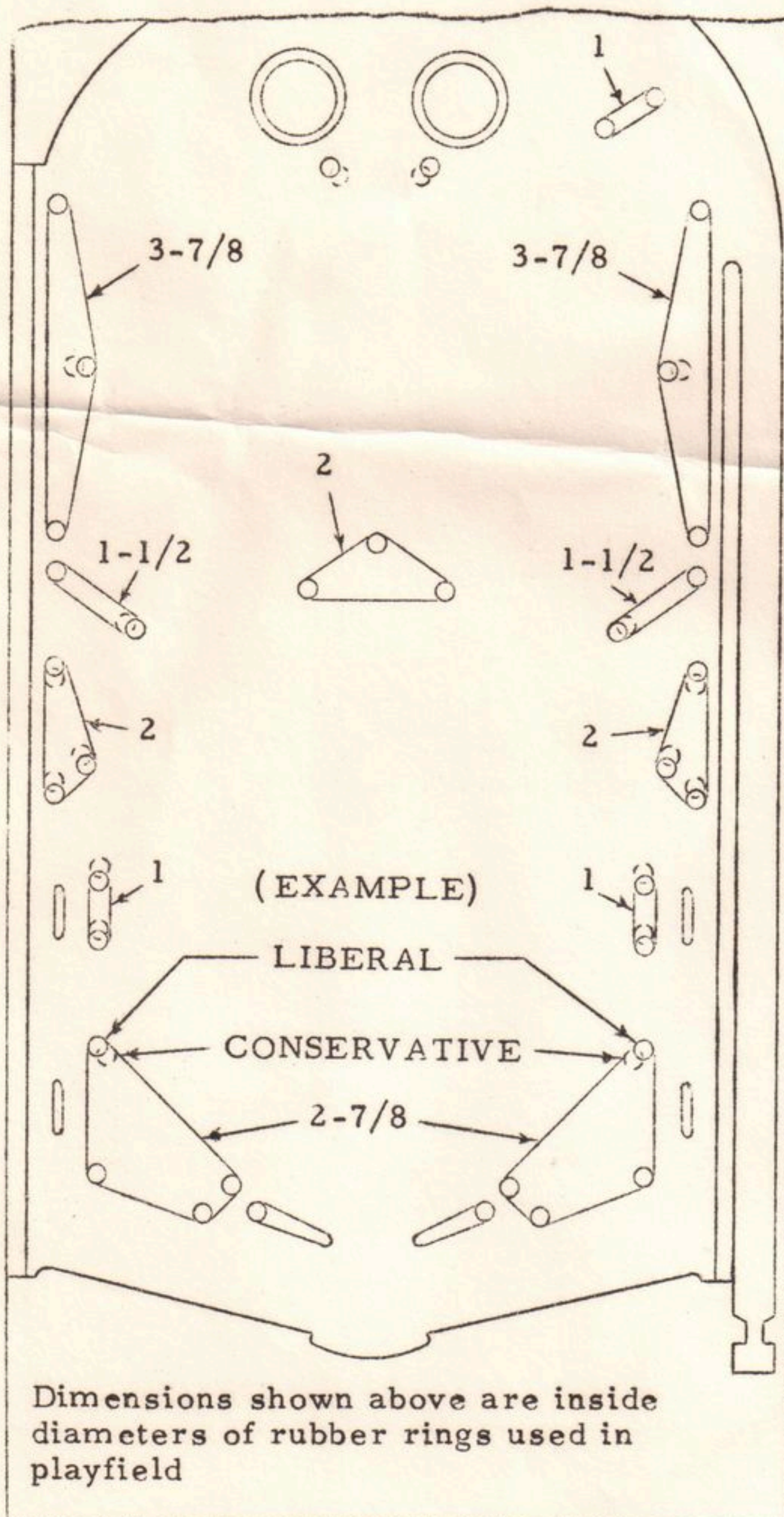
located in back box. For 3 ball play, insert plug in 3 ball position and make sure only 3 balls are in game.

### THE POWER TRANSFORMER,

located on panel, is equipped with a secondary tap. If your game is on location with extremely low line voltage, remove lead from lug marked 24 V. and solder to alternate lug marked 'HIGH'. This will boost secondary voltage by approximately 4 volts.

### LEG LEVELERS,

are provided for two purposes - 1st to level game on location - 2nd to increase pitch for game percentaging. If it is desired to speed up play or decrease score, raise rear leg levelers to increase pitch.



Dimensions shown above are inside diameters of rubber rings used in playfield

○ Indicates Liberal Position

○ Indicates Conservative Position

RIVER BOAT COIL CHART

NOTICE:

THIS GAME OPERATES ON 24 VOLTS. WHEN ORDERING REPLACEMENT TRANSFORMERS, MOTORS, COILS OR METERS --- MAKE SURE TO SPECIFY CORRECT PART NUMBERS.

NUMBER	DESCRIPTION	LOCATION
14 A 7745	TARGET MOTOR	PLAYFIELD
14 A 7754	SCORE MOTOR - 60 CYCLE	MECH. PANEL
14 A 7756	SCORE MOTOR - 50 CYCLE	MECH. PANEL
15 A 6771	TRANSFORMER - 60 CYCLE	MECH. PANEL
15 A 6773	TRANSFORMER - 50 CYCLE	MECH. PANEL
20 A 8796	24 VOLT METER	MECH. PANEL
<u>SOLENOID COILS</u>		
A 23-600	REPLAY UNIT STEP UP	INSERT
A 23-650	ADVANCE UNIT STEP UP MATCH UNIT STEP UP	PLAYFIELD INSERT
A2-23-750	LARGE BELL KNOCKER COIL	CABINET CABINET
A 26-1350	BALL RELEASE COIL	BALL TROUGH
B 26-800	REPLAY UNIT RESET SCORE DRUM UNIT COILS ( 4 REQ'D.)	INSERT INSERT
D 24-1150	BANK RESET COIL	PLAYFIELD
FL 21-375/ 28-400	FLIPPER COILS ( 2 REQ'D.)	PLAYFIELD
G 22-550	JET BUMPER COILS ( 5 REQ'D.)	PLAYFIELD
G 23-750	AUTOMATIC KICKER COILS ( 2 REQ'D.)	PLAYFIELD
<u>RELAY COILS</u>		
M 29-1100	NO. 1 BUMPER RELAY NO. 2 BUMPER RELAY 1 PT. RELAY 10 PT. RELAY 100 PT. RELAY SCORE RESET RELAY ADVANCE RELAY NO. 3 BUMPER RELAY	PLAYFIELD PLAYFIELD INSERT INSERT INSERT INSERT PLAYFIELD PLAYFIELD
M 36-5500	25¢ RELAY REPLAY RELAY	MECH. PANEL MECH. PANEL
Z 27-1000	RESET RELAY CENTER TARGET RELAY TARGET RELAY	MECH. PANEL MECH. PANEL MECH. PANEL
Z 28-1200	ON YELLOW BUMPER RELAY ON GREEN BUMPER RELAY LOCK RELAY NO. 1 JOKER RELAY NO. 2 JOKER RELAY NO. 3 JOKER RELAY	PLAYFIELD PLAYFIELD MECH. PANEL MECH. PANEL MECH. PANEL MECH. PANEL
Z 35-4200	COIN RELAY	MECH. PANEL
<u>RELAY BANK COILS</u>		
X 27-500	RELAY BANK COIL (1 REQ'D.)	PLAYFIELD
X 27-700	RELAY BANK COIL ( 12 REQ'D.)	PLAYFIELD

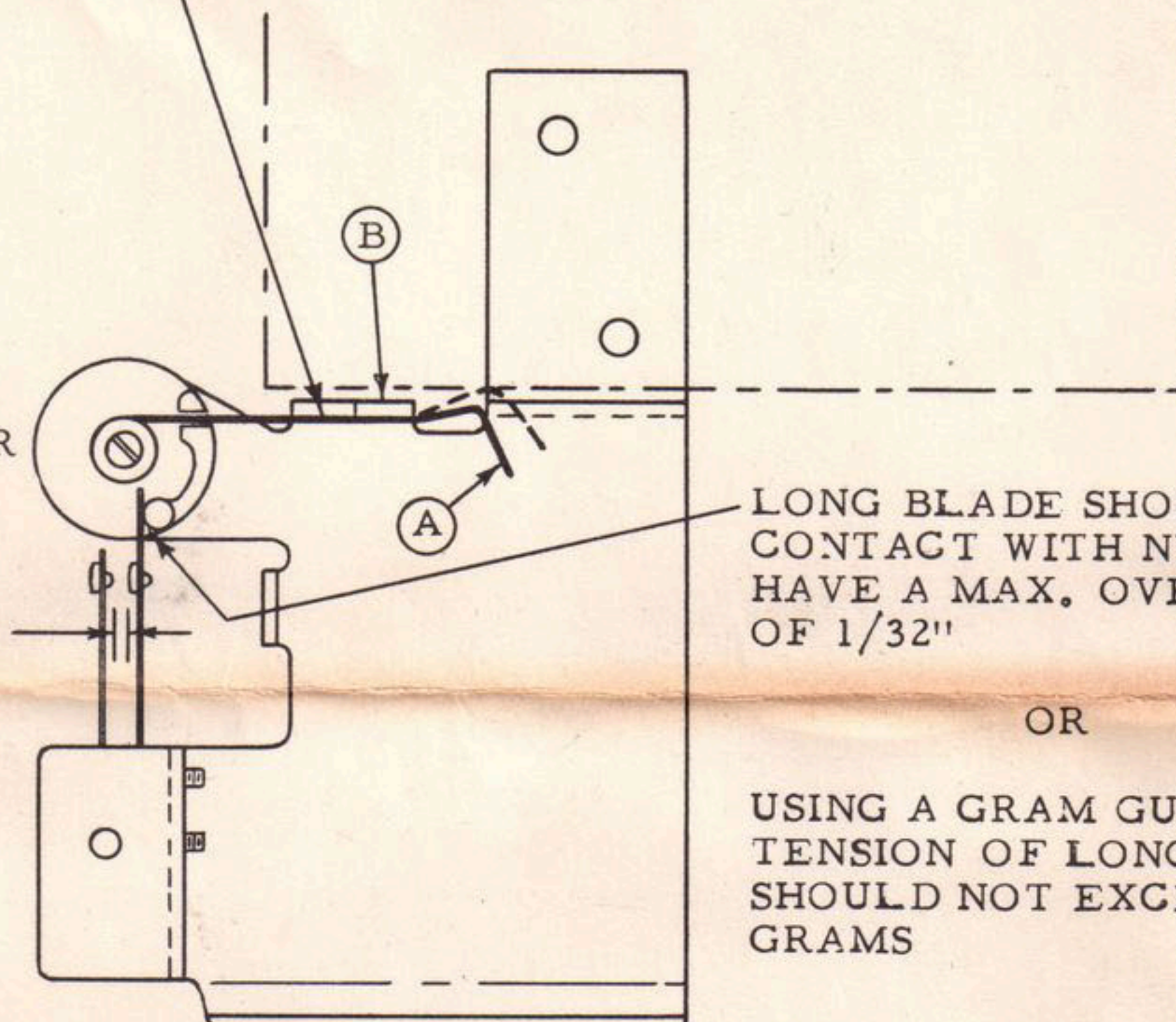
## COIN TRIP SWITCH ADJUSTMENT

WIRE (A) SHOULD BE IN CONTACT WITH BRACKET (B) WHEN BLADE ADJUSTMENT IS MADE

"GAP" FOR 10¢ COIN OR ANY COIN SMALLER IN SIZE SHOULD BE .030 TO .045

"GAP"

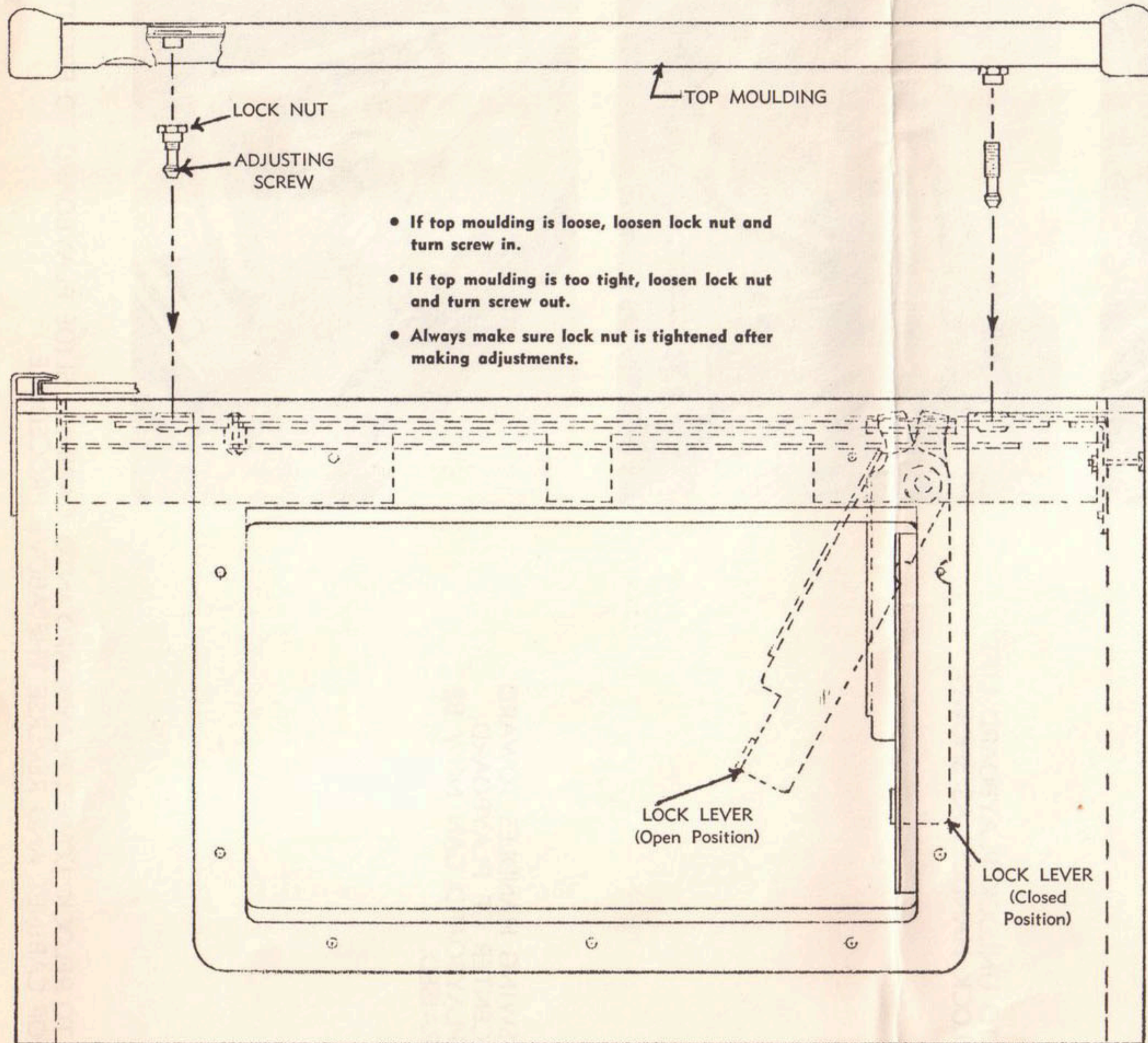
"GAP" FOR 5¢ OR 25¢ COIN OR ANY COIN LARGER THAN 10¢ SHOULD BE .045 TO .060



### ADJUSTMENT INSTRUCTIONS:

- 1) ADJUST LONG BLADE TO A POSITION JUST TOUCHING THE NYLON (SWITCH ACTUATOR). THIS CAUSES THE TRIP WIRE (A) TO BE ALL THE WAY UP TOUCHING THE STOP BRACKET (B).
- 2) ADJUST THE SHORT BLADE SO THAT THE GAP BETWEEN THE SILVER CONTACTS IS .030 TO .060 AS REQUIRED BY THE COIN USED.
- 3) DO NOT ADJUST GAP CLOSER THAN .030 UNDER ANY CIRCUMSTANCES.
- 4) WHEN USING EXTREMELY SMALL COINS SUCH AS NETHERLANDS 10¢ OR VENEZUELA 25 CENTIMOS, IT MAY BE NECESSARY TO BEND THE WIRE 'A' UPWARDS SO AS TO MAKE CONTACT WITH THE BOTTOM OF THE SLUG REJECTOR (SHOWN IN DOTTED LINES). THIS GIVES THE COIN A LONGER CONTACT WITH THE SWITCH WIRE 'A' AS IT FALLS THRU.

# FRONT MOULDING LOCK



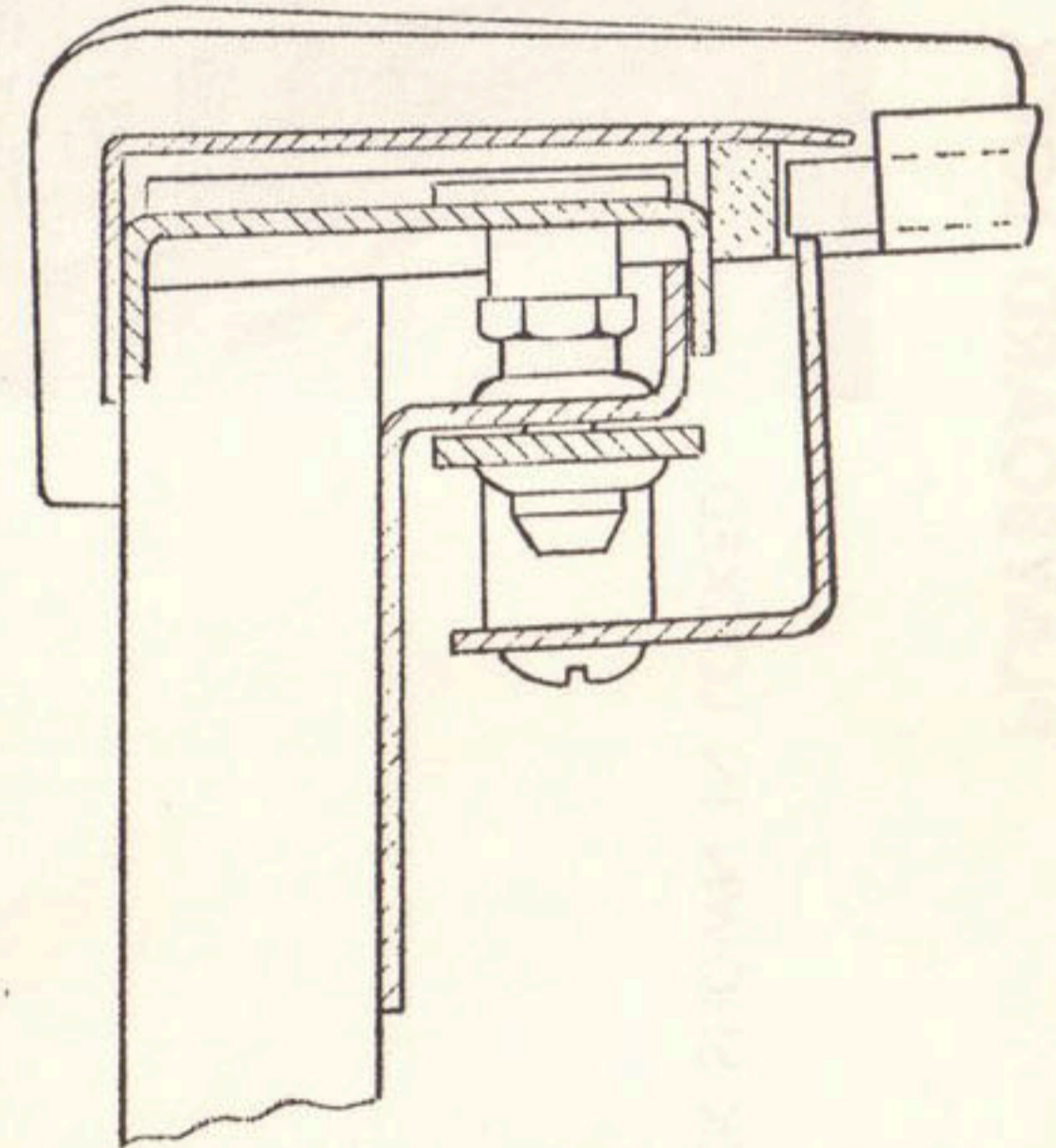
- If top moulding is loose, loosen lock nut and turn screw in.
- If top moulding is too tight, loosen lock nut and turn screw out.
- Always make sure lock nut is tightened after making adjustments.

## INSTRUCTIONS TO REMOVE TOP MOULDING

- Open front door of cabinet and pull lock lever to open position.
- Grasp ends and lift top moulding from cabinet.

## TO REPLACE TOP MOULDING

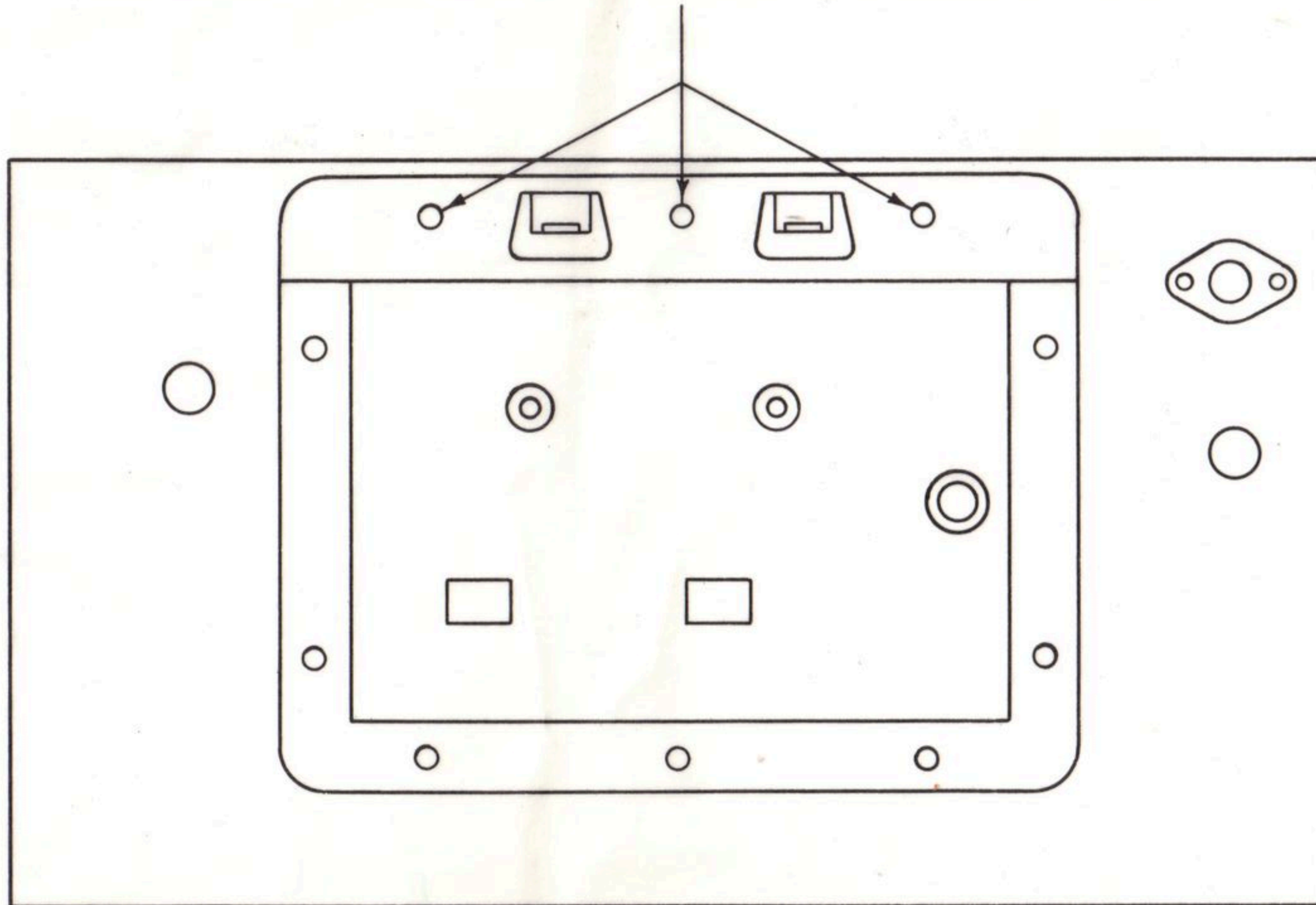
- Make certain lock lever is in open position.
- Align screws with corresponding holes.  
**DO NOT FORCE LOCK LEVER**
- Make sure that top moulding is fully seated before attempting to lock.



CROSS SECTION VIEW SHOWING TOP MOULDING IN SEATED POSITION.

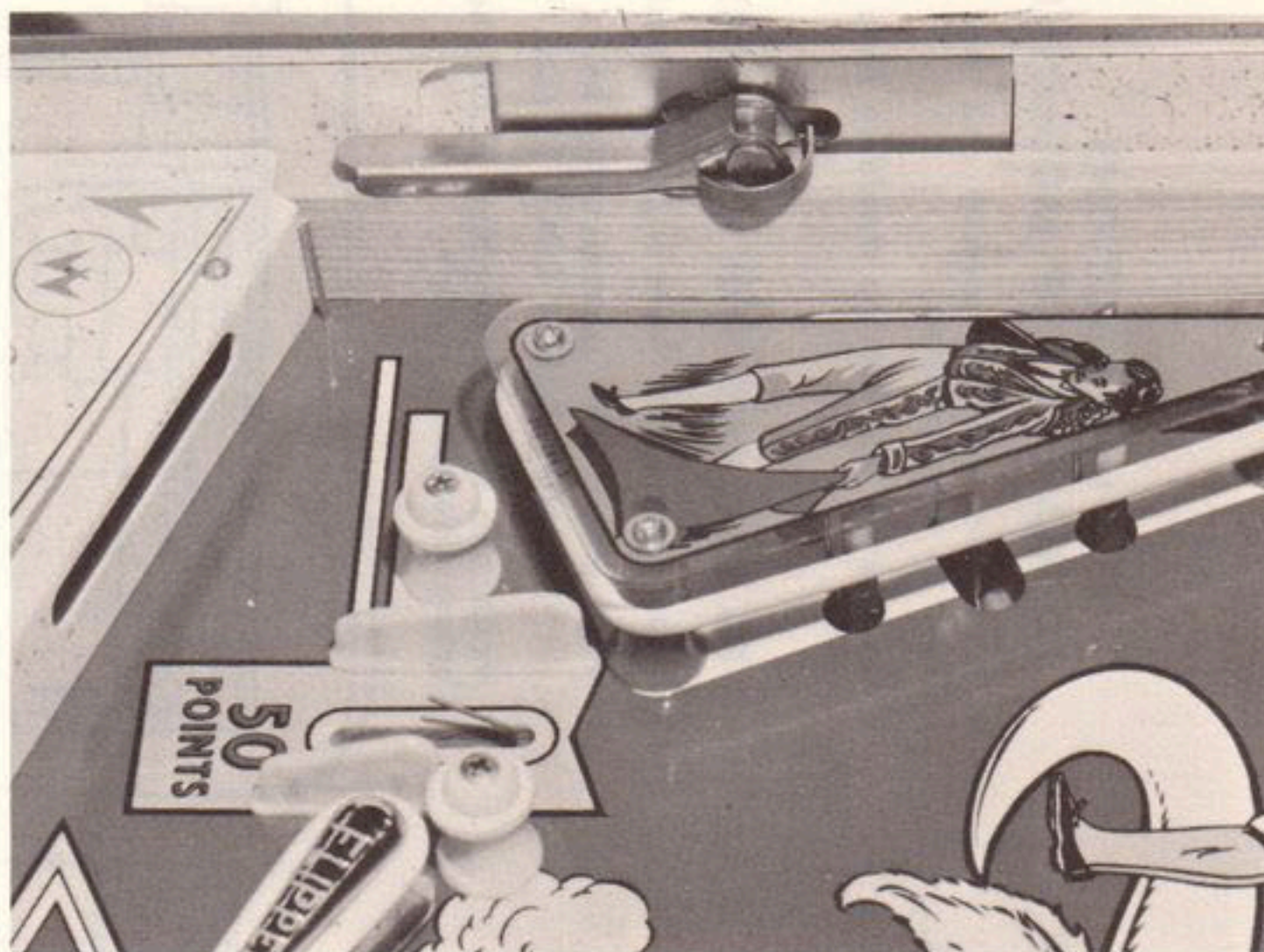
## TO CHANGE COIN INTAKE PLATE

REMOVE ONLY THE TOP SECTION  
OF DOOR FRAME HELD BY (3) CARRIAGE BOLTS.

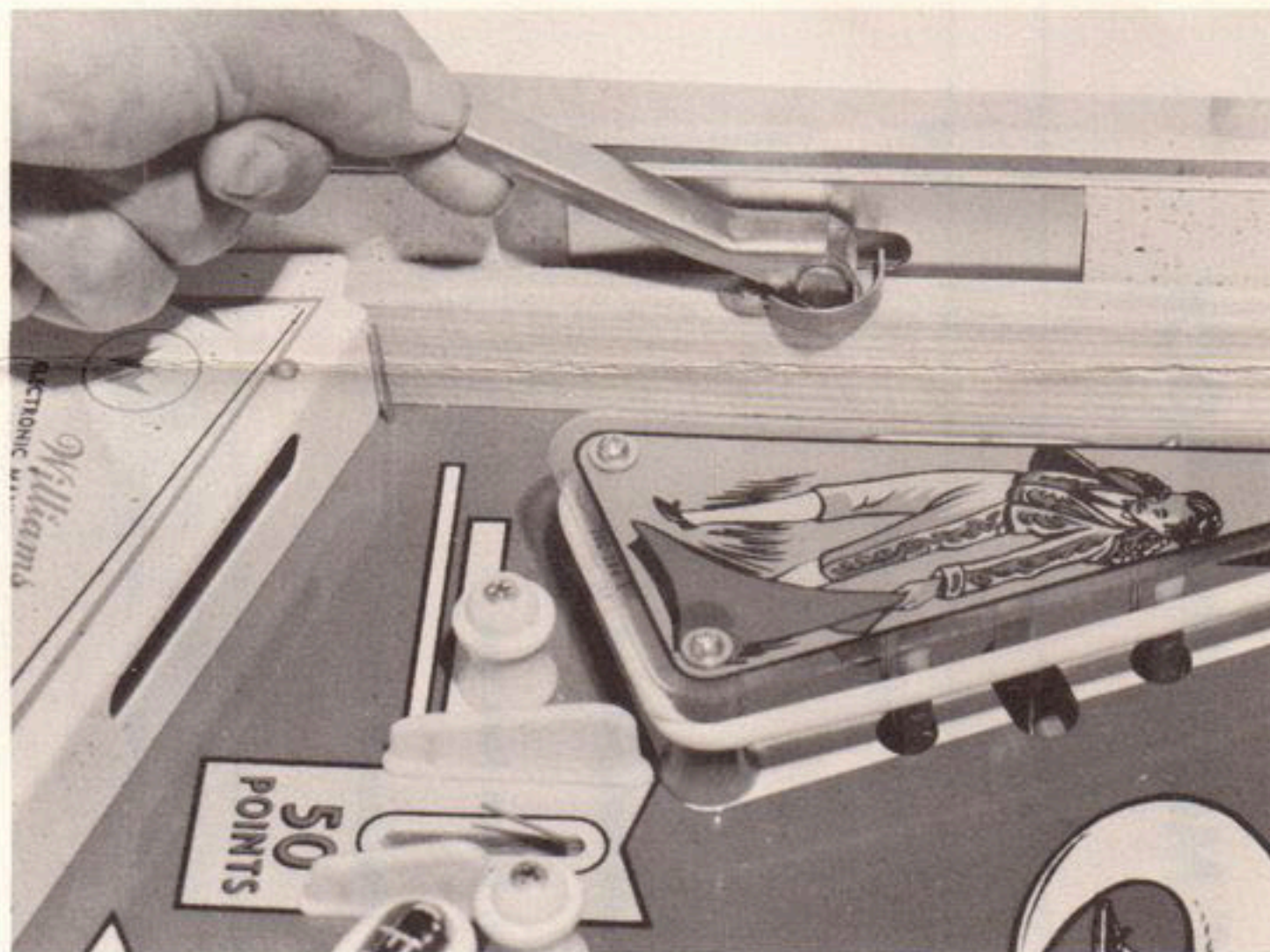


# PLAYBOARD LOCK

1. PLAYBOARD LOCK SHOWN IN LOCKED POSITION



2. TO UNLOCK PLAYBOARD LIFT LOCK HANDLES AS SHOWN



3. SWING HANDLES TOWARD CENTER OF PLAYBOARD. PLAYBOARD CAN NOW BE RAISED.



4. TO RELOCK, LOWER PLAYBOARD INTO CABINET. SLIDE PLAYBOARD TO FRONT OF CABINET AND REVERSE THE ABOVE PROCEDURE.

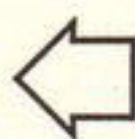
TEAR OFF THE ATTACHED CARD

and  
SEND IT IN.

**YOUR SUGGESTION MEANS ACTION BY WILLIAMS**

Because you mailed in your card on previous games the following improvements resulted. In this game you will find:

**CHECK THESE IMPROVEMENTS !**



- New Coils - 24 Volt
- New Relays
- New 1 Piece Flipper and Shaft
- Front Moulding Latch
- Playfield Latch
- New Coin Switch
- New Drum Type Scoring Units
- New Motor Unit

**KEEP YOUR SUGGESTIONS COMING.**

THANKS

**WILLIAMS ELECTRONIC MFG. CORP.**

SALTZMAN PRINTERS, INC. • CHICAGO 39

## Warranty FOR WILLIAMS PRODUCTS

"This product is warranted to be free from defective material or parts, and it is agreed to furnish a new part in exchange for any part of this unit which under normal installation, use and service discloses such defect, provided the unit is delivered by the owner to the authorized Williams distributor from whom purchased, intact, for examination with all transportation charges prepaid, within 90 days from the date of sale to original purchaser and provided that such examination discloses that it is thus defective.

This warranty does not extend to parts which have been subjected to misuse, neglect, accident, incorrect wiring not our own, improper installation, or to use in violation of instructions furnished by us, nor extend to units which have been repaired or altered outside of our authorized facilities, nor to cases where the serial number thereof has been removed, defaced or changed, nor to accessories used therewith not of our own manufacture.

This warranty is in lieu of other warranties expressed or implied and no representative or person is authorized to assume for us any other liability in connection with the sale of our Williams Products.

**WILLIAMS ELECTRONIC MFG. CORP.**

4242 W. FILLMORE STREET

CHICAGO 24, ILLINOIS

### FOR WARRANTY FOR WILLIAMS PRODUCTS

The coupon must be filled out in detail and mailed to Williams within 5 days of purchase

Name of Product \_\_\_\_\_ Serial Number \_\_\_\_\_ Date Purchased \_\_\_\_\_

Dealer from \_\_\_\_\_  
Whom Purchased \_\_\_\_\_

Your Name \_\_\_\_\_

Address \_\_\_\_\_ City \_\_\_\_\_ State \_\_\_\_\_

Was this game received in good condition?    Yes     No

Were any adjustments necessary?                Yes     No

If so - what adjustment? \_\_\_\_\_

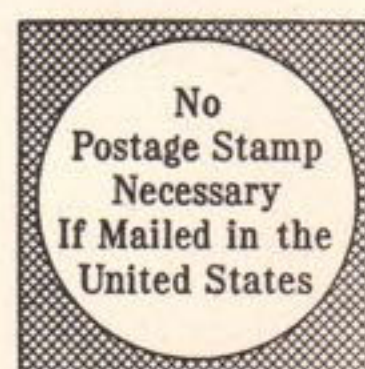
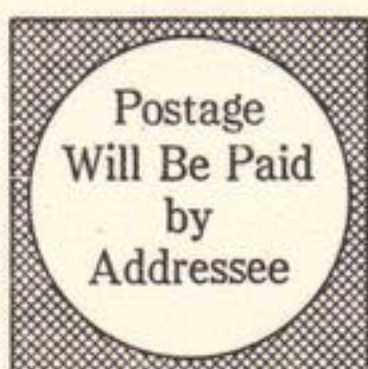
\_\_\_\_\_

What manufacturer's games do you prefer? \_\_\_\_\_

Why? \_\_\_\_\_

Suggested Improvements \_\_\_\_\_

\_\_\_\_\_

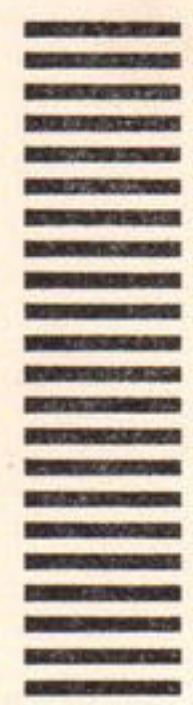


**BUSINESS REPLY CARD**  
FIRST CLASS PERMIT No. 36588, Sec. 34.9 P. L. & R., Chicago, Ill.

**WILLIAMS ELECTRONIC MFG. CORP.**

4242 W. FILLMORE STREET

CHICAGO 24, ILLINOIS



# ***IMPORTANT NOTICE***

---

---

**KINDLY INFORM LOCATIONS THAT THEY  
CAN TURN DISPLAY LIGHTS ON BY PRESSING  
LEFT FLIPPER BUTTON. MACHINE CAN STILL  
BE SHUT OFF BY TAPPING BOTTOM OF  
CABINET.**



# Now Ready!



## 1964

### PARTS CATALOG

# FREE

FILL IN POSTAGE FREE CARD  
BELOW AND MAIL

PLEASE SEND ME YOUR 1964  
PARTS CATALOG

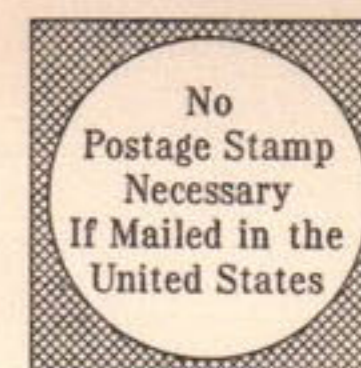
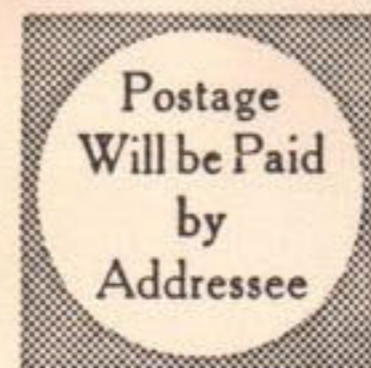
Name \_\_\_\_\_

Company \_\_\_\_\_

Address \_\_\_\_\_

City \_\_\_\_\_ Zone \_\_\_\_\_

State \_\_\_\_\_



**BUSINESS REPLY MAIL**  
First Class Permit No. 36588, Chicago, Ill.

**WILLIAMS ELECTRONIC MFG. CORP.**

4242 West Fillmore Street

Chicago, Illinois, 60624



# **INSTRUCTIONS**

**FOR**

**COIN INTAKE PLATES**

**FRONT MOULDING LOCK**

**PLAYFIELD LOCK**

**SLUG REJECTORS**

**ALSO**

**COIL CHART**

**POST ADJUSTMENT**

**SCORE CARDS**

**WIRING DIAGRAM**



*Williams*

ELECTRONIC MFG. CORP.

4242 W. FILLMORE ST., CHICAGO, ILL. 60624

20A8792