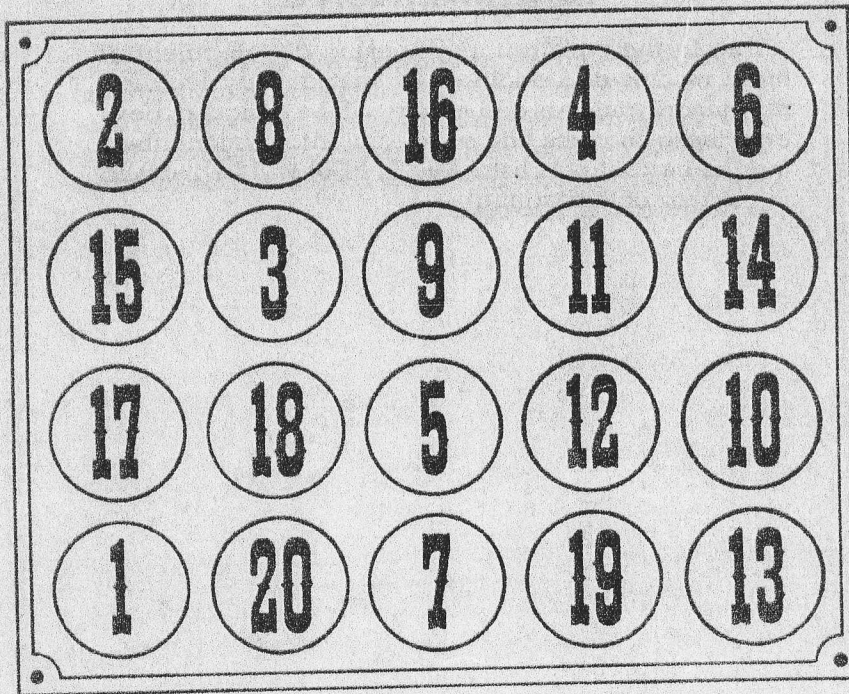


*Bally*

# BINGO GAMES

SERVICE INSTRUCTIONS AND PARTS CATALOG



*Bally*

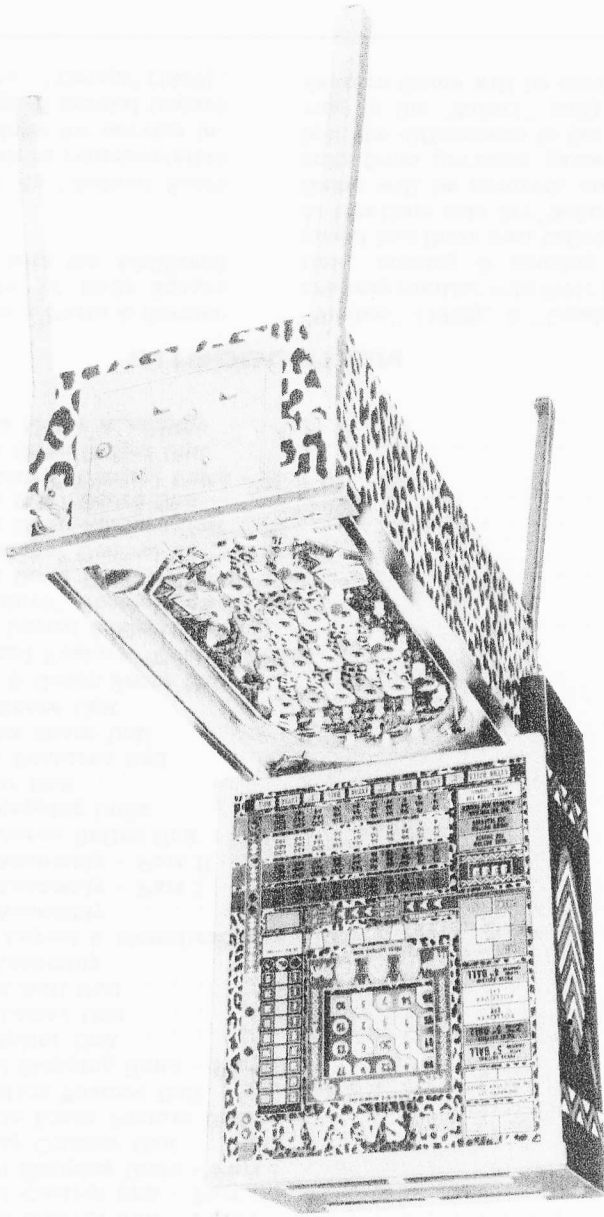
MANUFACTURING CORPORATION

2640 Belmont Avenue • Chicago, Illinois, 60618, U.S.A.

TELEPHONE (312) 267-6060/CABLE ADDRESS: BALFAN

### **SPECIAL NOTE**

Due to the constant engineering development of these models and additions of special play features, new model numbers and names will be assigned. However, these changes and all special information affecting the current part lists (Aug. 1, 1970) will be indexed in the rear of this manual.



SERVICE INSTRUCTIONS AND PARTS CATALOG

# SAFARI

## BINGO "ANIMAL FEATURE"

*Bally*<sup>®</sup>

Manual No. 1000  
Game No. 868  
August 1, 1970



# TABLE OF CONTENTS

## "SAFARI" BINGO GAME

	PAGE NO.
Introduction . . . . .	2
"Safari" Bingo Main Component Identification . . . . .	3
Front Cabinet Assembly - Part I	
Coin Drop & Control Buttons . . . . .	4-5
Front Cabinet Assembly - Part II . . . . .	
Ball Lift Units . . . . .	6-7
Front Cabinet Assembly - Part III	
Ball Shooter & "Come - Back Unit" . . . . .	8-9
Front Door Assembly	
Coin Acceptors & Control Buttons . . . . .	10-11
Playfield Panel - Top View . . . . .	12-13
Playfield Panel - Bottom View . . . . .	14-15
Back Cabinet & Insert Assembly - Part I	
Unit Layout & Identification . . . . .	16-17
Back Cabinet & Insert Assembly - Part II . . . . .	18-19
Back Cabinet & Insert Assembly - Part III . . . . .	20-21
Mystic Lines Unit - Front View . . . . .	22-23
Mystic Lines Unit - Rear View . . . . .	24-25
Back Cabinet Control Unit - Part I . . . . .	26-27
Back Cabinet Control Unit - Part II . . . . .	28-29
Back Cabinet Stepping Units - Part I	
Replay Counter Unit . . . . .	30-31
Mystic Lines Feature Unit . . . . .	30-31
Selection Feature Unit . . . . .	30-31
Back Cabinet Stepping Units - Part II	
Multiplier Unit . . . . .	32-33
Red Letter Unit . . . . .	32-33
Extra Ball Unit . . . . .	32-33
Back Door Assembly	
Unit Layout & Identification . . . . .	34-35
Trip Relay Assembly . . . . .	36-37
Mixer Unit Assembly - Part I . . . . .	38-39
Mixer Unit Assembly - Part II . . . . .	40
Regular Features Reflex Unit . . . . .	41
Back Door Stepping Units	
Timer Unit . . . . .	42-43
Twin Features Unit . . . . .	42-43
Yellow Score Unit . . . . .	42-43
Red Score Unit . . . . .	42-43
Blue & Green Score Unit . . . . .	42-43
"Safari Animal Feature" Control Board	
Unit Layout & Identification . . . . .	44
"Animal Feature" Control Units - Part I	
Up & Down Replay Counter Unit . . . . .	45
"Animal Feature" Control Units - Part II	
Up & Down Feature Unit . . . . .	46-47
Up & Down Score Unit . . . . .	46-47
"Animal Feature" Control Units - Part III	
Up & Down Reflex Unit . . . . .	48-49
Score Motor Assembly . . . . .	48-49

### INTRODUCTION

This book has been designed as a Parts & Service Manual for the current series of Bally Square Card, 20 Hole, Bingo Games with the Additional Special Feature Game.

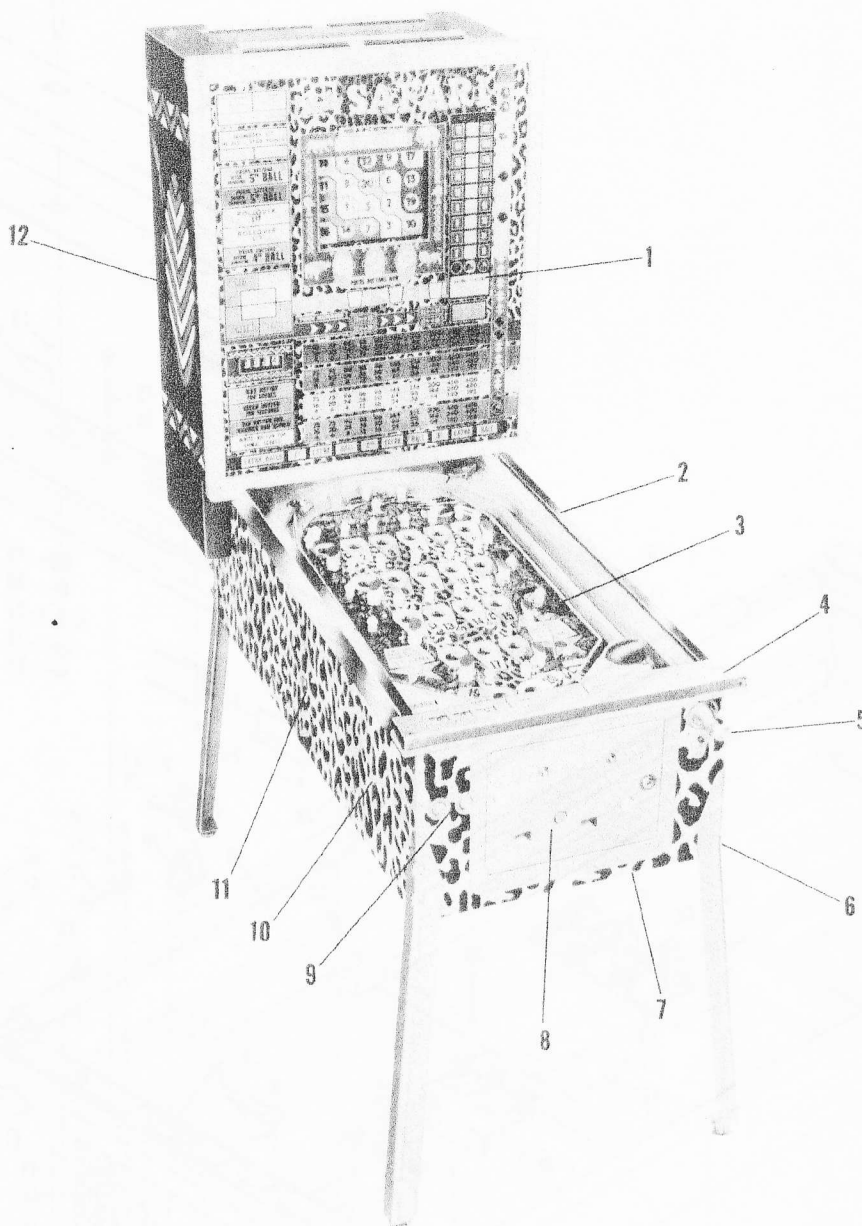
The Bally "Safari" Bingo with its "Animal Score Feature" was selected as a modern representative game for a complete part breakdown for service information. Previous Bally Bingo & special feature games in this model series are: "Orient" (1967),

"Venice" (1968), & "London" (1969). These games are very similar with their 20 hole, square card Bingo Unit, coining & scoring systems; however, each model has their own individual "Feature Game". At this time only the "Safari, Animal Feature" Bingo Game will be covered, omitting the special feature units from previous games. On all future models both the differences to the basic bingo game (referring to the "Safari" unit) and the complete Special Feature Game will be covered.



# "SAFARI" BINGO

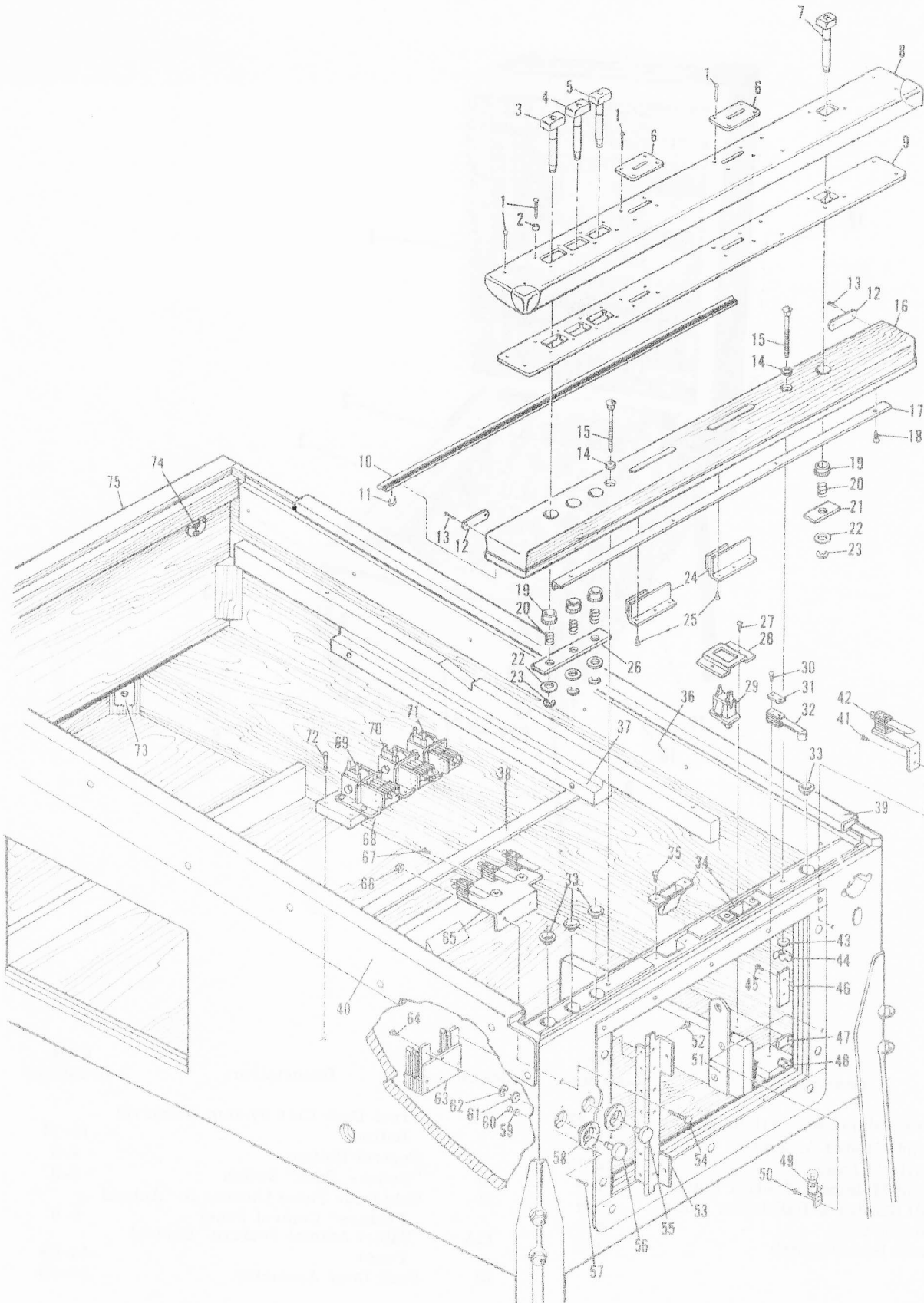
## MAIN COMPONENT IDENTIFICATION



Index No.	Description	Page Locations	Index No.	Description	Page Locations
1	Back Cabinet & Insert Assembly	16-33	8	Front Door Coin System & Control Buttons	10-11
2	Front Cabinet Assembly	4-11	9	Control Buttons	4-5
3	Playfield Panel	12-15	10	"Come - Back" Switch	8-9
4	Front Molding & Control Buttons	4-5	11	Side Door Panel (Access to "Animal Feature" Control Panel	8-9
5	Ball Shooter & Ball Lifter Units	6-9	11A	"Safari Animal Feature" Control Panel	44-49
6	Cabinet Legs	8-9	12	Back Door Assembly	34-43
7	Game Power Switch	4-5			

# FRONT CABINET ASSEMBLY - PART I

## COIN DROP & CONTROL BUTTONS



# FRONT CABINET ASSEMBLY - PART I

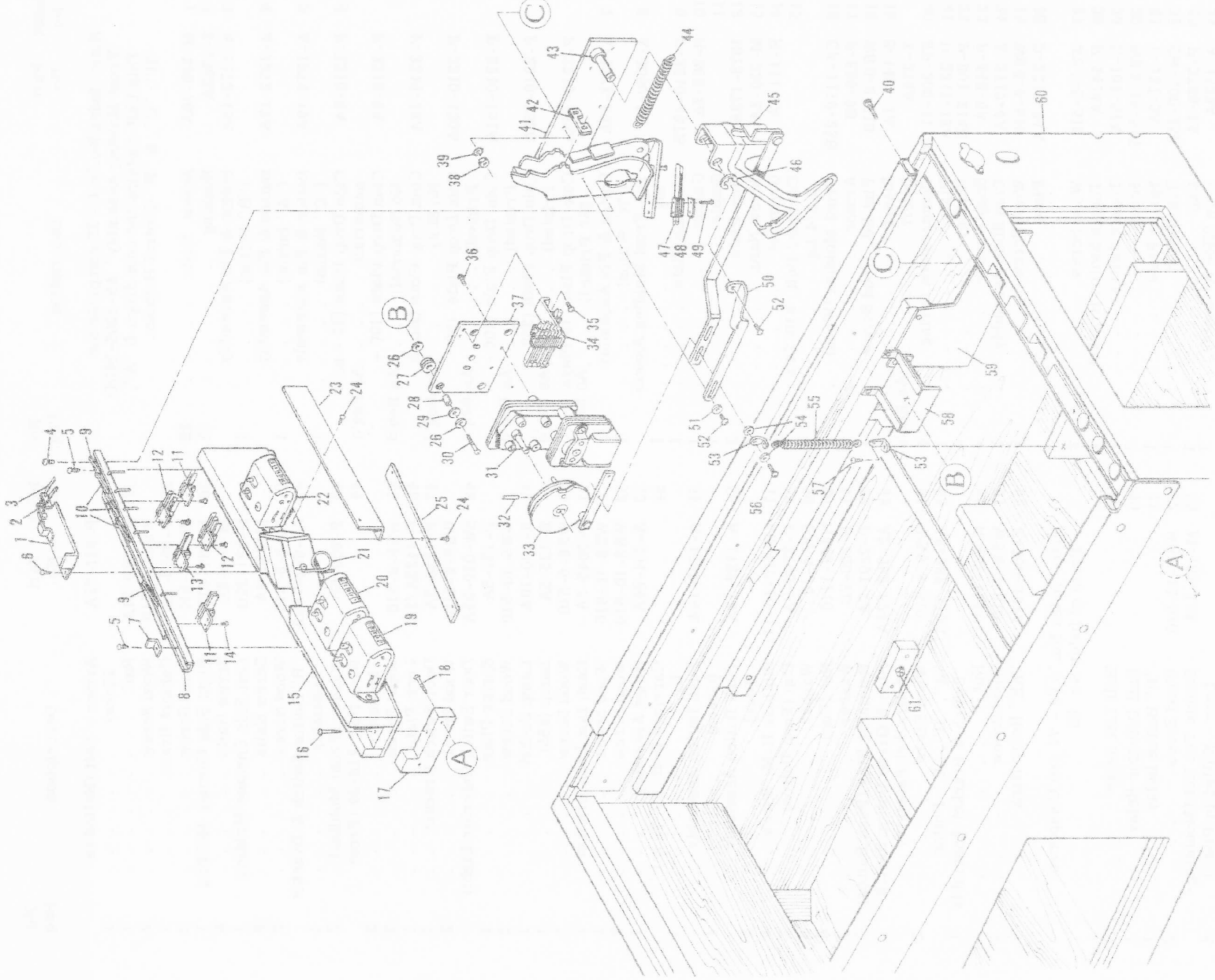
*Bally*

## COIN DROP & CONTROL BUTTONS

Index No.	Part No.	Description	No. Req.	Index No.	Part No.	Description	No. Req.
Note: Index No.'s 1 - 26 comprise the "Front Molding Assembly" AS-1305-54ND This Unit contains the coin drops & "A", "B", "C", & "R" Control Buttons.					P-921-32A	Armor - Left (Nailed in Place)	1
1	M-330-10A	Screw, Nails	22	37	CA-590-21A	Rail	1
2	S-1582A	Bushing	12		WS 8-20-510	Wood Screw	2
3	A-1272-18A	Button & Pin Assembly ("B" Button)	1	38	P-5683-1B	Cabinet Brace	1
4	A-1272-17A	Button & Pin Assembly ("A" Button)	1		WS 8-8-510	Wood Screw	2
5	A-1272-19A	Button & Pin Assembly ("C" Button)	1	39	P-921-40B	Right Side Chrome Molding	1
6	P-2210-8A	Coin Drop Plate (5¢ - no numeral)	As Req'd		M-330-8A	Screw Nails	8
	P-2210-9A	Coin Drop Plate (10¢ - No Numerial)	As Req'd	40	P-921-39B	Left Side Chrome Molding	1
	P-2210-12A	Coin Drop Plate (Blank - No Slot)	As Req'd		M-330-8A	Screw Nails	8
	P-2210-150A	Coin Drop Plate (5¢ - Printed)	As Req'd	41	WS 8-8-510	Wood Screw	2
	P-2210-151A	Coin Drop Plate (10¢ - Printed)	As Req'd	42	AS-982-759A	"R" Button Switch & Bracket Assembly	1
	P-2210-152A	Coin Drop Plate (25¢ - Printed)	As Req'd	43	P-800-6B	Washer (Front Molding)	2
	P-2210-153A	Coin Drop Plate (5 Plays - 25¢ Printed)	As Req'd	44		Wing Nut, #10-24 (Front Molding)	2
7	A-1272-29A	Button & Pin Assembly ("R" Button)	1	45	WS 8-8-510	Wood Screw	2
8	A-3080-5B	Top Front Molding Assembly	1	46	P-4423A/1A	Lock Plate	1
9	P-2210-167B	Molding Plate	1	47	P-1820-3A	Door Switch Bracket	1
10	R-362-2A	Gasket	1		WS 6-6-510	Wood Screw	2
11		Staple	7	48	SW-010-55A	Door Switch (Interior Light)	1
12	1973-173A	Stop Plate	2		P-137-5A	Spring Plate	1
13	M-330-2A	Screw Nails	4		WS 5-10-510	Wood Screw	2
14	R-111-9A	Grommet	2	49	E-120-10A	Lamp Socket	1
15		Carriage Bolt, #10-24 x 2 3/4 Lg.	2		E-125-5A	Lamp (#55)	1
16	CA-1119-25B	Front Molding (Wood)	1	50	WS 6-6-510	Wood Screw	1
17	P-886-3B	Armor	1	51	P-3045-5A	Cash Box Lock Bracket	1
18	WS 8-8-210	Flat Hd. Wood Screw	4		WS 8-10-910	Wood Screw	1
19	S-1481-1A	Insert	4	52	WS 8-10-610	Wood Screw	3
	T-376A	Insert	As Req'd	53	A-254-84A	Hinge Assembly	1
20	SP-200-111B	Compression Spring	4	54		Carriage Bolt, #8-32 x 1" Lg.	1
21	P-2211-18A	Plate	1	55	A-1729-14A	Push Button Assembly (Green)	1
22	P-801-214B	Washer	4	56	A-1729-13A	Push Button Assembly (Blue)	1
23	P-448-6A	Snap Washer	4	57	MS 440-16-711	Slotless H.M. Screw	6
24	A-2719-4A	Coin Slide Assembly	2	58	P-2768-9A	Cup (Push Button)	2
25	WS 6-8-510	Wood Screw	6	59	PW 4-10	Washer	6
26	P-2211-24A	Plate	1	60	N440-1110	Nut (Cup)	6
27	WS 8-6-510	Wood Screw	2	61	P-800-2B	Washer	2
28	P-4414A	Toggle Switch Bracket	1	62	P-2891-7A	Retaining Ring (Push Button)	2
29	E-108-57A	Toggle Switch	1	63	AS-982-624A	Blue & Green Button Switch & Bracket Assembly	1
30	WS 5-16-510	Screw	2	64	WS 8-8-510	Wood Screw	2
31	P-137-5A	Spring Plate	1	65	AS-982-710A	"A", "B", "C" Button Switch & Bracket Assembly	1
32	SW-100-25A	Tilt Switch	1	66	N 832-1111	Nut	1
33	P-2768-1A	Cup	4	67	WS 8-8-510	Wood Screw	1
34	A-1533A	Coin Slide Assembly	2	68	E-300-494A	"KK" Relay Bank	1
35	WS 6-6-510	Wood Screw	4	Note: Index No.'s 69 - 71 are Component Parts of Index No. 68			
36	P-921-31A	Armor - Right (Nailed in Place)	1	69		Ball Lift Relay	1
				70		Ball Detector Relay	1
				71		"R" Button Relay	1
				72	WS 8-12-510	Wood Screw	2
				73	M-108-11A	Double Tee Nut (Mounting-Legs - Nailed in Place)	4
				74	M-108-1A	Tee Nut (Mounts Back Cabinet)	4
				75	CA-1119-32ND	Front Cabinet (Includes Index No.'s 36, 73 - 74)	1

# FRONT CABINET ASSEMBLY--PART II

## BALL LIFT UNITS



ALWAYS GIVE MODEL AND PART NO. WHEN ORDERING SERVICE PARTS



# FRONT CABINET ASSEMBLY-PART II



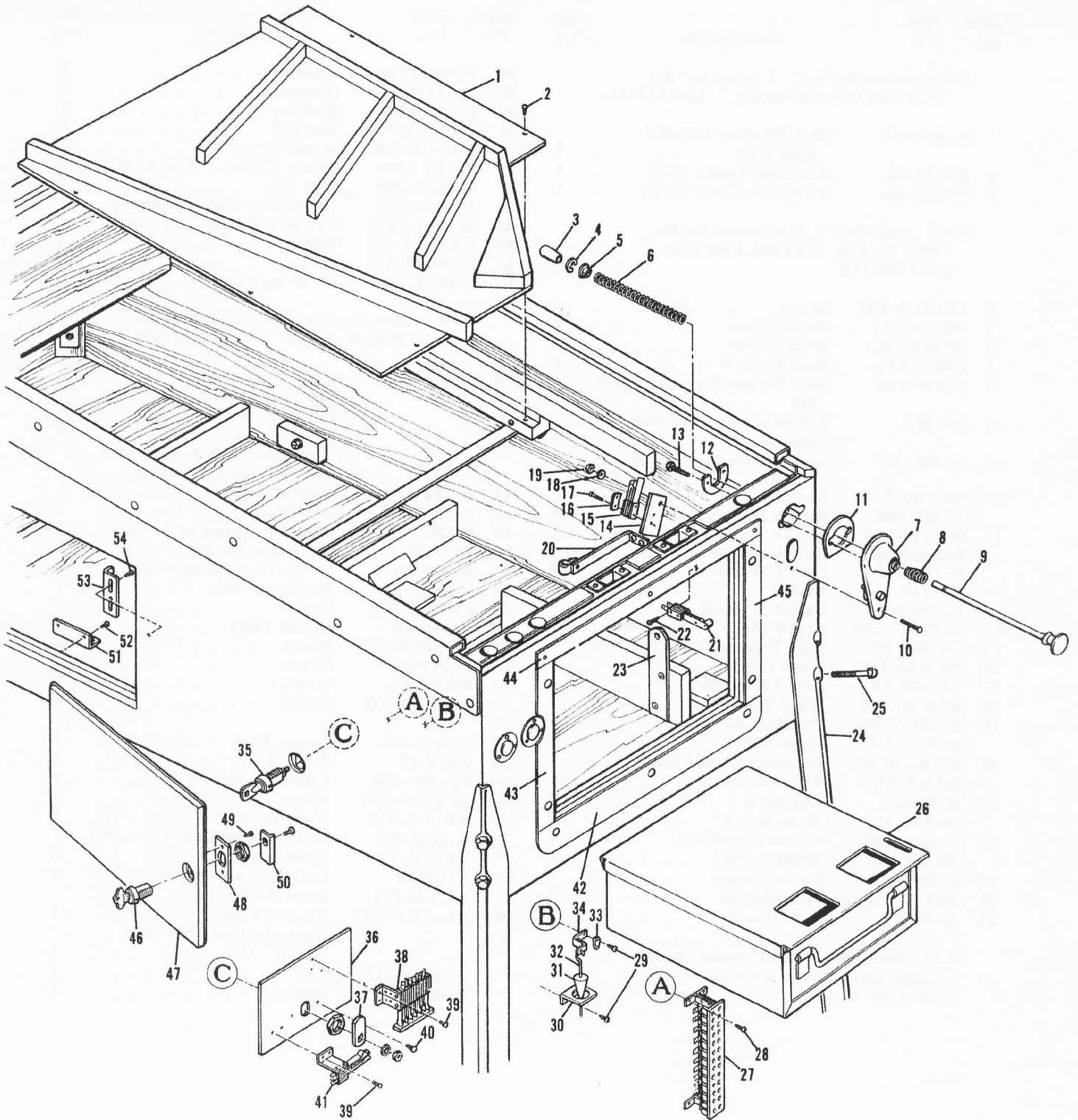
## BALL LIFT UNITS

Index No.	Part No.	Description	No. Req.	Index No.	Part No.	Description	No. Req.
Note: Index No.'s 1 - 3 comprise the "Ball Retainer Assembly," AS-1517-6A.				26	P-801-173B	Washer . . . . .	8
1	A-1874-2A	Ball Retainer Bracket Assembly . . . . .	1	27	R-111-7A	Grommet . . . . .	4
2	M-497-2A	Ball Gate (Inner Unit) . . . . .	1	28	S-231-658B	Bushing . . . . .	4
3	M-497-4A	Ball Gate (Outer Unit) . . . . .	1	29	P-801-207B	Washer . . . . .	4
Note: Index No.'s 4-25 comprise the "Ball Trough & Switch Assembly," AS-1145-44B				30	WS 8-16-510	Wood Screw . . . . .	4
4	LS 832-4-611	Screw . . . . .	1	31	E-119-339B	Motor (50/60 - 45 R.P.M.)	1
5	WS 8-6-510	Wood Screw . . . . .	2	32	P-1637-23B	Roll Pin . . . . .	1
6	WS 6-6-510	Wood Screw . . . . .	2	33	A-800-159A	Ball Lifter Cam Assembly	1
7	P-417-12A	Stop Bracket . . . . .	1	34	AS-982-751A	Switch & Bracket Assembly	1
8	A-429-15B	Ball Trough Runway Assembly . . . . .	1	35	LS 632-4-510	Screw . . . . .	2
9	M-497A	Switch Actuator (2 End Units) . . . . .	2	36	LS 832-5-510	Screw . . . . .	4
10	M-497-1A	Switch Actuator (Middle Units) . . . . .	3	37	P-2643-1A	Mounting Plate . . . . .	1
11	SW-100-31A	Switch . . . . .	2	Note: Index No.'s 38 - 52 Comprise the "Ball Lifter Assembly", AS-186-11ND.			
	P-126-56A	Switch Bracket . . . . .	2	38	N1024-1111	Nut . . . . .	2
12	SW-010-36A	Switch (Inside) . . . . .	2	39		#10 Lockwasher . . . . .	2
	SW-100-98A	Switch (Outside) . . . . .	2	40		Carriage Bolt, #10-24 x 1 1/4" Lg. . . . .	2
	P-126-56A	Switch Bracket . . . . .	2			(Plus one WS 8-8-510 Screw is used for attachment)	
13	SW-010-11A	Switch . . . . .	1	41	A-269-6B	Base Assembly . . . . .	1
	P-126-146A	Switch Bracket . . . . .	1	42	P-1429-1A	Stop Plate . . . . .	1
14	LS 632-3-510	Screw (All SW. Brackets) . . . . .	10	43	S-230-23B	Bushing (Shown in Place)	1
15	CA-593-9C	Ball Trough (Wood Portion)	1	44	SP-162A	Extension Spring . . . . .	1
16	WS 8-24-510	Wood Screw . . . . .	1	45	A-270-6B	Lifter Lever Assembly . . . . .	2
17	CA-592-2A	Ball Trough Sill . . . . .	1	46	P-2891-8A	Retaining Ring . . . . .	1
18	WS 8-20-510	Wood Screw . . . . .	2	47	SW-100-29A	Switch . . . . .	1
19	E-130-10 ND	Counter (Key Plays) . . . . .	1	48	P-137-5A	Spring Plate . . . . .	1
	WS 8-6-510	Wood Screw . . . . .	2	49	MS 540-8-110	Screw . . . . .	2
20	E-130-10 ND	Counter (Total Plays) . . . . .	1	50	P-1775A	Brace . . . . .	1
	WS 8-6-510	Wood Screw . . . . .	1	51	PW 8-10	Washer . . . . .	1
21	M-389A	Key Hook . . . . .	1	52	LS 832-4-510	Screw . . . . .	2
	WS 8-6-510	Wood Screw . . . . .	1	53	P-405-14A	Spring Hook . . . . .	2
22	E-130-10ND	Counter (Replays) . . . . .	1	54	PW 8-10	Washer . . . . .	2
	WS 8-6-510	Wood Screw . . . . .	2	55	SP-100-35B	Extension Spring . . . . .	1
23	P-2760-2A	Switch Guard . . . . .	1	56	LS 832-4-511	Screw . . . . .	2
24	WS 6-6-510	Wood Screw . . . . .	6	57	WS 8-8-510	Wood Screw . . . . .	1
25	M-739A	Dust Guard . . . . .	1	58	A-1530-4A	Switch Cover (Index No. 34)	1
Note: Index No.'s 26-37 comprise the "Ball Lifter Motor Assembly," AS-1139-23 ND.				59	WS 6-6-510	Wood Screw . . . . .	2
					P-3098B	Ball Shooter Armor . . . . .	1
					WS6-6-510	Wood Screw . . . . .	1
				60	CA-1119-32D	Front Cabinet . . . . .	1
				61		Carriage Bolt, #10-24 x 1 3/4" Lg. . . . .	1
					N 1024-1111	Nut . . . . .	1
					P-801-107B	Washer . . . . .	1

*Bally*

# FRONT CABINET ASSEMBLY—PART III

BALL SHOOTER & "COME BACK KEY" UNIT



ALWAYS GIVE MODEL AND PART NO. WHEN ORDERING SERVICE PARTS

# FRONT CABINET ASSEMBLY-PART III

*Bally*

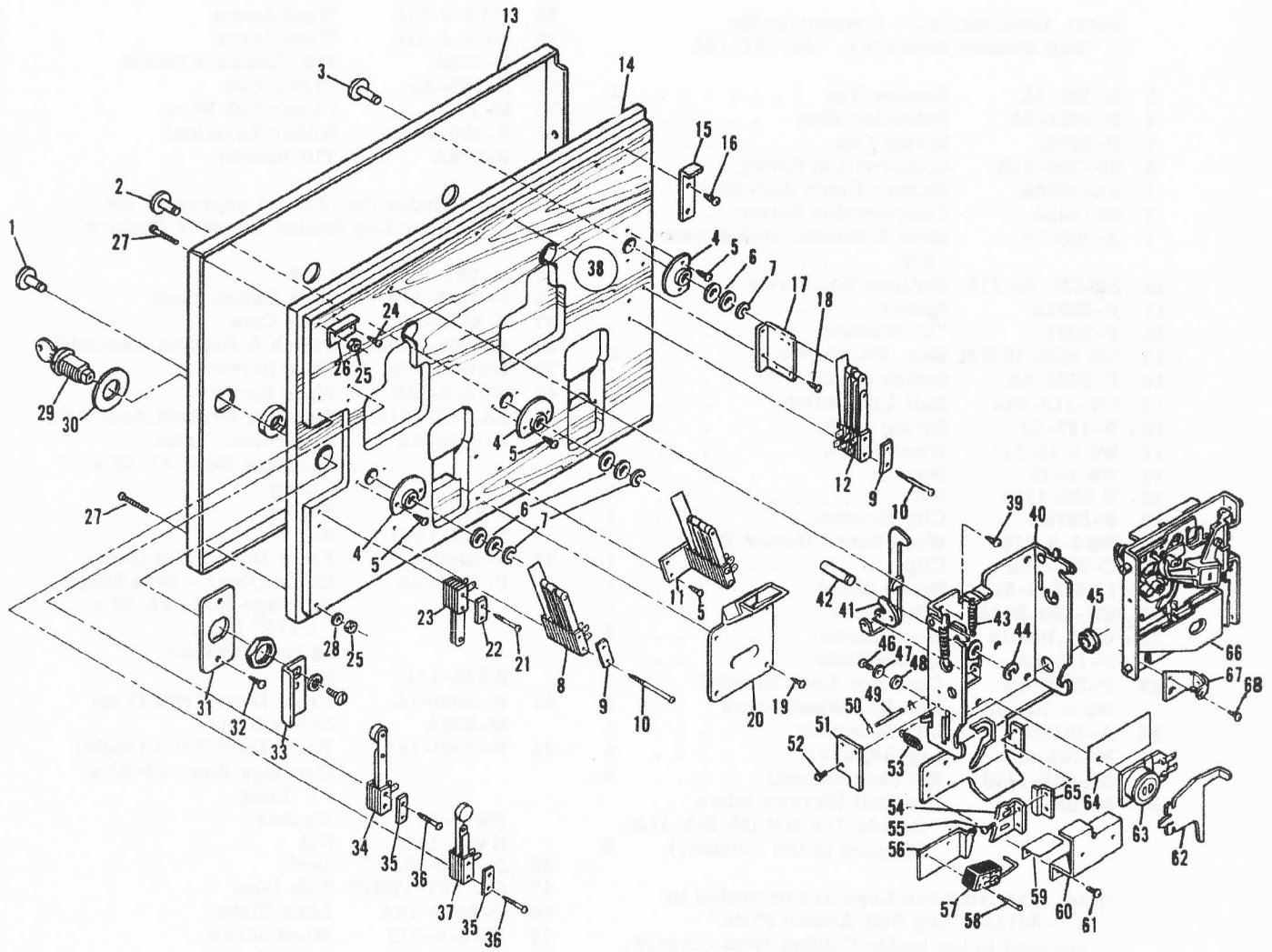
## BALL SHOOTER & "COME BACK KEY" UNIT

Index No.	Part No.	Description	No. Req.	Index No.	Part No.	Description	No. Req.
1	CA-439-24C	Ball Return Panel . . . . .	1	27	E-137-24A	Connector (Front Door Cable) (24 Pt. Female)	1
2	WS 6-8-510	Wood Screw . . . . .	5		E-139-24A	Connector (24 Pt. Male)	1
<p>Note: Index No. 's 3 - 9 comprise the "Ball Shooter Assembly," AS-187-17A</p>				28	WS 6-6-510	Wood Screw	4
3	R-108-3A	Shooter Tip . . . . .	1	29	WS 6-6-510	Wood Screw	4
4	P-2891-8A	Retaining Ring . . . . .	1	30	P-275A	Tilt Contact Bracket	1
5	P-2879A	Spring Cap . . . . .	1	31	E-138-3A	Plumb Bob	1
6	SP-200-24B	Compression Spring . . . . .	1	32	M-175A	Plumb Bob Wire	1
7	AS-1835A	Shooter Guide Assembly . . . . .	1	33	P-405-14A	Solder Terminal	1
8	SP-243A	Compression Spring . . . . .	1	34	P-274A	Tilt Hanger	1
9	A-100-7A	Knob & Shooter Rod Assembly . . . . .	1	<p>Note: Index No. 35 - 41 represent the "Kumbac Key Replay Register Feature".</p>			
10	MS 632-20-713	Slotless Hd. Screw . . . . .	1	35	M-281-58A	Lock	1
11	P-2895A	Spacer . . . . .	1	36	P-3473-11A	Lock Switch Plate	1
12	P-2907	"U" Washer . . . . .	1	37	P-6434-3A	Lock Cam	1
13	MS 1032-18 H.H.	Hex. Hd. Screw . . . . .	2	38	AS-982-673A	Switch & Bracket Assembly	1
14	P-3954-3A	Switch Shield . . . . .	1	39	WS 6-6-510	Wood Screw	4
15	SW-110-64A	Ball Lift Switch . . . . .	1	40	WS 8-8-510	Wood Screw	2
16	P-137-5A	Spring Plate . . . . .	1	41	AS-982-671A	Switch & Bracket Assembly	1
17	WS 5-16-510	Wood Screw . . . . .	2	42	P-5940-8A	Front Door Trim Carriage Bolt, #8-32 x 1" Long	3
18	PW 6-10	Washer . . . . .	1		PW 8-10	Washer	3
19	N 632-1110	Nut . . . . .	1		N 832-1110	Nut	3
20	P-3375A	Clip Bracket . . . . .	1	43	P-5940-17B	Front Door Trim (Left)	1
	WS 8-8-510	Wood Screw (Mount Brk.) . . . . .	2		P-2833-4A	Baffle (Rear - over hinge)	1
	C-271-10A	Clip . . . . .	1			Carriage Bolt, #8-32 x 1 1/4" Long	2
	LS 832-8-511	Screw (Clip) . . . . .	1			#8 Lock Washer	2
21	SW-100-245A	Tilt Switch . . . . .	1		N 832-1110	Nut	2
22	WS 5-10-510	Wood Screw . . . . .	2	44	P-5940-7A	Front Door Trim (Top)	1
	P-137-5A	Spring Plate . . . . .	1		M-330A	Screw Nails	5
23	P-3045-5A	Cash Box Lock Bracket . . . . .	1	45	P-5940-18A	Front Door Trim (Right)	1
	WS 8-10-910	Flat Hd. Wood Screw . . . . .	2			Carriage Bolt, #8-32 x 1" Long	2
24	A-2618B	Leg Assembly . . . . .	4		PW 8-10	Washer	2
	M-163-4A	Leg Adjuster . . . . .	4		N 832-1110	Nut	2
	N3-816-1110	Nut (Adjustment) . . . . .	4	46	M-281-55A	Lock	1
25	M-106-1A	Leg Bolt (Screws into a Double Tee Nut (M-108-11A Mounted in the Cabinet,)	8	47	CA-567-178ND	Side Door	1
<p>Note: The front two Legs are protected by a P-3914A "Leg Bolt Armor Plate" mounted in the inside Cabinet front corners.</p>				48	P-3473-10A	Lock Plate	1
26	A-2790-19B	Cash Box . . . . .	1	49	WS 8-6-510	Wood Screw	2
	P-3089-30B	Cash Box Cover . . . . .	1	50	P-6434-3A	Lock Cam	1
	P-6074-59A	Cash Box Divider . . . . .	1	51	P-6665-72A	Bracket	1
	P-6074-60B	Cash Box Divider (Multi-coin games) . . . . .	1	52	WS 8-8-510	Wood Screw	2
				53	P-4000-1A	Lock Bracket	1
				54	WS 8-8-510	Wood Screw	2

ALWAYS GIVE MODEL AND PART NO. WHEN ORDERING SERVICE PARTS

# FRONT DOOR ASSEMBLY

## COIN ACCEPTORS & CONTROL BUTTONS



ALWAYS GIVE MODEL AND PART NO. WHEN ORDERING SERVICE PARTS



# FRONT DOOR ASSEMBLY

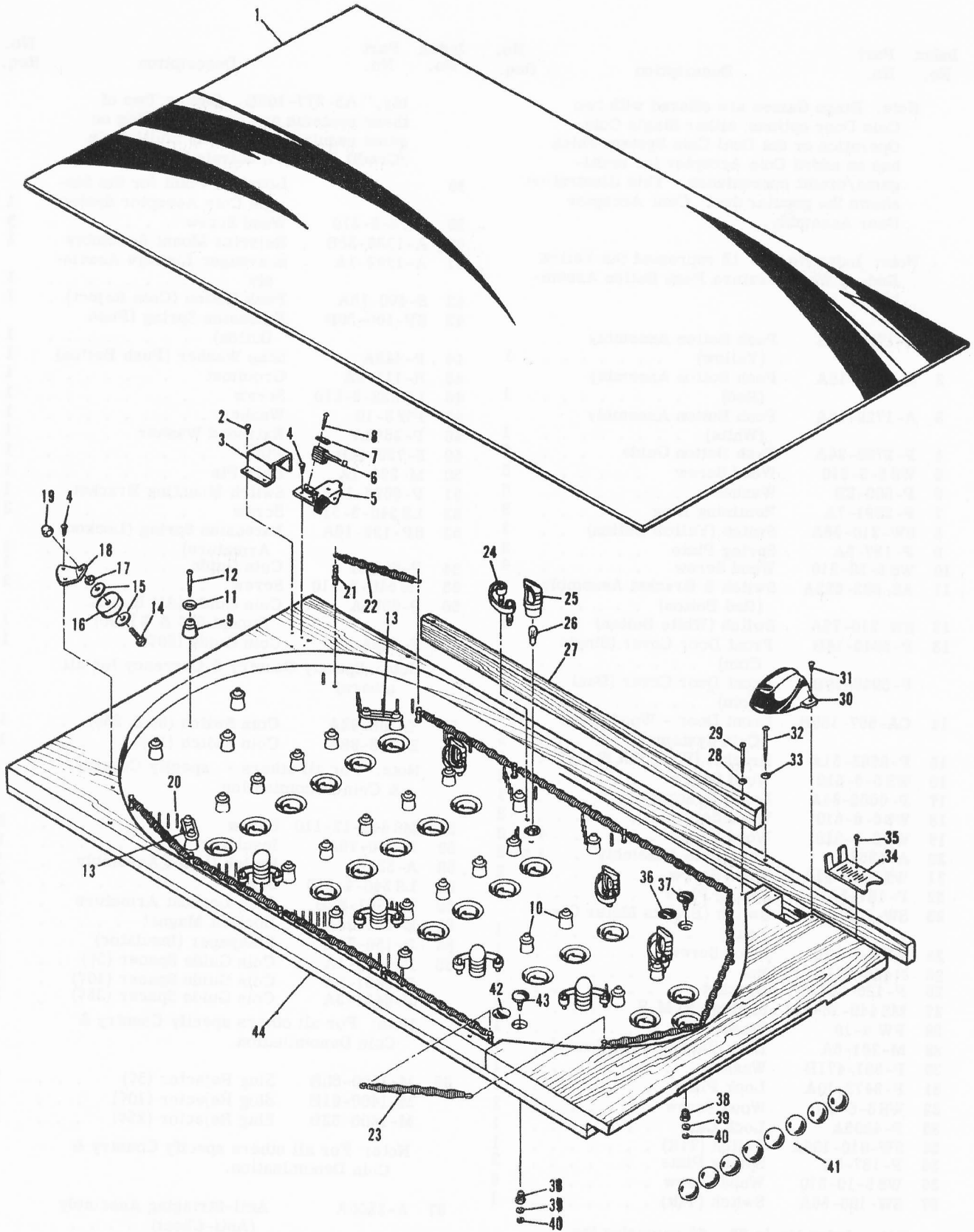
*Bally*

## COIN ACCEPTORS & CONTROL BUTTONS

Index No.	Part No.	Description	No. Req.	Index No.	Part No.	Description	No. Req.
<p>Note: Bingo Games are offered with two Coin Door options; either Single Coin Operation or the Dual Coin System which has an added Coin Acceptor for multi-game/credit convenience. This illustration shows the popular dual Coin Acceptor Door Assembly.</p>				<p>bly, " AS-277-105B. One or Two of these systems are used depending on game requirements. The Multi-Coin /Credit Unit is illustrated.</p>			
<p>Note: Index No. 1 - 12 represent the Yellow Red, &amp; White Feature Push Button Assemblies.</p>				38		Location Point for the Single Coin Acceptor System	1
1	A-1729-15A	Push Button Assembly (Yellow)	1	39	WS 8-8-510	Wood Screw	3
2	A-1729-16A	Push Button Assembly (Red)	1	40	A-1388-36B	Rejector Mount Assembly	1
3	A-1729-18A	Push Button Assembly (White)	1	41	A-1392-1A	Scavenger Linkage Assembly	1
4	P-2768-26A	Push Button Guide	3	42	S-490-18A	Push Button (Coin Reject)	1
5	WS 6-6-510	Wood Screw	8	43	SP-100-30B	Extension Spring (Push Button)	1
6	P-800-2B	Washer	6	44	P-448A	Snap Washer (Push Button)	1
7	P-2891-7A	Retaining Ring	3	45	R-111-8A	Grommet	1
8	SW-210-56A	Switch (Yellow Button)	1	46	LS 832-8-510	Screw	1
9	P-137-5A	Spring Plate	2	47	PW 8-10	Washer	1
10	WS 5-30-510	Wood Screw	4	48	P-2552A	Extruded Washer	1
11	AS-982-622A	Switch & Bracket Assembly (Red Button)	1	49	S-739-44B	Pin	1
12	SW-210-75A	Switch (White Button)	1	50	M-254-1A	Hair Pin	1
13	P-5946-18B	Front Door Cover (Single Coin)	1	51	P-6692-1A	Switch Mounting Bracket	1
	P-5946-19B	Front Door Cover (Dual Coin)	1	52	LS 540-3-510	Screw	2
14	CA-567-165B	Front Door - Wood (Both Coin Systems)	1	53	SP-199-16A	Extension Spring (Lockout Armature)	1
15	P-6665-51A	Bracket (Wing Nut Shield)	1	54	P-6695A	Coin Guide	1
16	WS 6-6-510	Wood Screw	2	55	LS 540-3-510	Screw	2
17	P-6665-84A	Latch Bracket	1	56	P-6694A	Coin Guide (All U.S.A. Except 50¢ & \$1.00)	1
18	WS 6-6-510	Wood Screw	2		P-6694-1A	Coin Guide (50¢)	1
19	WS 8-8-510	Wood Screw	4 or 8	Note: Specify Country & Currency for all others)			
20	A-1363A	Coin Slide Assembly	1 or 2	57	E-108-92A	Coin Switch (5¢ & 25¢)	1
21	WS 5-12-510	Wood Screw	2		E-108-98A	Coin Switch (10¢)	1
22	P-137-5A	Spring Plate	1	Note: For all others - specify Country & Coin Denomination			
23	SW-100-107A	Switch (Breaks Meter Circuit)	1	58	MS 440-12-110	Screw	2
24	WS 6-6-510	Wood Screw	1	59	P-150-78A	Insulator	1
25	N 440-1110	Nut	2	60	A-3347A	Switch Guard Assembly	1
26	P-126-264A	Bracket	1	61	LS 540-4-510	Screw	2
27	MS 440-16-711	Slotless H.M.S.	2	62	P-2861-22B	Coin Lockout Armature	1
28	PW 4-10	Washer	1	63	E-101-58A	Lockout Magnet	1
29	M-281-6A	Lock (Includes Hardware)	1	64	P-150-71A	Fishpaper (Insulator)	1
30	P-801-471B	Washer	1	65	P-6431-1A	Coin Guide Spacer (5¢)	1
31	P-3473-10A	Lock Plate	1		P-6431-8A	Coin Guide Spacer (10¢)	1
32	WS 8-6-510	Wood Screw	2		P-6431-3A	Coin Guide Spacer (25¢)	1
33	P-4005A	Lock Cam	1	Note: For all others specify Country & Coin Denomination.			
34	SW-010-185A	Switch (Tilt)	1	66	M-1400-60B	Slug Rejector (5¢)	1
35	P-137-5A	Spring Plate	2		M-1400-61B	Slug Rejector (10¢)	1
36	WS 5-10-510	Wood Screw	4		M-1400-62B	Slug Rejector (25¢)	1
37	SW-100-56A	Switch (Tilt)	1	Note: For all others specify Country & Coin Denomination.			
<p>Note: Index No.'s 38 - 65 comprise the "Coin Switch &amp; Rejector Mount Assem-</p>				67	A-3300A	Anti-Stringing Assembly (Anti-Cheat)	1
				68	LS 632-5-511	Screw	1

ALWAYS GIVE MODEL AND PART NO. WHEN ORDERING SERVICE PARTS

# PLAYFIELD PANEL-TOP VIEW



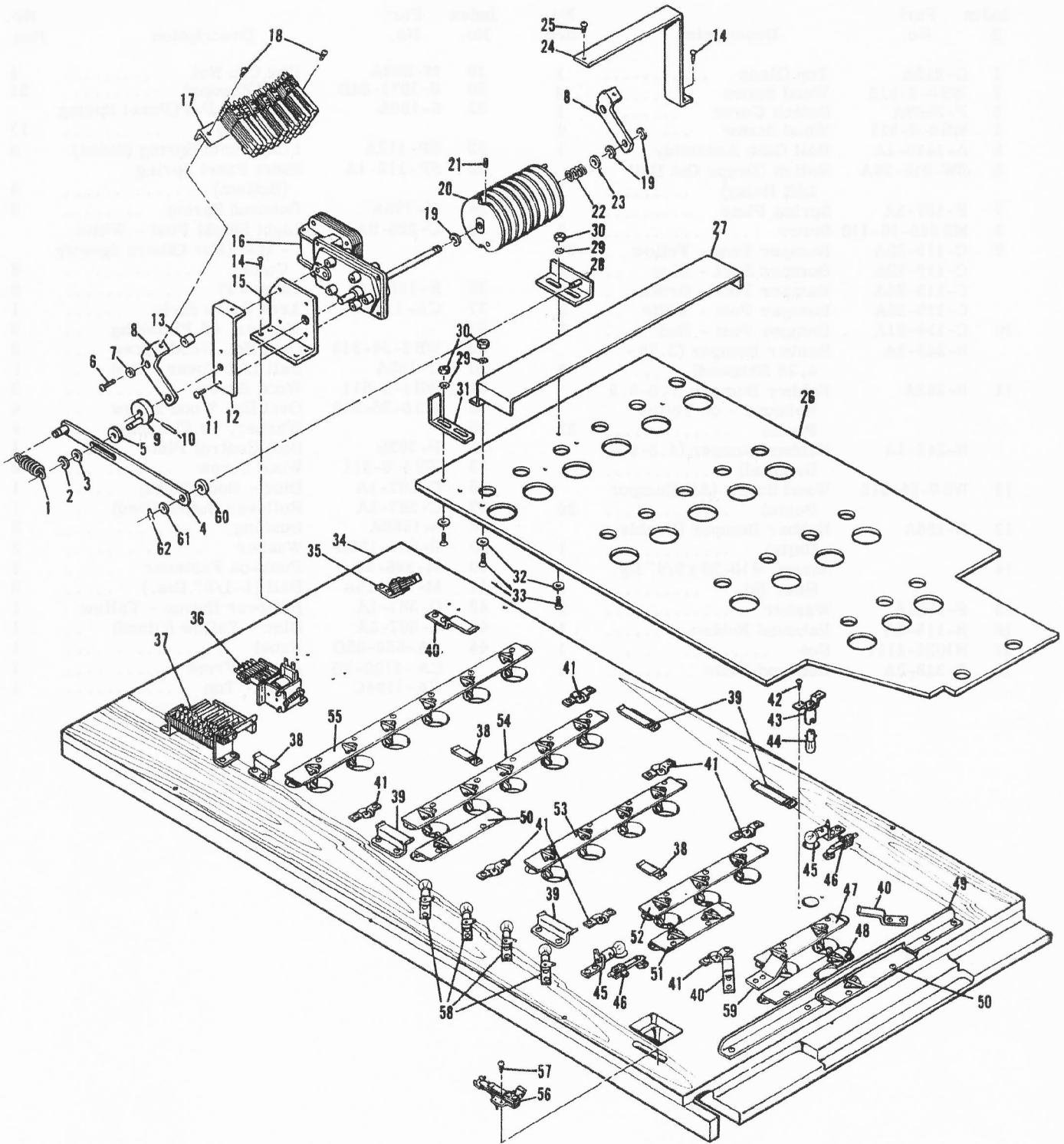
ALWAYS GIVE MODEL AND PART NO. WHEN ORDERING SERVICE PARTS

# PLAYFIELD PANEL-TOP VIEW

Index B	Part No.	Description	No. Req.	Index No.	Part No.	Description	No. Req.
1	G-213A	Top Glass .....	1	19	M-296A	Hex Cap Nut .....	1
2	WS 6-3-513	Wood Screw .....	2	20	S-1071-84B	Rod (Pinning) .....	51
3	P-2996A	Switch Cover .....	1	21	S-196A	Playfield Pin (Panel Spring Springs) .....	13
4	WS 6-8-511	Wood Screw .....	4	22	SP-112A	Long Panel Spring (Sides)	8
5	A-1475-1A	Ball Gate Assembly ..	1	23	SP-112-1A	Short Panel Spring (Bottom) .....	4
6	SW-010-26A	Switch (Drops Out Ball Lift Relay) .....	1	24	M-170A	Rebound Spring .....	8
7	P-137-5A	Spring Plate .....	1	25	C-326-9A	Light Shield Post - White - Red (For Others Specify Color) .....	8
8	MS 540-10-110	Screw .....	2	26	E-125-2A	Lamp #47 .....	8
9	C-119-23A	Bumper Post - Yellow ..	27	27	CA-1103A	Arch Guide Strip .....	1
	C-119-22A	Bumper Post - Blue ..	0	28		Washer, #3 Finishing ..	3
	C-119-24A	Bumper Post - Green ..	0	29	WS 6-24-313	Oval Hd. Wood Screw ..	3
	C-119-25A	Bumper Post - White ..	0	30	C-153A	Ball Lift Cover - Red ..	1
10	C-119-21A	Bumper Post - Red ...	2	31	WS 4-8-511	Wood Screw .....	2
	R-243-2A	Rubber Bumper (3.75 - 4.25 Rebound) .....	2	32	WS 8-36-313	Oval Hd. Wood Screw ..	4
11	R-243A	Rubber Bumper (5.0-5.5 Rebound - on Yellow Posts) .....	23	33		Washer, #8 Finishing ..	4
	R-243-1A	Rubber Bumper (4.5-5.0 Rebound) .....	0	34	P-363B	Ball Control Plate .....	1
12	WS 6-24-513	Wood Screw (All Bumper Posts) .....	29	35	WS 4-6-511	Wood Screw .....	2
13	R-135A	Rubber Bumper (Double Units) .....	1	36	C-667-1A	Disc - Red (Glued) .....	1
14		Screw, #10-24 x 3/4" Lg. Hex. Hd. .....	1	37	C-387-1A	Rollover Button (Red) ..	1
15	P-1901A	Washer .....	2	38	S-1559A	Bushing .....	2
16	R-115-4A	Rebound Rubber .....	1	39	P-801-125B	Washer .....	2
17	N1024-1111	Nut .....	1	40	M-298-9A	Push-on Fastener .....	2
18	P-318-2A	Rebound Plate .....	1	41	M-168-15A	Ball (1-1/8" Dia.) .....	8
				42	C-387-1A	Rollover Button - Yellow	1
				43	C-667-3A	Disc - Yellow (Glued) ..	1
				44	CA-638-85D	Panel .....	1
					CA-1100-3B	Arch - Front .....	1
					CA-1104C	Arch - Top .....	1

ALWAYS GIVE MODEL AND PART NO. WHEN ORDERING SERVICE PARTS

# PLAYFIELD PANEL - BOTTOM VIEW



ALWAYS GIVE MODEL AND PART NO. WHEN ORDERING SERVICE PARTS



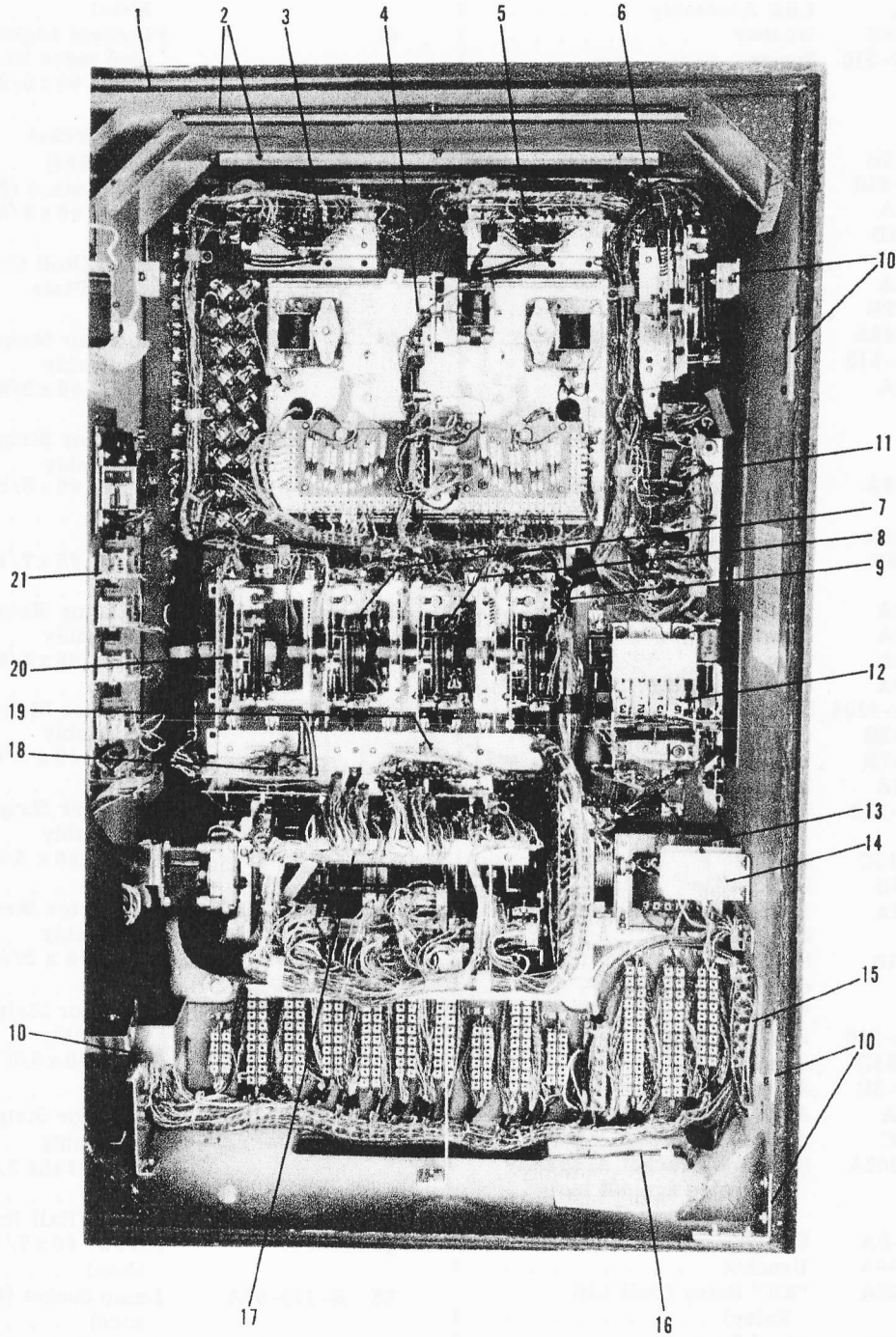
# PLAYFIELD PANEL - BOTTOM VIEW



Index No.	Part No.	Description	No. Req.	Index No.	Part No.	Description	No. Req.
Note: Index No.'s 1 - 25 Comprise the Shutter Motor Assembly, AS-232-80E				39	P-898-2A	Guide Bracket (Shutter Panel)	4
					WS8-7-510	Wood Screw	8
1	SP-100-85B	Extension Spring	1	40	P-249A	Guide Bracket (Shutter Panel)	3
2	P-2891-6A	Retaining Ring	1			Screw, #6x7/16" Lg. Sheet Metal	6
3	P-801-11B	Washer	1	41		Playfield Lighting Unit (See Index No.'s 42 - 44)	8
4	A-558-4A	Link Assembly	1	42		Screw, #6x3/8" Lg. Sheet Metal	16
5	P-801-207B	Washer	1	43	E-120-67A	Lamp Socket	8
6	LS832-10-510	Screw	1	44	E-125-2A	Lamp (#47)	8
7	PW 8-10	Washer	1	45	E-120-53A	Lamp Socket (Roll Over)	2
8	P-3392A	Support Bracket	2			Screw, #6x3/8" Lg. Sheet Metal	4
9	A-1448A	Crank Arm Assembly	1	46	SW-100-167A	Switch (Roll Over Button)	2
10	P-1637-15B	Roll Pin	1		P-137-3A	Switch Plate	2
11	LS832-6-510	Screw	3		WS3-12-110	Screw	4
12	P-2995-4A	Mounting Bracket	1	47	A-1746-12C	Contactor Strip & Bracket Assembly	1
13	S-231-331B	Bushing	1			Screw, #6x3/8" Lg. Sheet Metal	2
14	WS8-8-510	Wood Screw	6	48	A-1746-24A	Contactor Strip & Bracket Assembly	1
15	P-2608-7A	Motor Bracket	1			Screw, #6x3/8" Lg. Sheet Metal	2
16	E-119-379B	Motor	1	49	P-6665-207A	Baffle	1
17	AS-982-748A	Switch & Bracket Assembly	1			Screw, #6x7/16" Lg. Sheet Metal	4
18	LS-832-4-510	Screw	4	50	A-1746-31A	Contactor Strip & Bracket Assembly	2
19	P-2891-7A	Retaining Ring	3			Screw, #6x3/8" Lg. Sheet Metal	4
20		Cam Assembly (This Unit is broken down from the Motor side)	1	51	A-1746-22A	Contactor Strip & Bracket Assembly	1
	A-800-148A	Cam Assembly (Keyed on Motor Shaft)	1			Screw, #6x3/8" Lg. Sheet Metal	2
	P-436-114A	Cam	1	52	A-1746-13C	Contactor Strip & Bracket Assembly	1
	S-231-264B	Bushing (Between all Fibre Cams)	6			Screw, #6x3/8" Lg. Sheet Metal	3
	P-436-44A	Cam	1	53	A-1746-14C	Contractor Strip & Bracket Assembly	1
	P-436-45A	Cam	1			Screw #6 x 3/8" Lg. Sheet Metal	4
	P-436-43A	Cam	3	54	A-1746-15C	Contactor Strip & Bracket Assembly	1
	A-800-89A	Cam Assembly	1			Screw #6x3/8" Lg. Sheet Metal	5
21	SS 1032-4-1104	Set Screw	1	55	A-1746-16C	Contactor Strip & Bracket Assembly	1
22	SP-200-92B	Compression Spring	1			Screw, #16x3/8" Lg. Sheet Metal	6
23	P-801-207B	Washer	1	56	SW-100-28A	Switch (Ball Roll over)	1
24	P-3223-9A	Bracket	1	57		Screw, #6x7/16" Lg. Sheet Metal	2
25	LS832-5-510	Screw	1	58	E-120-53A	Lamp Socket (Circuit Balance)	4
26	CA-529-15C	Shutter	1		E-125-47A	Lamp (G.E. 1464)	4
27	P-3489-3B	Ball Baffle	1			Screw, #6x3/8" Lg. Sheet Metal	8
28	A-1268-6A	Bracket & Stud Assembly	1	59	P-3516-1A	Ball Deflector	1
29		#8 Lockwasher	9			Screw, #6x7/16" Lg. Sheet Metal	2
30	N 832-1110	Nut	9	60	P-801-176B	Washer	1
31	P-372A	Operating Bracket	1	61	P-801-11B	Washer	1
32	PW 8-10	Washer	9	62	M-254A	Hair Pin	1
33	MS 832-8-210	Flat Hd. Screw	9				
34	CA-638-85D	Panel	1				
	CA-1100-3B	Arch-Front	1				
	CA-1103A	Arch - Guide Strip	1				
	CA-1104C	Arch - Top	1				
35	AS-982-363A	Switch & Bracket Assembly (Operates against last Motor Shutter Cam)	1				
	ASW CZ-5A	Switch	1				
	P-126-309A	Bracket	1				
36	E-146-723A	"KK" Relay (Ball Lift Relay)	1				
	WS8-7-510	Wood Screw	2				
37	AS-982-704A	Switch & Bracket Assembly (Panel Shutter Switches)	1				
	WS8-7-510	Wood Screw	4				
38	P-898-1A	Guide Bracket (Shutter Panel)	3				
		Screw, #6x7/16" Lg. Sheet Metal	6				

# BACK CABINET & INSERT ASSEMBLY -PART I

## UNIT LAYOUT & IDENTIFICATION



ALWAYS GIVE MODEL AND PART NO. WHEN ORDERING SERVICE PARTS

# BACK CABINET & INSERT ASSEMBLY

*Bally*

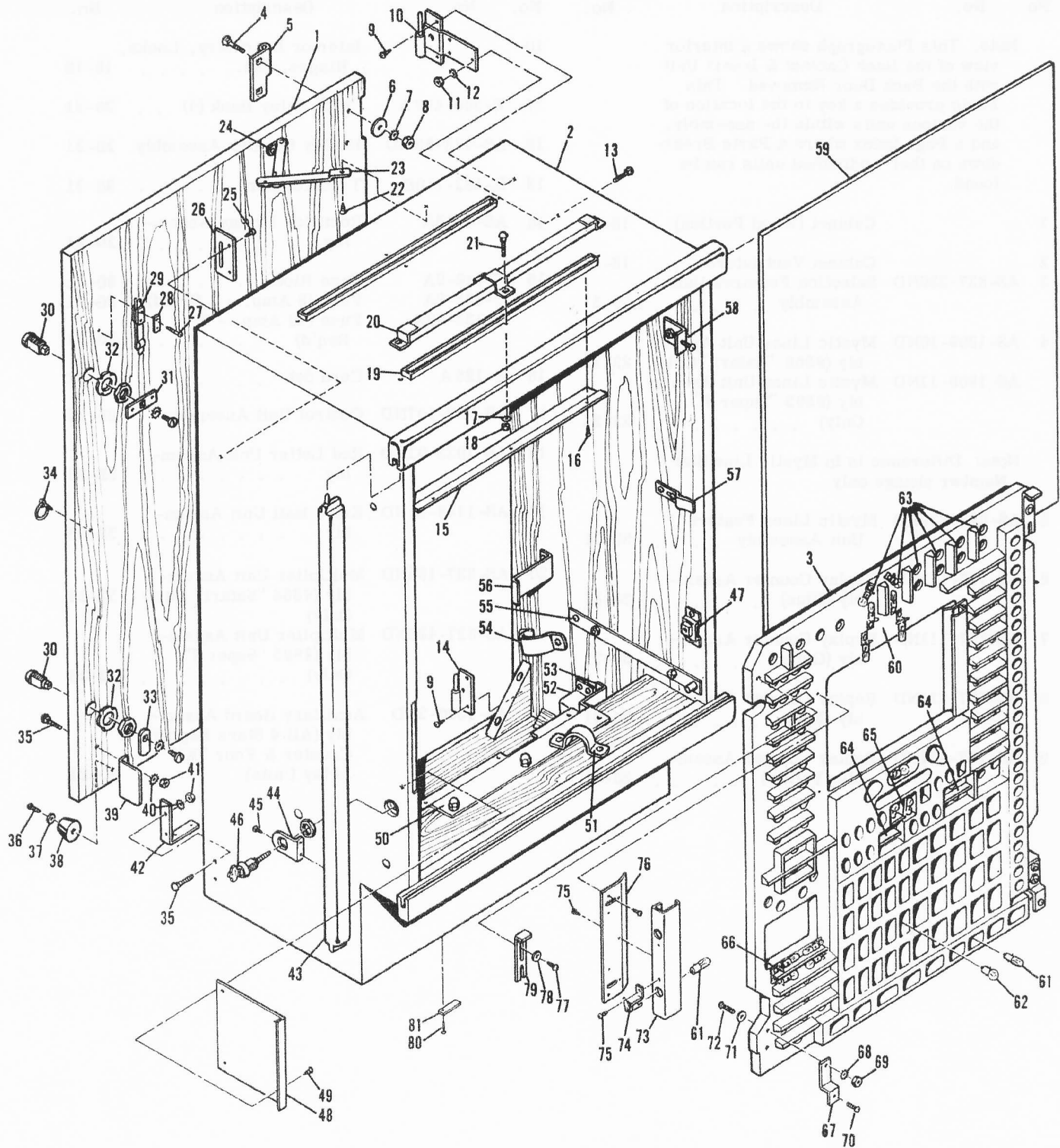
## -PART I-

Index No.	Part No.	Description	Page No.	Index No.	Part No.	Description	Page No.
<p>Note: This Photograph shows a interior view of the Back Cabinet &amp; Insert Unit with the Back Door Removed. This Photo provides a key to the location of the various units within the assembly, and a Page Index where a Parts Break-down on their individual units can be found.</p>				10		Interior Bracketry, Locks, Hinges, Etc. . . . .	18-19
				11	E-300-492 A	"KK" Relay Bank (4) . . .	20-21
				12	AS-473-35 ND	Replay Counter Assembly	20-21
				13	E-122-110B	Transformer . . . . .	20-21
1		Cabinet (Wood Portion)	18-19	14	AS-2513A	Rectifier Bridge Assem- bly . . . . .	20-21
2		Cabinet Ventilators . . .	18-19	15	E-148-9A	Fuse Block . . . . .	20-21
3	AS-827-236ND	Selection Features Unit Assembly . . . . .	30-31		E-133-8A	Fuse (8 Amp. - 1 Req'd)	20-21
					E-133-10A	Fuse (10 Amp. - 5 Req'd) . . . . .	20-21
4	AS-1809-10ND	Mystic Lines Unit Assem- bly (#868 "Safari" Only)	22-25	16	E-126 A	Cord Set . . . . .	20-21
	AS-1809-11ND	Mystic Lines Unit Assem- bly (#893 "Super 7" Only) . . . . .	22-25	17	AS-798-107ND	Control Unit Assembly	26-29
<p>Note: Difference is in Mystic Line Slat Number change only.</p>				18	AS-1022-91ND	Red Letter Unit Assem- bly . . . . .	32-33
5	AS-827-237ND	Mystic Lines Feature Unit Assembly . . . . .	30-31	19	AS-1148-31ND	Extra Ball Unit Assem- bly . . . . .	32-33
6	AS-797-111ND	Replay Counter Assem- bly (Blue) . . . . .	30-31	20	AS-827-194ND	Multiplier Unit Assem- bly (#868 "Safari" Only)	32-33
7	AS-797-111ND	Replay Counter Assem- bly (Green) . . . . .	30-31		AS-827-425ND	Multiplier Unit Assem- bly (#893 "Super 7" Only) . . . . .	32-33
8	AS-797-111ND	Replay Counter Assem- bly (Red) . . . . .	30-31	21	AS-2390-3ND	Auxiliary Board Assem- bly (All 4 Stars Replay Counter & Four "KK" Relay Units) . . . . .	20-21
9	AS-797-111ND	Replay Counter Assem- bly (Yellow) . . . . .	30-31				

ALWAYS GIVE MODEL AND PART NO. WHEN ORDERING SERVICE PARTS

# BACK CABINET & INSERT ASSEMBLY

## -PART II



ALWAYS GIVE MODEL AND PART NO. WHEN ORDERING SERVICE PARTS



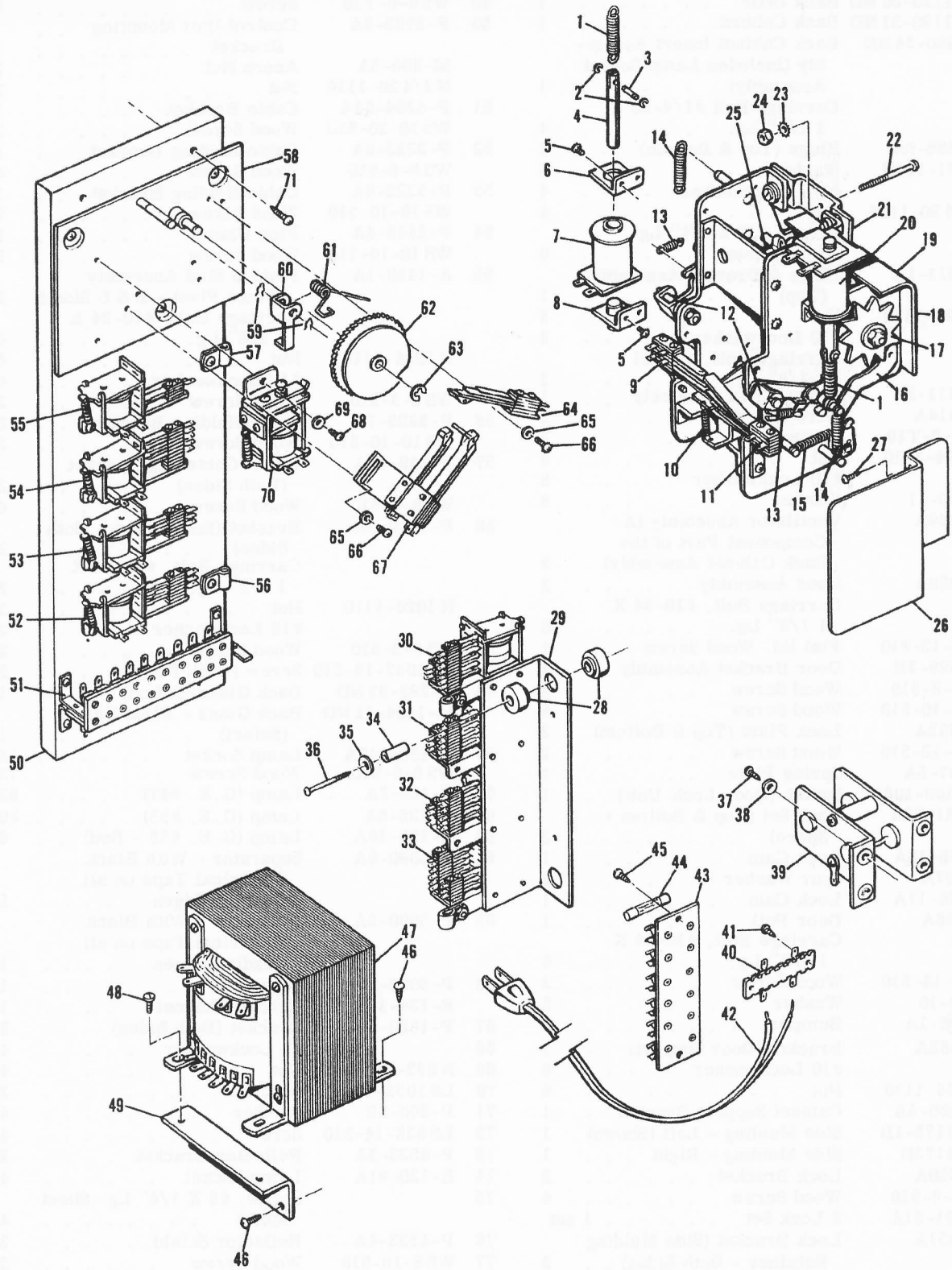
# BACK CABINET & INSERT ASSEMBLY

*Bally*

## -PART II

Index No.	Part No.	Description	No. Req.	Index No.	Part No.	Description	No. Req.
1	CA-1120-30ND	Back Door . . . . .	1	49	WS 6-6-T10	Screw . . . . .	4
2	CA-1120-31ND	Back Cabinet . . . . .	1	50	P-2983-5A	Control Unit Mounting Bracket . . . . .	1
3	A-3400-34ND	Back Cabinet Insert Assembly (Includes Lamp Socket Assembly) . . . . .	1		M-296-3A	Acorn Nut . . . . .	2
4		Carriage Bolt #1/4-20 X 1 1/4" Lg. . . . .	4	51	N 1/4 20-1110	Nut . . . . .	2
5	P-2335-9A	Hinge (Top & Bottom) . . . . .	2	52	P-6264-64A	Cable Bracket . . . . .	1
6	P-801-174B	Washer . . . . .	4		WS 10-10-510	Wood Screw . . . . .	2
7		#1/4 Lockwasher . . . . .	4	52	P-3223-8A	Cable Holding Bracket . . . . .	1
8	N 1/4 20-1110	Nut . . . . .	4		WS 8-8-510	Wood Screw . . . . .	4
9		Screw, #10 x 3/4" Lg. Sheet Metal . . . . .	6	53	P-3223-6A	Cable Holding Bracket . . . . .	1
10	A-1511-1A	Hinge & Bracket Assembly (Top) . . . . .	1		WS 10-10-510	Wood Screw . . . . .	2
11	N 1024-1110	Nut . . . . .	3	54	P-2449-4A	Pipe Clamp . . . . .	1
12		#10 Lockwasher . . . . .	3		WS 10-10-510	Wood Screw . . . . .	2
13		Carriage Bolt, #10-24 x 1-1/8" Lg. . . . .	3	55	A-1450-1A	Plate & Stud Assembly (Hinge Pivot - R & L Sides) . . . . .	2
14	A-1511-2A	Hinge & Pin Assembly . . . . .	1			Carriage Bolt, #10-24 X 1 1/8" Lg. . . . .	4
15	P-7414A	Wire Guard . . . . .	2		N 1024-1110	Nut . . . . .	4
16	WS 6-6-T10	Screw . . . . .	6			#10 Lockwasher . . . . .	4
17	N 1024-1110	Nut . . . . .	8	56	WS 8-8-510	Wood Screw . . . . .	2
18		#10 Lockwasher . . . . .	8		P-3223-7A	Cable Holding Bracket . . . . .	2
19	PW 10-11	Washer . . . . .	8		WS 10-10-510	Wood Screw . . . . .	2
	A-3329A	Ventilator Assembly (A Component Part of the Back Cabinet Assembly) . . . . .	2	57	P-249-12A	Insert Centering Bracket (Both Sides) . . . . .	2
20	A-3330A	Hood Assembly . . . . .	2		WS 8-8-510	Wood Screw . . . . .	4
21		Carriage Bolt, #10-24 X 1 1/8" Lg. . . . .	8	58	P-1819-3A	Bracket (Insert Stop - Both Sides) . . . . .	2
22	WS 6-12-910	Flat Hd. Wood Screw . . . . .	1			Carriage Bolt, #10-24 X 1 1/8" Lg. . . . .	2
23	A-1398-2B	Door Bracket Assembly . . . . .	1		N 1024-1110	Nut . . . . .	2
24	WS 8-8-510	Wood Screw . . . . .	2			#10 Lockwasher . . . . .	2
25	WS 8-10-510	Wood Screw . . . . .	4	59	WS 8-8-510	Wood Screw . . . . .	2
26	P-2892A	Lock Plate (Top & Bottom) . . . . .	2		LS 1032-18-510	Screw (Lock Down) . . . . .	2
27	WS 5-12-510	Wood Screw . . . . .	2		G-292-33ND	Back Glass (Safari) . . . . .	1
28	P-137-5A	Spring Plate . . . . .	1		M-1424-11ND	Back Glass - PlexiGlass (Safari) . . . . .	1
29	SW-100-106A	Switch (Door Lock Unit) . . . . .	1	60	E-120-147A	Lamp Socket . . . . .	13
30	M-281-25A	Lock Set (Top & Bottom + Spare) . . . . .	3		WS 6-6-510	Wood Screw . . . . .	13
31	P-758-16A	Lock Cam . . . . .	1	61	E-125-2A	Lamp (G.E. #47) . . . . .	82
32	M-607A	Spur Washer . . . . .	2	62	E-125-5A	Lamp (G.E. #55) . . . . .	89
33	P-758-17A	Lock Cam . . . . .	1	63	E-125-19A	Lamp (G.E. #55 - Red) . . . . .	6
34	M-628A	Door Pull . . . . .	1	64	P-5090-6A	Separator - With Black Electrical Tape on all Leading Edges . . . . .	2
35		Carriage Bolt, #10-24 X 1 1/8" Lg. . . . .	6	65	P-5090-5A	Separator - With Black Electrical Tape on all Leading Edges . . . . .	1
36	WS 8-14-510	Wood Screw . . . . .	2	66	P-5090-2A	Separator . . . . .	1
37	PW 8-10	Washer . . . . .	2		R-134-18A	Rubber Channel . . . . .	1
38	R-206-1A	Bumper . . . . .	2	67	P-1820-6A	Bracket (Both Sides) . . . . .	2
39	P-5462A	Bracket (Door Support) . . . . .	1	68		#8 Lockwasher . . . . .	4
40		#10 Lockwasher . . . . .	6	69	N 832-1110	Nut . . . . .	4
41	N 1024-1110	Nut . . . . .	6	70	LS 1032-10-511	Screw . . . . .	2
42	P-4260-3A	Cabinet Support Bracket . . . . .	1	71	P-800-6B	Washer . . . . .	4
43	CA-1173-1B	Side Molding - Left (Shown) . . . . .	1	72	LS 832-14-510	Screw . . . . .	4
	CA-1173B	Side Molding - Right . . . . .	1	73	P-4533-3A	Reflector Bracket . . . . .	2
44	P-2830A	Lock Bracket . . . . .	2	74	E-120-81A	Lamp Socket . . . . .	4
45	WS 8-8-910	Wood Screw . . . . .	4	75		Screw, #6 X 1/4" Lg. Sheet Metal . . . . .	4
46	M-281-31A	2 Lock Set . . . . .	1 set	76	P-4533-4A	Reflector Shield . . . . .	2
47	P-2831A	Lock Bracket (Side Molding Retainer - Both Sides) . . . . .	2	77	WS 8-10-510	Wood Screw . . . . .	2
	M-475-1A	Nut, #5/16-18 Speed Grip . . . . .	2	78	P-1158-4A	Spring Washer . . . . .	2
	WS 8-8-510	Wood Screw . . . . .	4	79	P-372-7A	Latch Bracket . . . . .	2
48	P-6665-73A	Baffle (Replay Register Armor) . . . . .	1	80		Nail #17 X 5/8" Lg. . . . .	2
				81	P-1973-36A	Plate (Cord Set Retainer) . . . . .	1

# BACK CABINET & INSERT ASSEMBLY -PART III



ALWAYS GIVE MODEL AND PART NO. WHEN ORDERING SERVICE PARTS

# BACK CABINET & INSERT ASSEMBLY

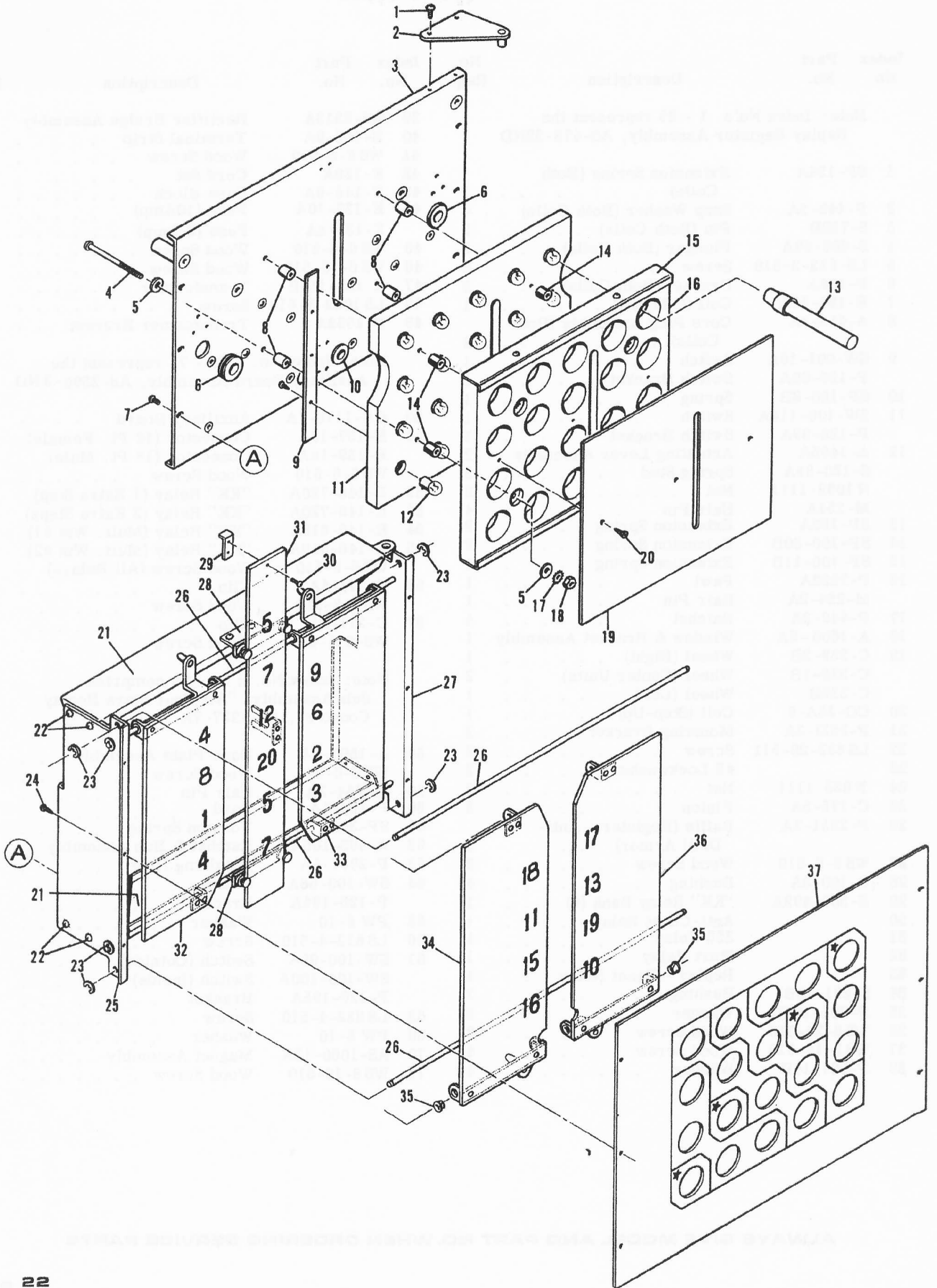
*Bally*

## -PART III

Index No.	Part No.	Description	No. Req.	Index No.	Part No.	Description	No. Req.
Note: Index No.'s 1 - 25 represent the Replay Register Assembly, AS-473-35ND				39	AS-2513A	Rectifier Bridge Assembly	1
1	SP-154A	Extension Spring (Both Coils)	1	40	E-103-9A	Terminal Strip	1
2	P-448-3A	Snap Washer (Both Coils)	4	41	WS 6-6-510	Wood Screw	2
3	S-739B	Pin (Both Coils)	2	42	E-126A	Cord Set	1
4	S-496-69A	Plunger (Both Coils)	2	43	E-148-9A	Fuse Block	1
5	LS-632-3-510	Screw	8	44	E-133-10A	Fuse (10Amp)	5
6	P-108A	Bracket (Both Coils)	2		E-133-8A	Fuse (8 Amp)	1
7	E-184-56A	Coil (Subtract)	1	45	WS 6-6-510	Wood Screw	2
8	A-613-2A	Core Plug Assembly (Both Coils)	2	46	WS 8-10-510	Wood Screw	4
9	SW-001-10A	Switch	1	47	E-122-110B	Transformer	1
	P-126-99A	Switch Bracket	1	48	LS 1032-5-610	Screw	2
10	SP-100-8B	Spring	1	49	P-4532A	Transformer Bracket	1
11	SW-100-114A	Switch	1	Note: Index No.'s 50 - 71 represent the Auxiliary Board Assembly, AS-2390-3 ND.			
	P-126-99A	Switch Bracket	1	50	CA-1176-1A	Auxiliary Board	1
12	A-1405A	Actuating Lever Assembly	2	51	E-137-18A	Connector (18 Pt. Female)	1
	S-130-88A	Spring Stud	2		E-139-18A	Connector (18 Pt. Male)	1
	N 1032-1111	Nut	2		WS 6-6-510	Wood Screw	4
	M-254A	Hair Pin	4	52	E-146-720A	"KK" Relay (1 Extra Step)	1
13	SP-163A	Extension Spring	2	53	E-146-720A	"KK" Relay (2 Extra Steps)	1
14	SP-100-80B	Extension Spring	2	54	E-146-618A	"KK" Relay (Mult. Win #1)	1
15	SP-100-11B	Extension Spring	1	55	E-146-619A	"KK" Relay (Mult. Win #2)	1
16	P-2522A	Pawl	1		WS 6-6-510	Wood Screw (All Relays)	8
	M-254-2A	Hair Pin	1	56	C-271-4A	Clip	1
17	P-449-2A	Ratchet	4		WS 8-8-510	Wood Screw	1
18	A-1606-6A	Window & Bracket Assembly	1	57	C-271-3A	Clip	1
19	C-339-2B	Wheel (Right)	1		WS-271-4A	Wood Screw	1
	C-339-1B	Wheel (Center Units)	2	Note: Index No.'s 58 - 70 comprise Sub-Assembly, "All Four Stars Replay Counter", AS-1237-7A			
	C-339B	Wheel (Left)	1	58	A-1591-1A	Base Plate Assembly	1
20	CO-26A-9	Coil (Step-Up)	1		WS 8-8-510	Wood Screw	3
21	P-2521-3A	Mounting Bracket	2	59	M-254-2A	Hair Pin	2
22	LS 832-20-511	Screw	2	60	P-138-4A	Pawl	1
23		#8 Lockwasher	2	61	SP-352A	Torsion Spring	1
24	N 832-1111	Nut	2	62	A-463-106A	Ratchet & Hub Assembly	1
25	C-175-5A	Pinion	3	63	P-2891-5A	Retaining Ring	1
26	P-2551-3A	Baffle (Register - Anti-Drill Armor)	1	64	SW-100-68A	Switch	1
27	WS 6-6-510	Wood Screw	2		P-126-184A	Bracket	1
28	R-100-3A	Bushing	4	65	PW 6-10	Washer	4
29	E-300-492A	"KK" Relay Bank (4)	1	66	LS 632-4-510	Screw	4
30		Anti-Cheat Relay	1	67	SW-100-99A	Switch (Outside)	1
31		25¢ Relay	1		SW-100-100A	Switch (Inside)	1
32		Start Relay	1		P-126-195A	Bracket	1
33		Replay - Reset Relay	1	68	LS 832-4-510	Screw	2
34	S-231-15B	Bushing	2	69	PW 8-10	Washer	2
35	P-801-107B	Washer	2	70	AS-1060-12A	Magnet Assembly	1
36	WS 8-24-510	Wood Screw	2	71	WS 8-16-510	Wood Screw	4
37	WS 8-14-510	Wood Screw	4				
38	P-801-14B	Washer	4				

ALWAYS GIVE MODEL AND PART NO. WHEN ORDERING SERVICE PARTS

# MYSTIC LINES UNIT-FRONT VIEW



# MYSTIC LINES UNIT-FRONT VIEW

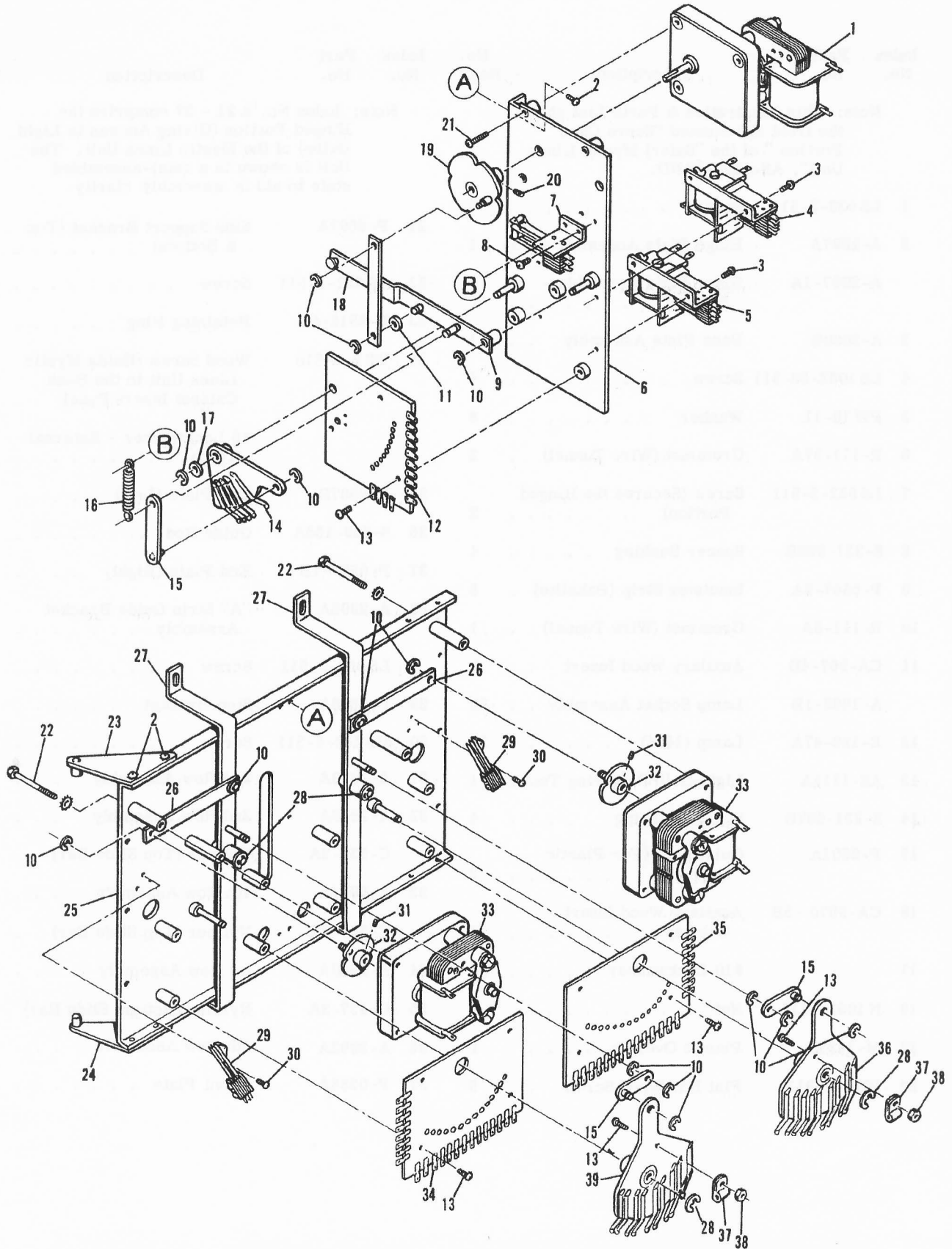
*Bally*

Index No.	Part No.	Description	No. Req.	Index No.	Part No.	Description	No. Req.
<p>Note: This Illustration &amp; Parts List shows the front illuminated "Score Card Portion" of the "Safari Mystic Lines Unit", AS-1809-10 ND.</p>				<p>Note: Index No.'s 21 - 37 comprise the Hinged Portion (Giving Access to Light Bulbs) of the Mystic Lines Unit. The Unit is shown in a semi-assembled state to aid in assembly clarity.</p>			
1	LS 632-3-511	Screw . . . . .	4	21	P-6598A	Side Support Bracket (Top & Bottom) . . . . .	2
2	A-2997A	Hinge Plate Assembly - Top	1	22	LS 632-3-511	Screw . . . . .	8
	A-2997-1A	Hinge Plate Assembly - Bottom . . . . .	1	23	P-6316-4A	Retaining Ring . . . . .	8
3	A-3000B	Base Plate Assembly . . . . .	1	24	WS 8-8-510	Wood Screw (Holds Mystic Lines Unit to the Back Cabinet Insert Panel . . . . .	6
4	LS 1032-38-511	Screw . . . . .	4			#8 Lockwasher - External Tooth . . . . .	6
5	PW 10-11	Washer . . . . .	8	25	P-6587B	End Plate (Left) . . . . .	1
6	R-111-37A	Grommet (Wire Tunnel) . . . . .	2	26	S-739-166A	Guide Rod . . . . .	4
7	LS 832-3-511	Screw (Secures the Hinged Portion) . . . . .	2	27	P-6587-1B	End Plate (Right) . . . . .	1
8	S-231-688B	Spacer Bushing . . . . .	4	28	A-2995A	"A" Strip Guide Bracket Assembly . . . . .	2
9	P-5447-2A	Insulator Strip (Bakelite) . . . . .	5		LS 832-3-511	Screw . . . . .	4
10	R-111-8A	Grommet (Wire Tunnel) . . . . .	1	29	P-6606A	Stop Bracket . . . . .	1
11	CA-967-4B	Auxiliary Wood Insert . . . . .	1	30	MS 440-4-511	Screw . . . . .	2
	A-1653-1B	Lamp Socket Assembly . . . . .	20	31	A-2990A	3rd Row Assembly . . . . .	
12	E-125-47A	Lamp (1464) . . . . .	20	32	A-2989A	2nd Row Assembly . . . . .	1
13	AS-1115A	Light Bulb Removing Tool . . . . .	1		C-537-3A	Nyliner (Top Slide Bar) . . . . .	2
14	S-231-687B	Spacer Bushing . . . . .	4	33	A-2991A	4th Row Assembly . . . . .	1
15	P-6601A	Guide Rail (For Plastic Overlay) . . . . .	2		C-537-3A	Nyliner (Top Slide Bar) . . . . .	2
16	CA-9670 -5B	Auxiliary Wood Insert - Overlay . . . . .	1	34	A-2988A	1st Row Assembly . . . . .	1
17		#10 Lockwasher . . . . .	4	35	C-537-3A	Nyliner (Bottom Slide Bar) . . . . .	4
18	N 1032-1111	Nut . . . . .	4	36	A-2992A	5th Row Assembly . . . . .	1
19	M-1423A	Plastic Overlay . . . . .	1	37	P-6588A	Front Plate . . . . .	1
20	WS 6-8-911	Flat Hd. Wood Screw . . . . .	3				

ALWAYS GIVE MODEL AND PART NO. WHEN ORDERING SERVICE PARTS



# MYSTIC LINES UNIT-REAR VIEW



ALWAYS GIVE MODEL AND PART NO. WHEN ORDERING SERVICE PARTS

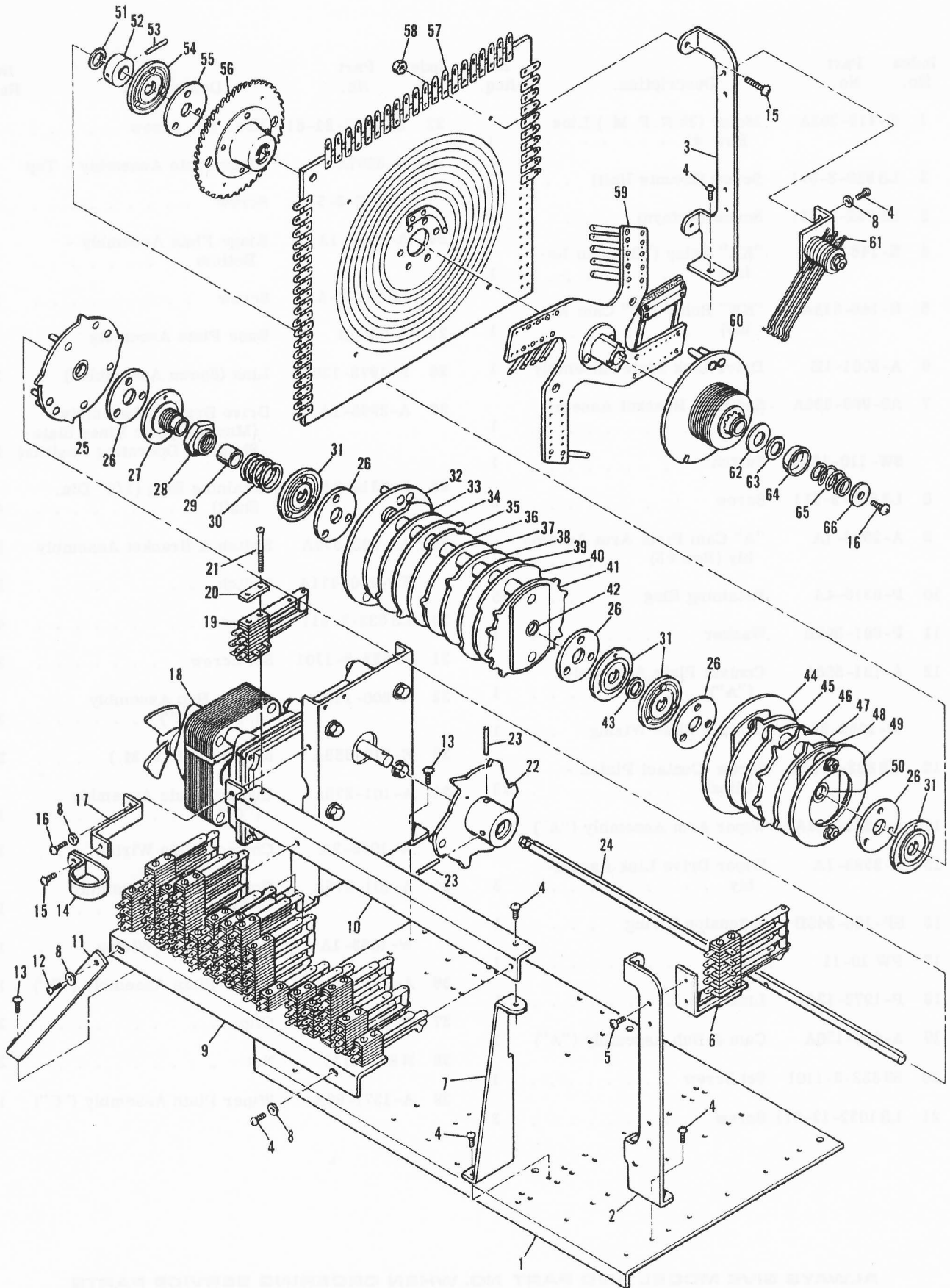
# MYSTIC LINES UNIT-REAR VIEW

*Bally*

Index No.	Part No.	Description	No. Req.	Index No.	Part No.	Description	No. Req.
1.	E-119-352A	Motor (25 R.P.M.) Line Row #3 . . . . .	1	22	LS 1032-24-811	Hex. Hd. Screw . . . . .	4
2	LS 832-3-511	Screw (Mounts Unit) . . . . .	3	23	A-2997A	Hinge Plate Assembly - Top	1
3	LS 632-3-511	Screw (Relays) . . . . .	4		LS 632-3-511	Screw . . . . .	2
4	E-146-618A	"KK" Relay ("B" Cam Relay) . . . . .	1	24	A-2997-1A	Hinge Plate Assembly - Bottom . . . . .	1
5	E-146-618A	"KK" Relay ("C" Cam Relay) . . . . .	1		LS 632-3-511	Screw . . . . .	2
6	A-3001-1B	Drive Link Plate Assembly	1	25	A-3000B	Base Plate Assembly . . . . .	1
7	AS-982-535A	Switch & Bracket Assembly . . . . .	1	26	P-1973-125A	Link (Shown Assembled) . . . . .	2
	SW-110-130A	Switch . . . . .	1	27	A-2998-1A	Drive Bracket Assembly (Moves Mystic Lines Slats-Shown in Operating Position)	2
8	LS 632-3-511	Screw . . . . .	2	28	P-6316-6A	Retaining Ring (1/4" Dia. Shaft) . . . . .	4
9	A-2996-1A	"A" Cam Pivot Arm Assembly (Row #3) . . . . .	1	29	AS-982-579A	Switch & Bracket Assembly	2
10	P-6316-4A	Retaining Ring . . . . .	15		SW-100-471A	Switch . . . . .	2
11	P-801-393B	Washer . . . . .	1	30	LS 632-3-511	Screw . . . . .	4
12	A-101-356A	Contact Plate Assembly ("A") . . . . .	1	31	SS 832-3-1101	Set Screw . . . . .	2
	W-1063-3A	Contact Plate Wiring . . . . .	1	32	A-800-131A	Cam & Hub Assembly ("B" & "C") . . . . .	2
13	MS 832-6-511	Screw (Contact Plates - Clips) . . . . .	13	33	E-119-353A	Motor (45 R.P.M.) . . . . .	2
14	A-1371-114A	Wiper Arm Assembly ("A")	1	34	A-101-275A	Contact Plate Assembly ("C") . . . . .	1
15	A-2999-1A	Wiper Drive Link Assembly . . . . .	3		W-1063-2A	Contact Plate Wiring . . . . .	1
16	SP-100-245B	Extension Spring . . . . .	1	35	A-101-276A	Contact Plate Assembly ("B") . . . . .	1
17	PW 10-11	Washer . . . . .	1		W-1063-1A	Contact Plate Wiring . . . . .	1
18	P-1973-124A	Link . . . . .	1	36	A-1371-95A	Wiper Plate Assembly ("B")	1
19	A-800-130A	Cam & Hub Assembly ("A")	1	37	C-271-2A	Clip . . . . .	2
20	SS 832-3-1101	Set Screw . . . . .	1	38	N 832-1111	Nut . . . . .	2
21	LS 1032-12-511	Screw . . . . .	3	39	A-1371-96A	Wiper Plate Assembly ("C")	1

ALWAYS GIVE MODEL AND PART NO. WHEN ORDERING SERVICE PARTS

# BACK CABINET CONTROL UNIT-PART I

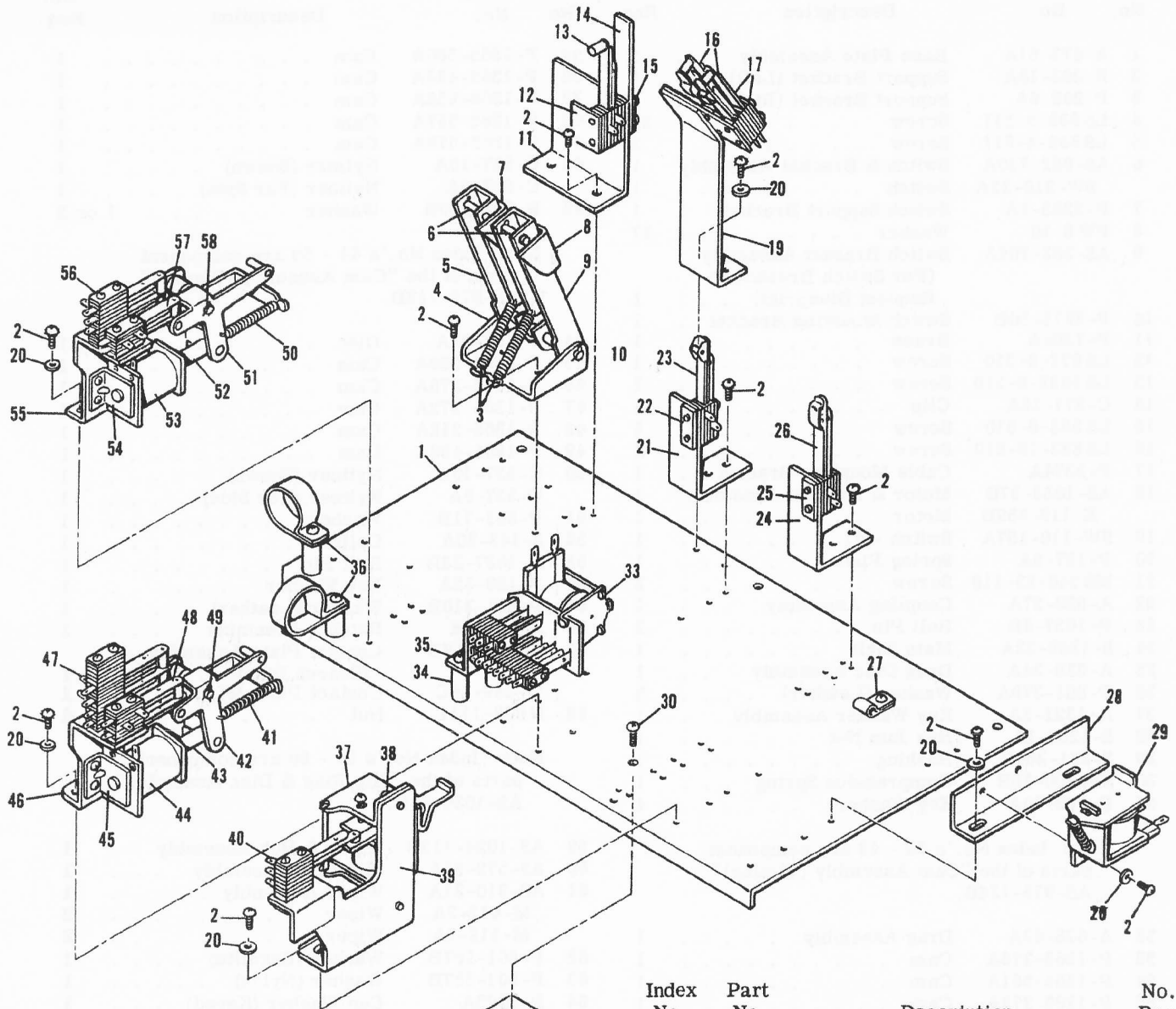


# BACK CABINET CONTROL UNIT-PART I *Bally*

Index No.	Part No.	Description	No. Req.	Index No.	Part No.	Description	No. Req.
1	A-473-61A	Base Plate Assembly . . .	1	37	P-1365-560A	Cam . . . . .	1
2	P-282-18A	Support Bracket (Left) . . .	1	38	P-1365-433A	Cam . . . . .	1
3	P-282-9A	Support Bracket (Right) . . .	1	39	P-1365-558A	Cam . . . . .	1
4	LS 832-5-511	Screw . . . . .	29	40	P-1365-557A	Cam . . . . .	1
5	LS 632-4-511	Screw . . . . .	2	41	P-1365-578A	Cam . . . . .	1
6	AS-982-750A	Switch & Bracket Assembly	1	42	C-537-10A	Nyliner (Shown) . . . . .	1
	SW-310-25A	Switch . . . . .	1		C-537-9A	Nyliner (Far Side) . . . . .	1
7	P-2283-1A	Switch Support Bracket . . .	1	43	P-801-100B	Washer . . . . .	1 or 2
8	PW 8-10	Washer . . . . .	17	Note: Index No.'s 44 - 50 are component parts of the "Cam Assembly (Replay)", AS-975-112B.			
9	AS-982-706A	Switch Bracket Assembly (For Switch Breakdown Request Blueprint) . . . . .	1	44	P-152-37A	Disc . . . . .	1
10	P-2275-10B	Switch Mounting Bracket . . .	1	45	P-1365-269A	Cam . . . . .	1
11	P-7208A	Brace . . . . .	1	46	P-1365-270A	Cam . . . . .	1
12	LS 832-8-510	Screw . . . . .	1	47	P-1365-272A	Cam . . . . .	1
13	LS 1032-6-510	Screw . . . . .	2	48	P-1365-218A	Cam . . . . .	1
14	C-271-16A	Clip . . . . .	1	49	P-1365-438A	Cam . . . . .	1
15	LS 832-6-510	Screw . . . . .	5	50	C-537-10A	Nyliner (Shown) . . . . .	1
16	LS 832-16-510	Screw . . . . .	2		C-537-9A	Nyliner (Far Side) . . . . .	1
17	P-2374A	Cable Mounting Bracket . . .	1	51	P-801-71B	Washer . . . . .	1
18	AS-1033-37B	Motor & Bracket Assembly	1	52	S-143-20A	Collar . . . . .	1
	E-119-359B	Motor . . . . .	1	53	P-1637-23B	Roll Pin . . . . .	1
19	SW-110-157A	Switch - #1 . . . . .	1	54	P-163-32A	Key Washer . . . . .	1
20	P-137-5A	Spring Plate . . . . .	1	55	P-801-310B	Washer (Leather) . . . . .	1
21	MS 540-22-110	Screw . . . . .	2	56	A-223-4A	Ratchet Assembly . . . . .	1
22	A-628-27A	Coupling Assembly . . . . .	1	57	A-234-267B	Contact Plate Assembly (Search Disc) . . . . .	1
23	P-1637-8B	Roll Pin . . . . .	2		W-849-14C	Contact Plate Wiring . . . . .	1
24	S-1289-32A	Main Shaft . . . . .	1	58	N 832-1111	Nut . . . . .	4
25	A-628-24A	Drag Disc Assembly . . . . .	1	Note: Index No.'s 59 - 60 are component parts of the "Slip Ring & Disc Assembly", AS-1034-74B.			
26	P-801-379A	Washer (Leather) . . . . .	5	59	AS-1024-113B	Wiper & Hub Assembly . . . . .	1
27	A-1321-3A	Key Washer Assembly . . . . .	1	60	AS-579-35A	Slip Ring Assembly . . . . .	1
28	S-1286-1A	Hex Jam Nut . . . . .	1	61	AS-910-21A	Wiper Assembly . . . . .	1
29	S-231-260B	Bushing . . . . .	1		M-412-2A	Wiper . . . . .	3
30	SP-200-75B	Compression Spring . . . . .	1		M-412-7A	Wiper . . . . .	2
31	P-163-30A	Key Washer . . . . .	4	62	P-801-167B	Washer (Bakelite) . . . . .	1
Note: Index No.'s 32 - 42 are component parts of the "Cam Assembly (Timing)", AS-975-124B.				63	P-801-357B	Washer (Nylon) . . . . .	1
32	A-628-42A	Drag Assembly . . . . .	1	64	P-2293A	Cup Washer (Keyed) . . . . .	1
33	P-1365-276A	Cam . . . . .	1	65	SP-230A	Compression Spring . . . . .	1
34	P-1365-561A	Cam . . . . .	1	66	P-800-6B	Washer . . . . .	1
35	P-1365-275A	Cam . . . . .	1				
36	P-1365-273A	Cam . . . . .	1				

**ALWAYS GIVE MODEL AND PART NO. WHEN ORDERING SERVICE PARTS**

# BACK CABINET CONTROL UNIT - PART II



Index No.	Part No.	Description	No. Req.
1	A-473-61A	Base Plate Assembly . . .	1
2	LS 832-5-571	Screw . . . . .	29
<p>Note: Index No.'s 3 - 10 are component parts of the "Drag Arm Assembly", AS-1170B.</p>			
3	SP-100-11B	Extension Spring . . . . .	2
4	P-2440A	Mounting Bracket . . . . .	1
5	P-2439-1A	Drag Arm . . . . .	1
6	S-739-42B	Pin (Both Arms) . . . . .	2
	M-254-1A	Hair Pin . . . . .	4
7	P-2438A	Drag Arm Stop . . . . .	1
	LS 832-3-510	Screw (Both Arm Stops) . . .	4

**ALWAYS GIVE MODEL AND PART NO. WHEN ORDERING SERVICE PARTS**



# BACK CABINET CONTROL UNIT - PART II

*Bally*

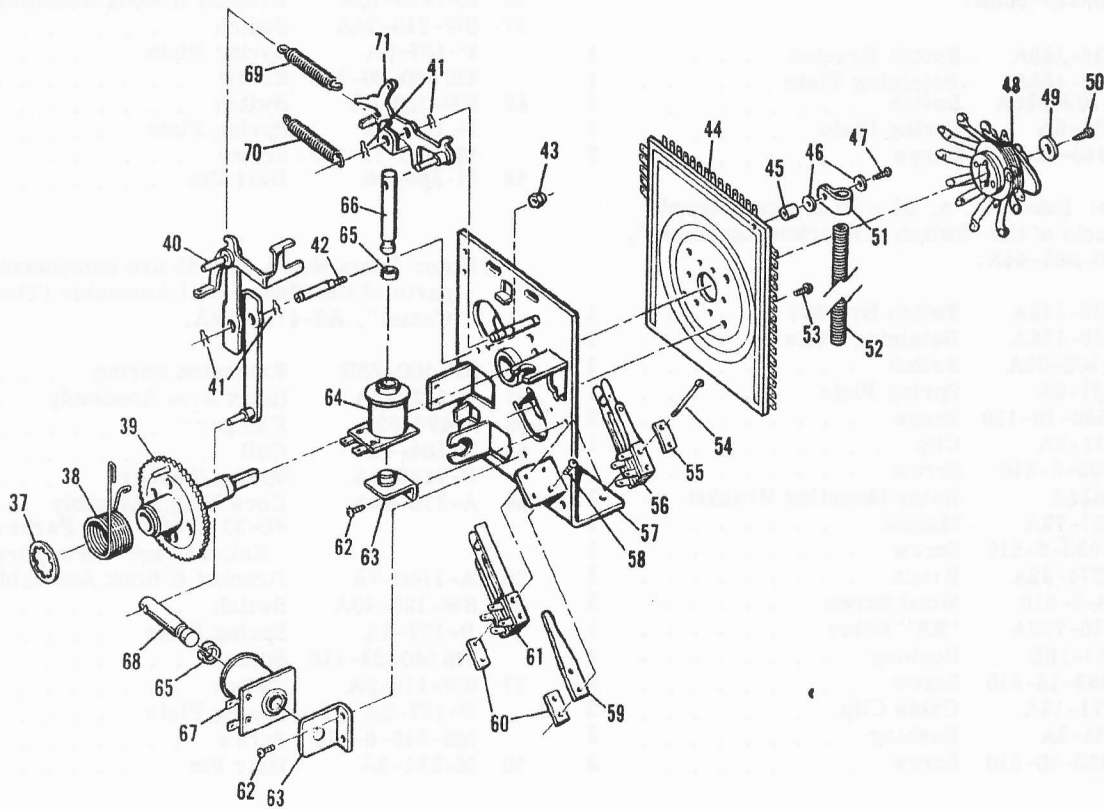
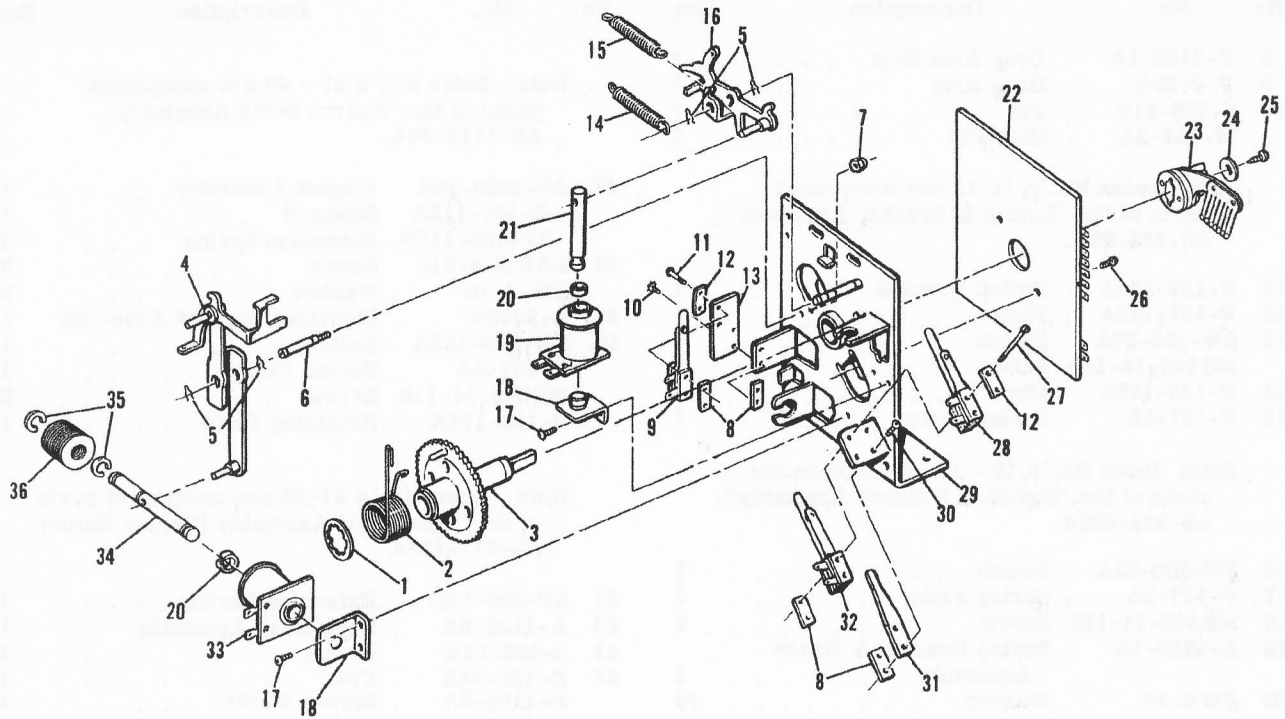
Index No.	Part No.	Description	No. Req.	Index No.	Part No.	Description	No. Req.
8	P-2438-1A	Drag Arm Stop . . . . .	1				
9	P-2439A	Drag Arm . . . . .	1				
10	S-739-41B	Pin . . . . .	1				
	M-254-2A	Hair Pin . . . . .	2				
<p>Note: Index No.'s 11-15 are component parts of the "Switch &amp; Bracket Assembly", AS-982-98A.</p>				<p>Note: Index No.'s 37 - 40 are component parts of the "Search Index Assembly", AS-1114-30A.</p>			
11	P-126-224A	Switch Bracket . . . . .	1	37	AS-1060-10A	Magnet Assembly . . . . .	1
12	P-126-143A	Plate . . . . .	1		E-184-112A	Solenoid . . . . .	1
13	SW-100-27A	Switch . . . . .	1		SP-100-115B	Extension Spring . . . . .	1
	MS 540-14-110	Screw . . . . .	2	38	LS 832-4-510	Screw . . . . .	2
14	P-126-155A	Plate . . . . .	1		PW-8-10	Washer . . . . .	2
15	P-137-5A	Spring Plate . . . . .	1	39	A-2362A	Mounting Bracket Assembly	1
<p>Note: Index No.'s 16 - 19 are components parts of the "Switch &amp; Bracket Assembly", AS-982-620A.</p>				40	SW-110-163A	Switch . . . . .	1
16	SW-200-68A	Switch . . . . .	2		P-137-5A	Spring Plate . . . . .	1
17	P-137-5A	Spring Plate . . . . .	2		MS 540-14-110	Screw . . . . .	2
18	MS 540-14-110	Screw . . . . .	4		P-126-154A	Retaining Plate . . . . .	1
19	A-2959-1A	Switch Bracket & Brace Assembly . . . . .	1		P-137-5A	Spring Plate . . . . .	1
20	PW 8-10	Washer . . . . .	10		MS 540-11-110	Screw . . . . .	2
<p>Note: Index No.'s 21 - 23 are components parts of the "Switch &amp; Bracket Assembly", AS-982-568A.</p>				<p>Note: Index No.'s 41-49 are component parts of the "Index Coil Assembly (Replay Cams)" AS-472-135A.</p>			
21	P-126-148A	Switch Bracket . . . . .	1	41	SP-100-23B	Extension Spring . . . . .	1
22	P-126-154A	Retaining Plate . . . . .	1	42	A-1138-6A	Index Arm Assembly . . . . .	1
23	SW-100-390A	Switch . . . . .	1	43	S-496-12A	Plunger . . . . .	1
	P-137-5A	Spring Plate . . . . .	1	44	E-184-74A	Coil . . . . .	1
	MS 540-10-110	Screw . . . . .	2		P-1158-6A	Spring Washer . . . . .	1
<p>Note: Index No.'s 24 - 26 are component parts of the "Switch &amp; Bracket Assembly", AS-982-44A.</p>				45	A-613-83A	Core Plug Assembly #8-32 X 1/4" Lg. Parker Kalon Swage Form Screw	2
24	P-126-148A	Switch Bracket . . . . .	1		A-1140-10A	Bracket & Hook Assembly	1
25	P-126-154A	Retaining Plate . . . . .	1	46	A-1140-10A	Bracket & Hook Assembly	1
26	SW-100-66A	Switch . . . . .	1		SW-210-74A	Switch . . . . .	1
	P-137-5A	Spring Plate . . . . .	1		P-137-5A	Spring Plate . . . . .	1
	MS 540-10-110	Screw . . . . .	2		MS 540-30-110	Screw . . . . .	2
27	C-271-2A	Clip . . . . .	1	48	SW-110-9A	Switch . . . . .	1
	LS 832-6-510	Screw . . . . .	1		P-137-5A	Spring Plate . . . . .	1
28	P-4525A	Relay Mounting Bracket . . . . .	1		MS 540-11-110	Screw . . . . .	2
29	E-101-72A	Magnet . . . . .	1	49	M-254-2A	Hair Pin . . . . .	1
30	LS 1032-6-510	Screw . . . . .	1	<p>Note: Index No.'s 50 - 58 are component parts of the "Index Coil Assembly (Timing Cams)", AS-472-119A.</p>			
31	P-2374-22A	Brace . . . . .	1	50	SP-100-23B	Extension Spring . . . . .	1
32	WS 8-8-510	Wood Screw . . . . .	2	51	A-1138-6A	Index Arm Assembly . . . . .	1
33	E-146-722A	"KK" Relay . . . . .	1	52	S-496-62A	Plunger . . . . .	1
34	S-231-10B	Bushing . . . . .	2	53	E-184-41A	Coil . . . . .	1
35	LS 832-18-510	Screw . . . . .	2		P-1158-6A	Spring Washer . . . . .	1
36	C-271-18A	Cable Clip . . . . .	2	54	A-613-83A	Core Plug Assembly #8-32 X 1/4" Lg. Parker - Kalon Swage Form Screw	2
	S-231-2A	Bushing . . . . .	2		A-1140-7A	Bracket & Hook Assembly	1
	LS 832-10-510	Screw . . . . .	2	55	A-1140-7A	Bracket & Hook Assembly	1
					SW-120-40A	Switch . . . . .	1
					P-137-5A	Spring Plate . . . . .	1
					MS 540-22-110	Screw . . . . .	1
				57	SW-110-9A	Switch . . . . .	1
					P-137-5A	Spring Plate . . . . .	1
					MS-540-6-110	Screw . . . . .	2
				58	M-254-2A	Hair Pin . . . . .	1

ALWAYS GIVE MODEL AND PART NO. WHEN ORDERING SERVICE PARTS

*Bally*

# BACK CABINET STEPPING UNITS - PART I

REPLAY COUNTER UNIT - MYSTIC LINES FEATURE UNIT  
- SELECTION FEATURE UNIT



ALWAYS GIVE MODEL AND PART NO. WHEN ORDERING SERVICE PARTS

# BACK CABINET STEPPING UNITS - PART I *Bally*

## REPLAY COUNTER UNIT-MYSTIC LINES FEATURE UNIT -SELECTION FEATURE UNIT

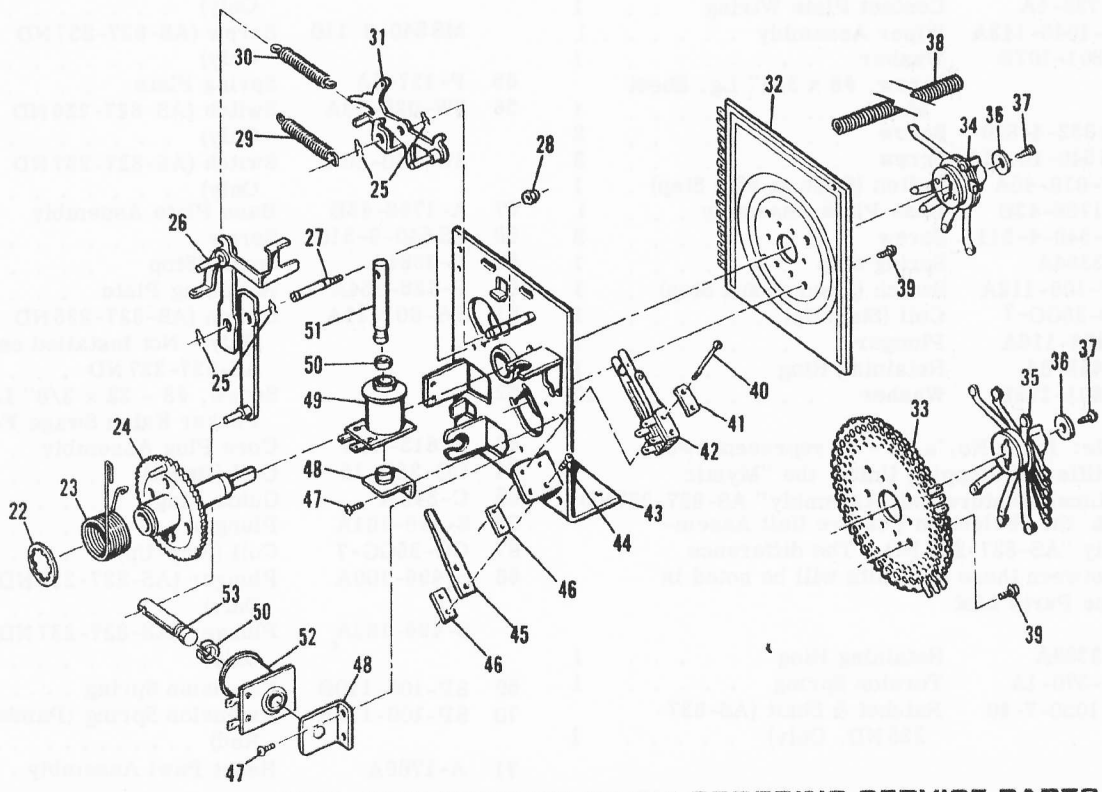
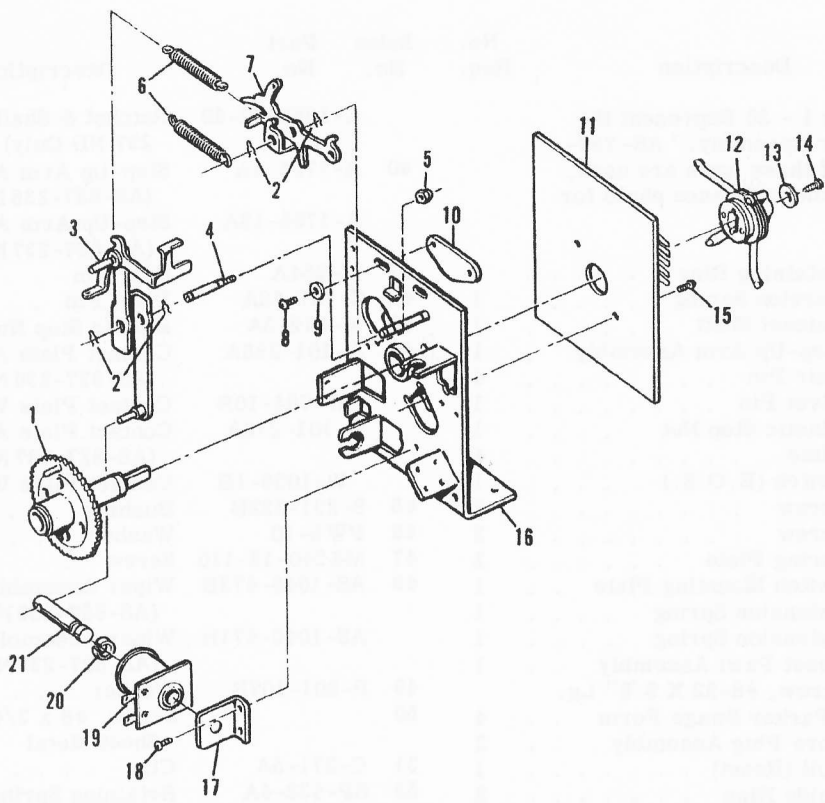
Index No.	Part No.	Description	No. Req.	Index No.	Part No.	Description	No. Req.	
<p>Note: Index No.'s 1 - 36 Represent the "Replay Counter Assembly," AS- 797-111ND. Four of these units are used, please refer to the reference photo for their locations.</p>					C-1060-12-49	Ratchet & Shaft (AS-827-237 ND Only)	1	
1	P-3389A	Retaining Ring	1	40	A-1765-4A	Step-Up Arm Assembly (AS-827-236 ND Only)	1	
2	SP-370A	Torsion Spring	1		A-1765-13A	Step-Up Arm Assembly (AS-827-237 ND Only)	1	
3	C-100B	Ratchet Shaft	1	41	M-254A	Hair Pin	4	
4	A-1765-8A	Step-Up Arm Assembly	1	42	S-737-48A	Pivot Pin	1	
5	M-254A	Hair Pin	4	43	M-319-3A	Elastic Stop Nut	1	
6	S-737-48A	Pivot Pin	1	44	A-101-288A	Contact Plate Assembly (AS-827-236 ND Only)	1	
7	M-319-3A	Elastic Stop Nut	1		W-764-10B	Contact Plate Wiring	1	
8	P-126-154A	Plate	4		A-101-272A	Contact Plate Assembly (AS-827-237 ND Only)	1	
9	SW-100-149A	Switch (E.O.S.)	1		W-1056-1B	Contact Plate Wiring	1	
10	LS 540-5-110	Screw	2	45	S-231-332B	Bushing	1	
11	MS 540-8-110	Screw	2	46	PW 5-10	Washer	2	
12	P-137-5A	Spring Plate	2	47	MS 540-12-110	Screw	1	
13	P-126-247A	Switch Mounting Plate	1	48	AS-1046-473B	Wiper Assembly (AS-827-236 ND Only)	1	
14	SP-100-120B	Extension Spring	1		AS-1046-471B	Wiper Assembly (AS-827-237 ND Only)	1	
15	SP-100-118B	Extension Spring	1	49	P-801-107B	Washer	1	
16	A-1766A	Reset Pawl Assembly	1	50		Screw, #8 x 3/4" Lg. Sheet Metal	1	
17		Screw, #8-32 X 3/8" Lg. Parker Swage Form	4	51	C-271-5A	Clip	1	
18	A-613-32A	Core Plug Assembly	2	52	SP-433-4A	Retaining Spring	1	
19	CO-28R-15	Coil (Reset)	1	53	MS 832-4-810	Screw	2	
20	C-342A	Guide Ring	2	54	MS 540-16-110	Screw (AS-827-236 ND Only)	2	
21	S-496-101A	Plunger	1		MS 540-8-110	Screw (AS-827-237 ND Only)	2	
22	A-1573-12A	Contact Plate Assembly	1	55	P-137-5A	Spring Plate	1	
	W-728-5A	Contact Plate Wiring	1	56	SW-020-13A	Switch (AS-827-236 ND Only)	1	
23	AS-1046-143A	Wiper Assembly	1		SW-010-46A	Switch (AS-827-237 ND Only)	1	
24	P-801-107B	Washer	1	57	A-1768-43B	Base Plate Assembly	1	
25		Screw, #8 x 3/4" Lg. Sheet Metal	1	58	LS 540-5-510	Screw	2	
26	MS 832-4-810	Screw	2	59	P-3384A	Spring Stop	1	
27	MS 540-16-110	Screw	2	60	P-126-154A	Retaining Plate	2	
28	SW-010-46A	Switch (Open at 96th Step)	1	61	SW-001-11A	Switch (AS-827-236 ND Only - Not Installed on AS-827-237 ND)	1	
29	A-1768-43B	Base Plate Assembly	1	62		Screw, #8 - 32 x 3/8" Lg. Parker Kalon Swage Form	4	
30	LS-540-4-511	Screw	2	63	A-613-32A	Core Plug Assembly	2	
31	P-3384A	Spring Stop	1	64	CO-28R-15	Coil (Reset)	1	
32	SW-100-112A	Switch (Open at 2nd Step)	1	65	C-342 A	Guide Ring	2	
33	CO-25GG-7	Coil (Step-Up)	1	66	S-496-101A	Plunger	1	
34	S-496-116A	Plunger	1	67	CO-25GG-7	Coil (Step-Up)	1	
35	P-448-6A	Retaining Ring	1	68	S-496-100A	Plunger (AS-827-236 ND Only)	1	
36	P-801-172B	Washer	10		S-496-162A	Plunger (AS-827-237 ND Only)	1	
<p>Note: Index No.'s 37 - 71 represent two different Stepping Units; the "Mystic Lines Feature Unit Assembly" AS-827-237ND &amp; the "Selection Feature Unit Assembly" AS-827-236 ND. The difference between these two units will be noted in the Parts List.</p>					69	SP-100-120B	Extension Spring	1
37	P-3389A	Retaining Ring	1	70	SP-100-125B	Extension Spring (Painted Red)	1	
38	SP-370-1A	Torsion Spring	1	71	A-1766A	Reset Pawl Assembly	1	
39	C-1050-7-40	Ratchet & Shaft (AS-827-236 ND. Only)	1					

ALWAYS GIVE MODEL AND PART NO. WHEN ORDERING SERVICE PARTS



# BACK CABINET STEPPING UNITS - PART II

MULTIPLIER UNIT-RED LETTER UNIT-EXTRA BALL UNIT



ALWAYS GIVE MODEL AND PART NO. WHEN ORDERING SERVICE PARTS

# BACK CABINET STEPPING UNITS - PART II *Bally*

## MULTIPLIER UNIT-RED LETTER UNIT-EXTRA BALL UNIT

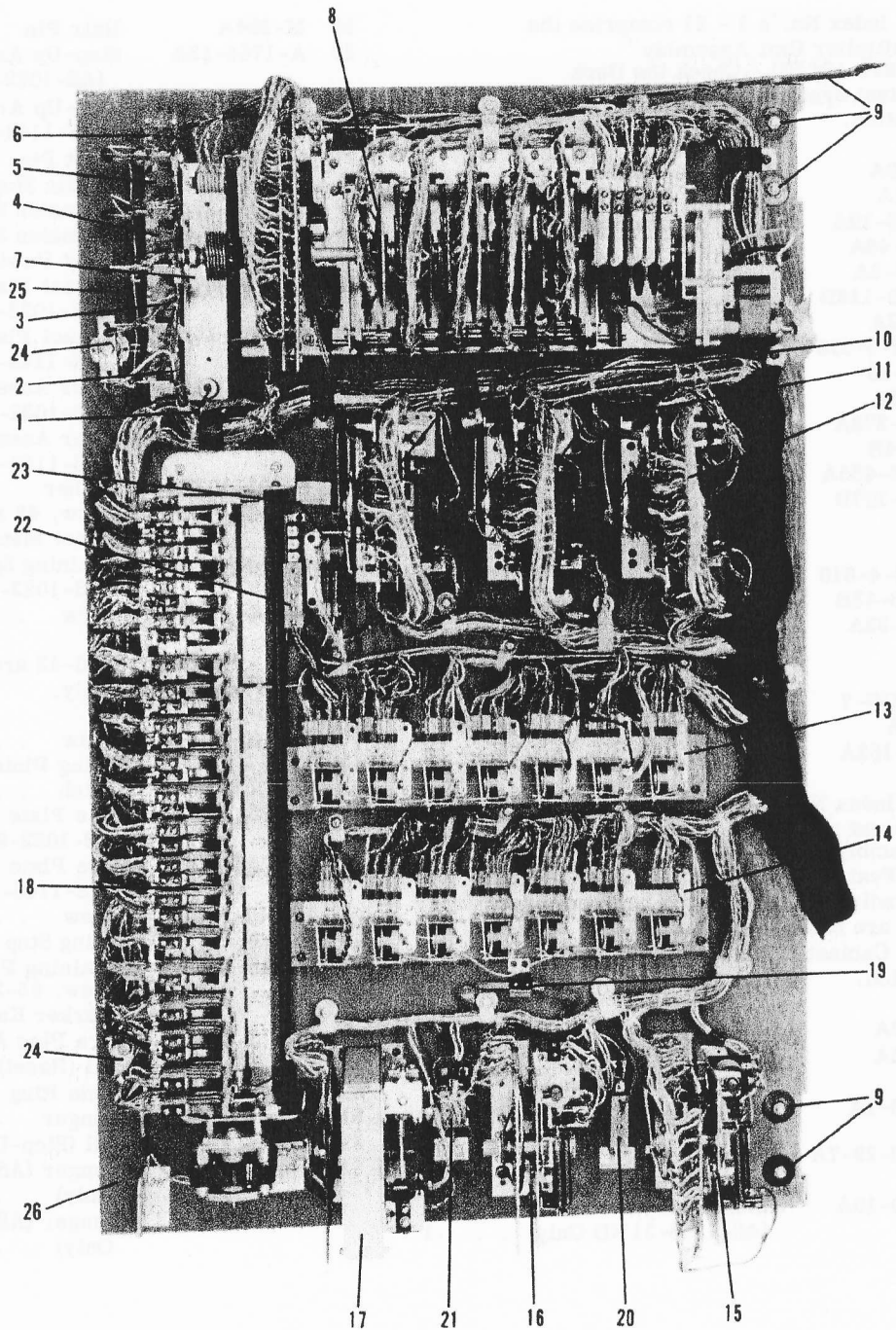
Index No.	Part No.	Description	No. Req.	Index No.	Part No.	Description	No. Req.
<p>Note: Index No.'s 1 - 21 comprise the "Multiplier Unit Assembly" AS-827-194 ND. Check the Back Cabinet Systems Layout Photo for location.</p>				25	M-254A	Hair Pin . . . . .	4
1	C-1060A	Ratchet & Shaft . . . . .	1	26	A-1765-13A	Step-Up Arm Assembly (AS-1022-91 ND Only) . . . . .	1
2	M-254A	Hair Pin . . . . .	4		A-1765-4A	Step-Up Arm Assembly (AS-1148-31 ND Only) . . . . .	1
3	A-1765-19A	Step-Up Arm Assembly . . . . .	1	27	S-737-48A	Pivot Pin . . . . .	1
4	S-737-48A	Pivot Pin . . . . .	1	28	M-319-3A	Elastic Stop Nut . . . . .	1
5	M-319-3A	Elastic Stop Nut . . . . .	1	29	SP-100-125B	Extension Spring (Red) . . . . .	1
6	SP-100-113B	Extension Spring . . . . .	2	30	SP-100-120B	Extension Spring . . . . .	1
7	P-3382A	Reset Pawl . . . . .	1	31	A-1766A	Reset Pawl Assembly . . . . .	1
8	MS 832-5-510	Screw . . . . .	2	32	A-101-267A	Contact Plate Assembly (AS-1022-91 ND Only) . . . . .	1
9	PW-8-10	Washer . . . . .	2	33	A-1402-192A	Contact Plate Assembly (AS-1148-31 ND Only) . . . . .	1
10	P-3386A	Stop Plate . . . . .	1	34	AS-1046-443A	Wiper Assembly (AS-1022-91 ND Only) . . . . .	1
11	A-101-278A	Contact Plate . . . . .	1	35	AS-1046-442A	Wiper Assembly (AS-1148-31 ND Only) . . . . .	1
	W-1064B	Contact Plate Wiring . . . . .	1	36	P-801-107B	Washer . . . . .	1
12	A-1046-455A	Wiper Assembly . . . . .	1	37		Screw, #8 x 3/4" Lg. Sheet Metal . . . . .	1
13	P-801-107B	Washer . . . . .	1	38	SP-433-13A	Retaining Spring (AS-1022-91 ND Only) . . . . .	1
14		Screw, #8 x 3/4" Lg. Sheet Metal . . . . .	1	39	MS 832-4-810	Screw . . . . .	2
15	MS 832-4-810	Screw . . . . .	2	<p>Note: Index No.'s 40-42 are used on AS-1022-91 ND Only.</p>			
16	A-1768-43B	Base Plate Assembly . . . . .	1	40	MS 540-10-110	Screw . . . . .	2
17	A-613-33A	Core Plug Assembly . . . . .	1	41	P-137-5A	Spring Plate . . . . .	1
18		Screw, 8-32 x 3/8" Lg. Parker Kalon Swage Form . . . . .	2	42	SW-001-18A	Switch . . . . .	1
19	CO-25GG-7	Coil . . . . .	1	43	A-1768B	Base Plate Assembly (AS-1022-91 ND Only) . . . . .	1
20	C-342A	Guide Ring . . . . .	1		A-1768-43B	Base Plate Assembly (AS-1148-31 ND Only) . . . . .	1
21	S-496-162A	Plunger . . . . .	1	44	LS 540-5-510	Screw . . . . .	2
<p>Note: Index No.'s 22 - 53 represent two different units; the "Red Letter Unit Assembly" AS-1022-91 ND, &amp; the Extra Ball Feature Assembly" AS-1148-31 ND. The individual differences between these units are noted in the Parts List. Check Back Cabinet Systems Layout Photo for location.</p>				45	P-3384A	Spring Stop . . . . .	1
22	P-3389A	Retaining Ring . . . . .	1	46	P-126-154A	Retaining Plate . . . . .	1 or 2
23	SP-370A	Torsion Spring (AS-1022-91 ND Only) . . . . .	1	47		Screw, #8-32 x 3/8" Lg. Parker Kalon Swage Form . . . . .	4
	SP-370-1A	Torsion Spring (AS-1148-31 ND Only) . . . . .	1	48	A-613-32A	Core Plug Assembly . . . . .	2
24	C-1060-29-7A	Ratchet & Shaft (AS-1022-91 ND Only) . . . . .	1	49	CO-28R-15	Coil (Reset) . . . . .	1
	C-1050-10A	Ratchet & Shaft (AS-1148-31 ND Only) . . . . .	1	50	C-342A	Guide Ring . . . . .	2
				51	S-496-101A	Plunger . . . . .	1
				52	CO-25GG-7	Coil (Step-Up) . . . . .	1
				53	S-496-162A	Plunger (AS-1022-91 ND Only) . . . . .	1
					S-496-100A	Plunger (AS-1148-31 ND Only) . . . . .	1

ALWAYS GIVE MODEL AND PART NO. WHEN ORDERING SERVICE PARTS



# BACK DOOR ASSEMBLY

## UNIT LAYOUT & IDENTIFICATION



ALWAYS GIVE MODEL AND PART NO. WHEN ORDERING SERVICE PARTS

# BACK DOOR ASSEMBLY

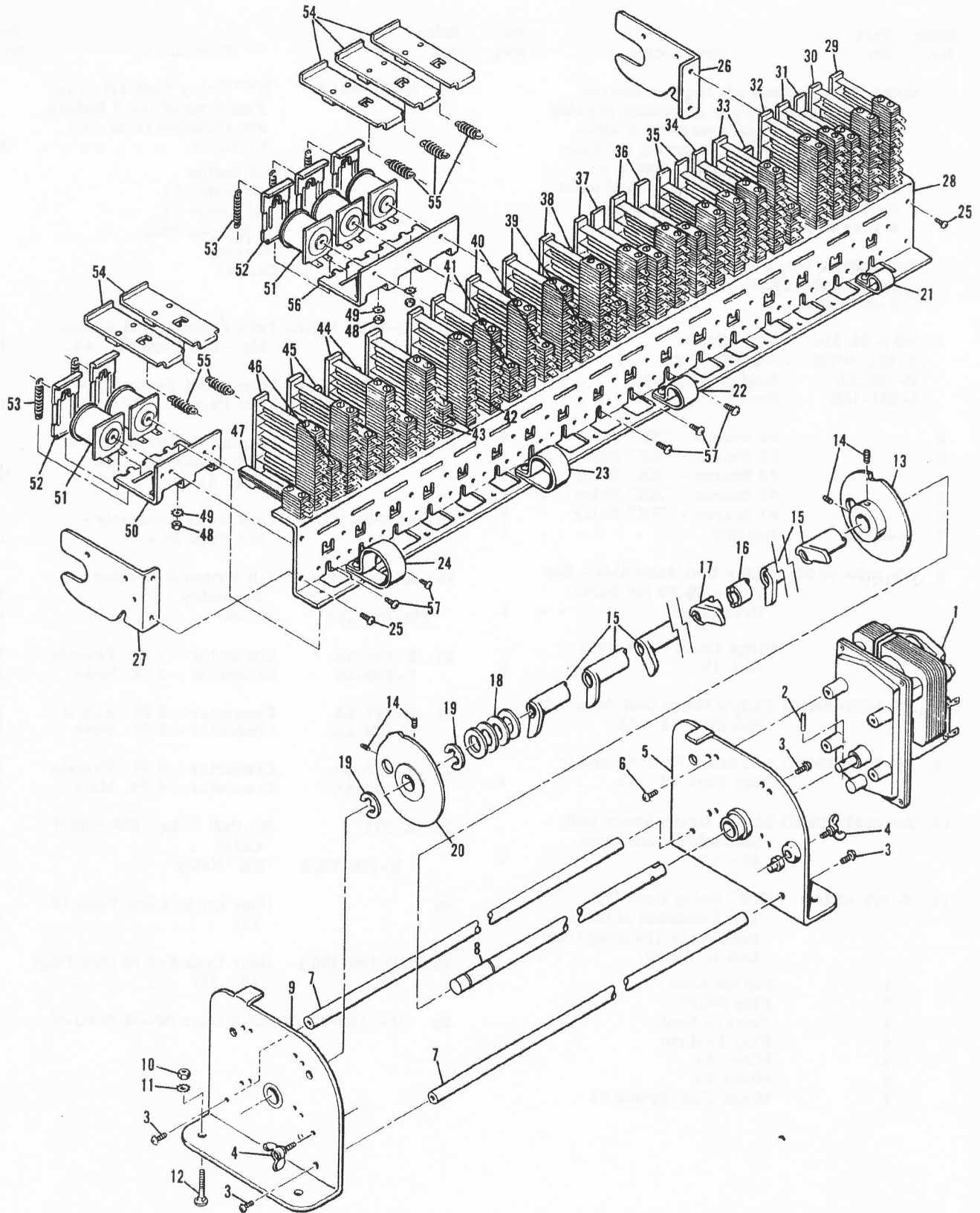
*Bally*

## UNIT LAYOUT & IDENTIFICATION

Index No.	Part No.	Description	No. Req.	Index No.	Part No.	Description	No. Req.
<p>Note: This Photograph shows a interior view of the Back Door Assembly showing the layout of the various units &amp; electrical systems. The following information provides a Page Index where a Parts Breakdown on the individual units can be found; plus Relay Functions, &amp; Play Adjustments.</p>				14	E-300-491A	"KK" Relay Bank (7) The Functions of the 7 Relays are (Reading from Left to Right): . . . . .	1
					1	Red Button	
					2	Red Letter #2	
					3	Red Letter #1	
					4	Up & Down Play	
					5	Steering	
					6	Cam #7	
					7	Z	
1	WS 8-24-510	Wood Screw . . . . .	2	15	AS-1022-108ND	Twin Feature Unit Assembly - See Page 42 - 43. . . . .	1
	P-801-107B	Washer (Top) . . . . .	2				
	R-100-3A	Rubber Bushing . . . . .	4	16	AS-1110-41ND	Timer Unit Assembly - See Page 42 - 43. . . . .	1
	S-231-15B	Bushing . . . . .	2				
2		#5 Search - "KK" Relay . . . . .	1	17	AS-823-47ND	Regular Features Reflex Unit Assembly - See Page 41. . . . .	1
3		#4 Search - "KK" Relay . . . . .	1				
4		#3 Search - "KK" Relay . . . . .	1	18	AS-240-12C	Trip Relay Assembly - See Page 36 - 37. . . . .	1
5		#2 Search - "KK" Relay . . . . .	1				
6		#1 Search - "KK" Relay . . . . .	1	19	AS-982-61A	Tilt Switch & Bracket Assembly . . . . .	1
7	P-4477B	Bracket . . . . .	1		SW-100-25A	Switch . . . . .	1
8	AS-1020-58ND	Mixer Unit Assembly - See Pages 38-40 for Parts Breakdown . . . . .	1	20	E-136-5A	Connector - 5 Pt. Female	1
9		Hinge Units - See Page 18 - 19. . . . .	2		E-140-3A	Connector - 3 Pt. Male . . . . .	1
10	AS-1022-106ND	Yellow Score Unit Assembly See Page 42 - 43. . . . .	1	21	E-137-6A	Connector - 6 Pt. Female	1
11	AS-1022-104ND	Red Score Unit Assembly See Page 42 - 43. . . . .	1		E-139-4A	Connector - 4 Pt. Male . . . . .	1
12	AS-1022-105ND	Blue & Green Score Unit Assembly - See Page 42 - 43. . . . .	1	22	E-136-8A	Connector - 8 Pt. Female	1
13	E-300-493A	"KK" Relay Bank (7) The Functions of the 7 Relays are (Reading from Left to Right): . . . . .	1		E-140-4A	Connector - 4 Pt. Male . . . . .	1
	1	Scores Lock		23	K-373	5th Ball Relay (868 Safari Only) . . . . .	1
	2	Play Score			E-146-720A	"KK" Relay . . . . .	1
	3	Feature Lock		24		Door Locks ( See Page 18 - 19) . . . . .	2
	4	Play Feature		25	SW-100-106A	Door Lock Switch (See Page 18 - 19) . . . . .	1
	5	Mixer #4		26	CA-1120-30ND	Back Door (Wood Portion) . . . . .	1
	6	Mixer #2					
	7	Mixer Cam Switch #2					

**ALWAYS GIVE MODEL AND PART NO. WHEN ORDERING SERVICE PARTS**

# TRIP RELAY ASSEMBLY



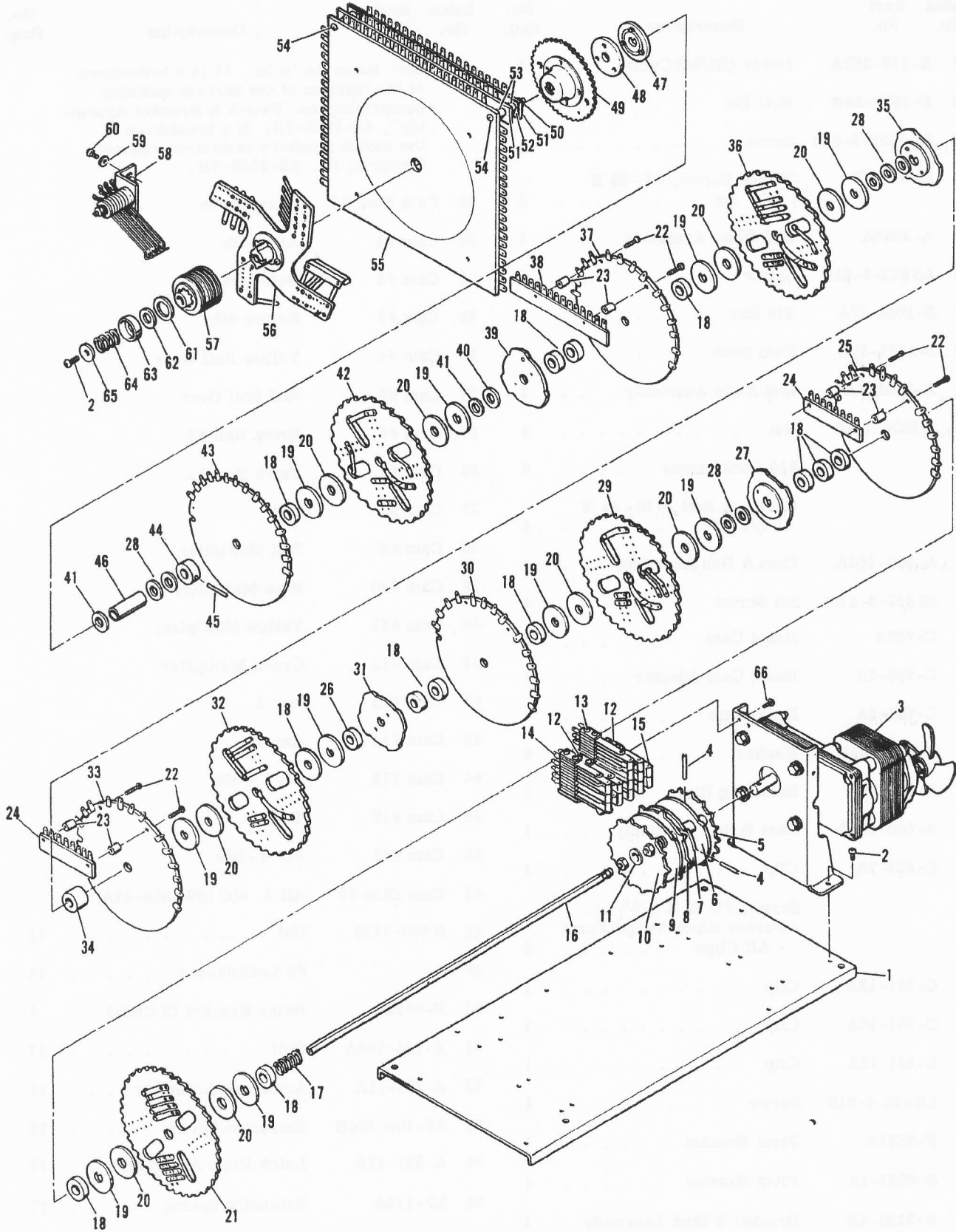
**ALWAYS GIVE MODEL AND PART NO. WHEN ORDERING SERVICE PARTS**

# TRIP RELAY ASSEMBLY



Index No.	Part No.	Description	No. Req.	Index No.	Part No.	Description	No. Req.
1	E-119-362A	Motor (50/60) Cycle	1	Note: Index No.'s 29 - 47 is a breakdown of the function of the various switches comprising the "Switch & Bracket Assembly", AS-2530-7B. If a breakdown of the switch numbers is desired request Blueprint No. AS-2530-7B.			
2	P-1637-58B	Roll Pin	1				
3	LS 1032-8-510	Screw	4				
4	M-961 NP	Thumb Screw, #8 - 32 X 1/4" Lg.	2				
5	A-3095A	End Plate Assembly	1	29	Cam Disc #1	Carry Over	
6	LS 832-6-510	Screw	4	30	Cam #1	After 5th	
7	S-1962-17A	Tie Bar	2	31	Cam #2	Before 5th	
8	S-1961-17B	Cam Shaft	1	32	Cam #3	Before 4th	
9	A-3095-1A	End Plate Assembly	1	33	Cam #4	Yellow Roll Over	
10	N 1024-1110	Nut	4	34	Cam #5	Red Roll Over	
11		#10 Lockwasher	4	35	Cam #6	Extra Ball #2	
12		Carriage Bolt, #10 - 24 X 1-1/8" Lg.	4	36	Cam #7	Extra Ball #1	
13	A-800-140A	Cam & Hub Assembly	1	37	Cam #8	Tilt	
14	SS 832-3-1101	Set Screw	4	38	Cam #9	Red Multiplier	
15	C-706A	Reset Cam	16	39	Cam #10	Blue Multiplier	
16	C-706-4A	Reset Cam Adapter	1	40	Cam #11	Yellow Multiplier	
17	C-706-5A	Reset Cam	1	41	Cam #12	Green Multiplier	
18	P-801-157B	Washer	4	42	Cam #13	Any 2	
19	P-2891-9A	Retaining Ring	2	43	Cam #14	Any 3	
20	A-800-151A	Cam & Hub Assembly	1	44	Cam #15	All 4 - 300	
21	C-281-7A	Clip	1	45	Cam #16	Triple	
		Screw, #8-32 X 3/8" Lg. Parker Kalon Swage Form - All Clips	3	46	Cam #17	All 4 - 600	
22	C-281-12A	Clip	1	47	Cam Disc #2	All 4 - 600 (SW-000-44A)	
23	C-281-16A	Clip	1	48	N 540-1110	Nut	11
24	C-281-18A	Clip	1	49		#5 Lockwasher	11
25	LS 832-4-510	Screw	4	50	P-6822A	Relay Bracket (2 Units)	1
26	P-6821A	Pivot Bracket	1	51	E-184-155A	Coil	17
27	P-6821-1A	Pivot Bracket	1	52	A-261-11A	Armature Assembly	17
28	A-3120-4B	Bracket & Stud Assembly	1	53	SP-100-164B	Extension Spring	17
				54	A-261-13A	Latch Plate Assembly	17
				55	SP-115A	Extension Spring	17
				56	P-6822-1A	Relay Bracket (3 Units)	5
				57	LS 832-8-511	Screw	17

# MIXER UNIT ASSEMBLY-PART I

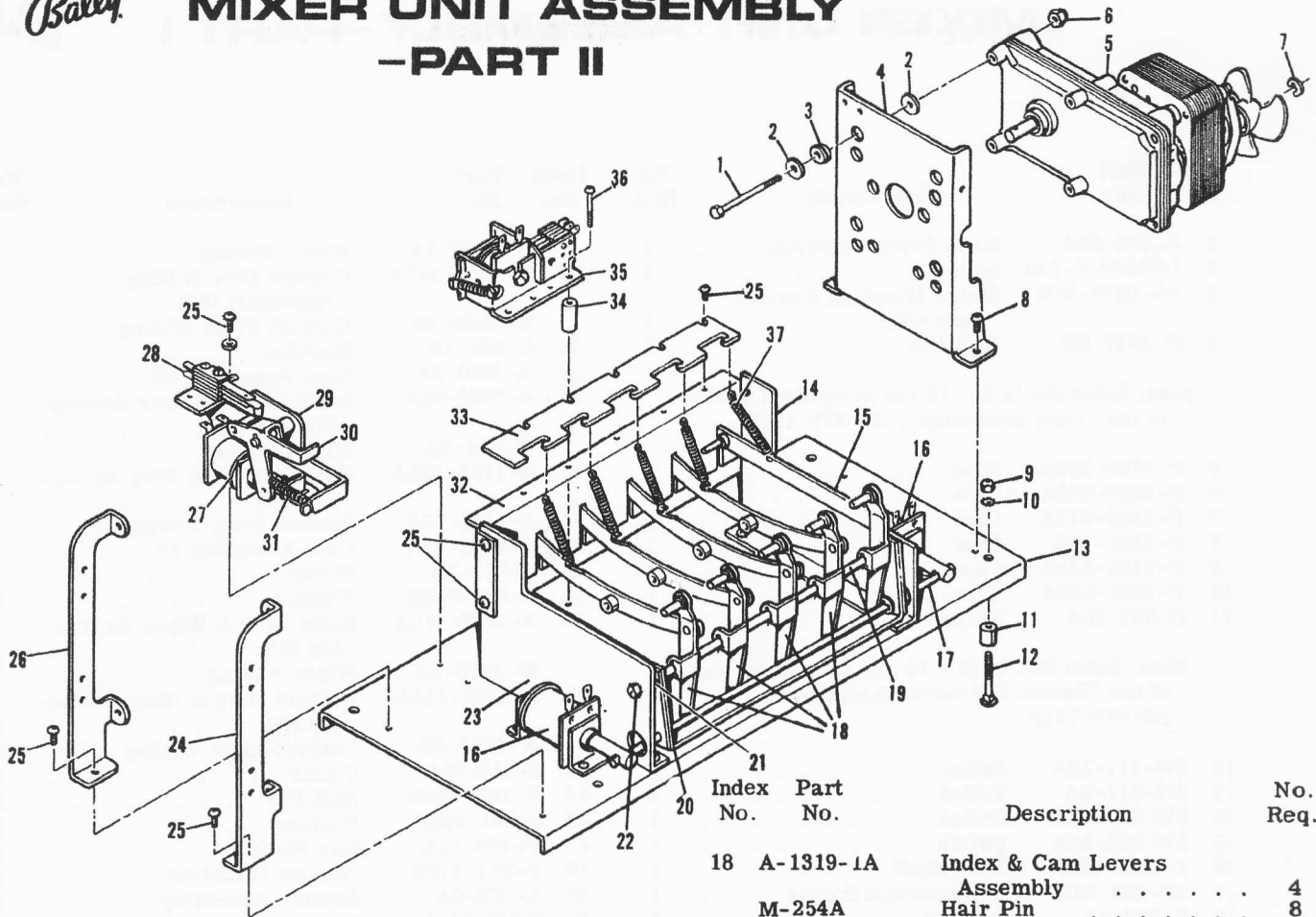


ALWAYS GIVE MODEL AND PART NO. WHEN ORDERING SERVICE PARTS





# MIXER UNIT ASSEMBLY -PART II



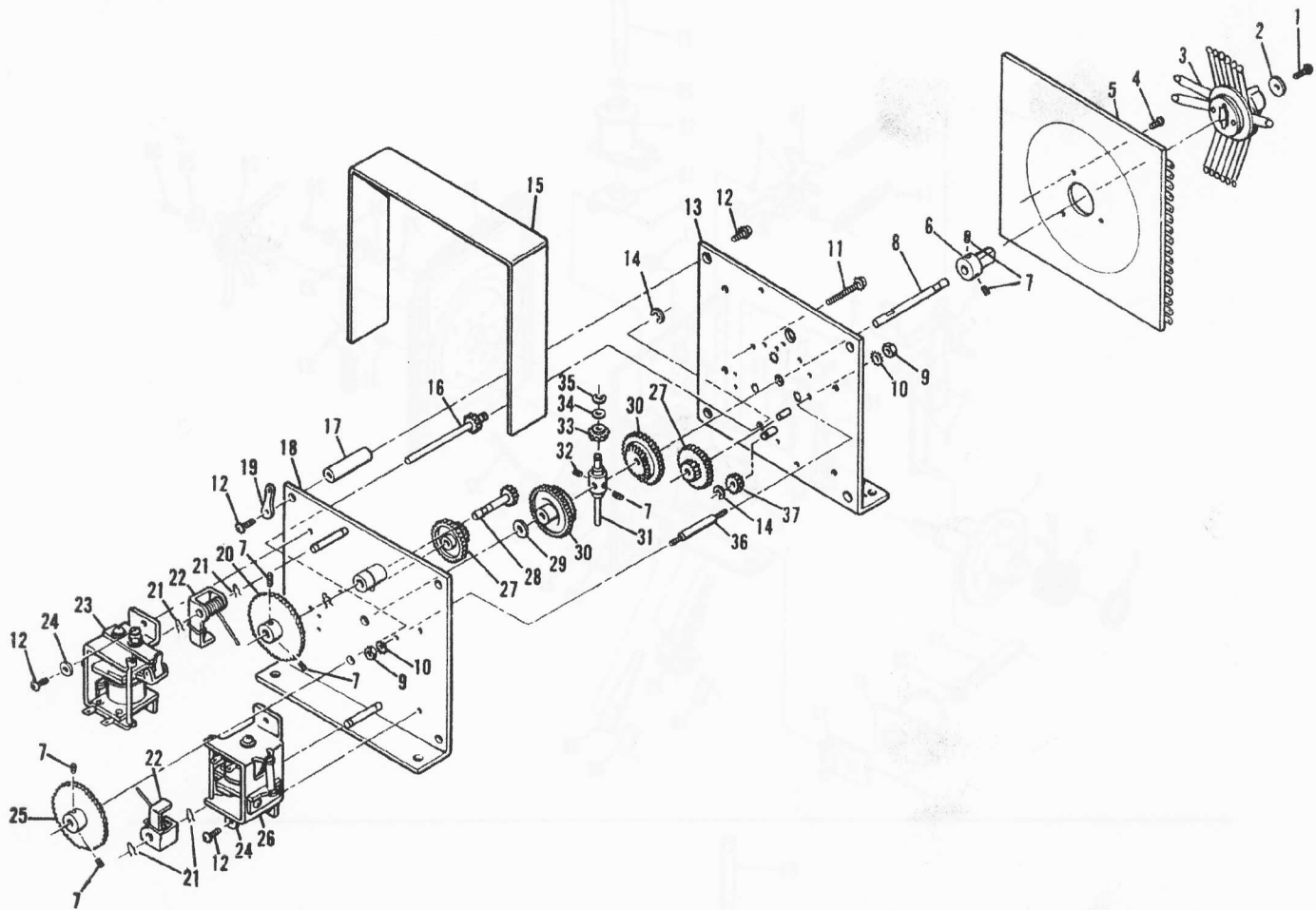
Index No.	Part No.	Description	No. Req.
1	S-1194-27A	Motor Mounting Stud	4
2	P-801-533B	Washer	8
3	R-111-29A	Grommet	4
4	P-2276-24B	Motor Mounting Bracket	1
5	E-119-359B	Motor - 115 V. - 50/60 Cycle	1
6	M-319-6A	Elastic Stop Nut	4
7	P-2891-6A	Retaining Ring	1
8	LS 1032-6-510	Screw	2
9	N 1024-1110	Nut	4
10		#10 Lockwasher	1
11	S-231-246B	Bushing	4
12		Carriage Bolt, #10-24 X 1 3/4" Lg.	4
13	A-473-69A	Base Plate Assembly	1
14	P-2306	End Plate - Right	1
15	LS 832-5-510	Screw	2
16	A-1319-2A	Lever & Slide Assembly	1
	M-254A	Hair Pin	2
17	E-184-237A	Coil	2
	P-1158-6A	Spring Washer	2
	P-108-42A	Solenoid Bracket	2
	MS 832-4-T11	Screw	4
	A-613-33A	Core Plug Assembly	2
	MS 832-4-T11	Screw	4
17	S-181-56A	Reset Rod	1
	P-6316-5A	Retaining Ring	2

Note: Index No.'s 1 - 7 are component parts of the "Motor Mounting Bracket Assembly", AS-1033-36B.

Index No.	Part No.	Description	No. Req.
18	A-1319-1A	Index & Cam Levers Assembly	4
	M-254A	Hair Pin	8
19	S-181-14A	Tie Rod	1
20	A-3122-1A	Reset Lever Assembly	1
	C-537-25A	Nyliner	2
21	S-231-717B	Bushing (Tie Rod)	2
22	LS 832-5-H.H.	Hex Hd. Screw	2
23	P-2306-8A	End Plate - Left	1
	LS 832-5-510	Screw	2
24	P-283-6B	Support Bracket	1
25	LS 832-5-510	Screw	17
26	P-282-11A	Support Bracket - Left	1
Note: Index No.'s 27 - 31 are component parts of the "Index Coil Assembly", AS-472-27A.			
27	E-184-41A	Coil	1
	A-613-83A	Core Plug Assembly	1
		Screw, #8 - 32 X 1/4" Lg. Parker Kalon Swage Form	2
	S-496-62A	Plunger	1
28	SW-200-5A	Switch	1
	P-137-5A	Spring Plate	1
	MS 540-10-110	Screw	2
29	A-1140-7A	Bracket & Hook Assembly	1
30	A-1138-7A	Index Arm Assembly	1
	M-254-2A	Hair Pin	1
31	SP-100-23B	Extension Spring	1
32	P-2297-1B	Bracket - Back	1
	LS 832-5-510	Screw	4
33	P-2792-5A	Index Plate	1
34	S-231-10B	Bushing	2
35	E-146-576A	"KK" Relay	1
36	LS 832-16-510	Screw	2
37	SP-100-9B	Extension Spring	5

# REGULAR FEATURES REFLEX UNIT

*Bally*



Index No.	Part No.	Description	No. Req.	Index No.	Part No.	Description	No. Req.
1		Hex. Hd. Screw, #10-32 X 3/8" Lg.	1	19	P-405-14A	Soldier Terminal	1
2	P-800-6B	Washer	1	20	A-463-20A	Ratchet Assembly #2 (64 Steps)	1
3	AS-1046-562A	Wiper Assembly	1	21	M-254-2A	Hair Pin	5
4	MS 632-4-610	Screw	3	22	P-138-4A	Pawl	2
5	A-101-330A	Contact Plate Assembly	1		SP-352A	Torsion Spring (Shown in Place)	2
6	W-891-7B	Contact Plate Wiring	1	23	AS-1060-1A	Magnet Assembly	1
7	S-149-29A	Adaptor	1	24	PW 8-10	Washer	4
8	SS-832-4-1104	Set Screw	7	25	A-463-18A	Ratchet Assembly (51 Steps)	1
9	S-4755-10A	Shaft	1	26	AS-1060A	Magnet Assembly	1
10	N 632-1110	Nut	2	27	C-155A	Gear	2
11	LS 832-14-510	#6 Lockwasher	2	28	A-1143A	Pinion & Shaft Assembly	1
12	LS 832-4-510	Screw (Stop)	1	29	P-801-30B	Washer	1
13	LS 832-4-510	Screw	12	30	C-231A	Gear (Bevel Spur)	2
14	A-1142-10B	Base Plate Assembly - Back	1	31	A-1146A	Stop Pin & Shaft Assembly	1
15	P-6316-3A	Retaining Ring	2	32	SS 832-4-1101	Set Screw	1
16	P-2073A	Shield	1	33	C-232A	Gear (Bevel)	1
17	A-1144A	Pinion Shaft Assembly	1	34	P-801-8B	Washer	1
18	S-423-40A	Spacer	1	35	P-6316-4A	Retaining Ring	1
	A-1142-5B	Back Plate Assembly (Front)	1	36	S-1256-9A	Tie Rod	1
				37	M-114A	Pinion	1

ALWAYS GIVE MODEL AND PART NO. WHEN ORDERING SERVICE PARTS

# BACK DOOR STEPPING UNITS

TIMER UNIT-TWIN FEATURES UNIT-YELLOW SCORE UNIT  
RED SCORE UNIT-BLUE & GREEN SCORE UNIT

